

Installation Guide for Passive Purple[®] External Brush



1. Area of use:

Passive Purple® External Brush is a ready-to-use coating, that after application with a paintbrush, dries to a durable, flexible, watertight, and damp-open membrane. For the use in building on :

- Gaps
- Joints
- Connections
- Service Penetrations
- Corner Junctions
- Formers & Reveals

2. System:

Passive Purple® External Brush is usually applied before the application of Passive Purple® External, on gaps, joints, connections, service penetrations, corner junctions. Passive Purple® External Brush, is applied on exposed facades as protective membrane and is best applied to blockwork, OSB & MGO board, concrete, masonry, plaster/render, engineered wooden boards, tapes, membranes, aluminum, steel, and PVC.

It is also an advanced fire-retardant membrane and a world leader in a new generation of environmentally sourced and produced liquid membrane solutions.

Passive Purple® External Brush had a class-Bs1 fire rating allowing it to self-extinguish when ignited giving little to no contribution to the reproduction of flames and a high contribution to building safety on all building types from small garden offices through to skyscrapers.



Board joints prepped for application of Passive Purple External.



Timber frame wall prepped with Passive Purple External Brush.

3. Materials and tools commonly needed:

- Stanley Knife, bag for waste.
- Masking tape.
- Vacuum cleaner (also for removing standing water).
- Non-shrink polyurethane foam and Passive Purple® External Brush.
- Airless pump + accessories + extension cord.
- Empty buckets, water for cleaning of tools.
- Handheld paddle mixer.
- Products: Passive Purple External, Passive Purple Brush, 3" paintbrush.
- Surface temperature meter, substrate must not be below 5°C.
- Personal safety equipment: Safety glasses, gloves, helmet, overalls, and masks.



Tools you will need.



Passive Purple External Brush.

4. Individual protection:

Consult the Materials Safety Data Sheet prior to application. Always work in well-ventilated areas. Avoid direct skin contact when product is in wet conditions. You are advised to wear eye protection, safety shoes overalls, mouth mask, gloves, and safety wear during application.



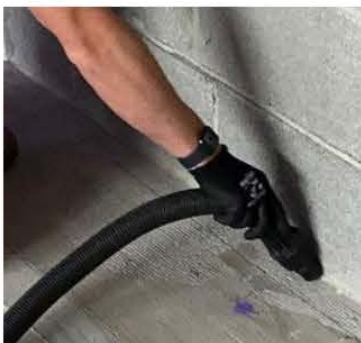
Gloves.



Goggles.

5. Inspection and preparation:

- Standing water, dust and free particles are removed with the vacuum cleaner. Passive Purple® External Brush may be applied to humid surfaces.
- Remove other types of surface pollutions that could diminish adhesion.
- Fill holes and joints over 7mm with a fast setting cement-based product or polyurethane foam.
- For joints where movements are expected during the lifetime of the construction, apply Passive Purple External Brush over the joint which will then later be overcoated with Passive Purple External.
- Apply Passive Purple External Brush to connections such as inbetween the wall and damp course or joints and penetrations on the OSB/MGO or blockwork.



Vacuum all debris.



Passive Purple External brush applied to timber frame wall connection before the application of Passive Purple External.

6.Application:

- Passive Purple® External Brush is ready-to-use; stir before use. Do not dilute with water or solvents.
- Apply with a flat paintbrush. Total advised indicative consumption : 0,5 - 1 kg/m².
- Clean paint brush and other tools with water.
- Avoid during the drying time, contact with any type of water, liquids or other construction product, during the drying process typically allow 24-48 hours to fully dry, (weather dependent).



Preparation work on a retrofit.



Timber frame install.



Helping hand brackets painted with Passive Purple External Brush.



Timber frame install.



Timber frame install.

7.Joining with other airtightness systems:

In case of doubt, consult the technical department of Intelligent Membranes®.

If an area to be sealed with Passive Purple® External Brush needs to be joined with another area where airtightness is achieved with engineered wooden boards with taped seams, any gap between the two areas needs to be treated as outlined in paragraph 4. If the joint is made between concrete or masonry structures and wooden framed walls or roofs that are subject to shrinking and other movements butyl tape should be provided before final application of Passive Purple® External Brush.

8. Quality Control:

- If required, check visually to ensure complete coverage; If needed, apply an additional coat.
- If required, thickness is verified with a wet film thickness gauge for each layer, to ensure minimum total coverage of 500 – 1000 microns.
- If required, this is how you use the wet film thickness gauge:
- Identify level and smooth patches of substrate.
- Select the appropriate side of the thickness gauge for thicknesses around 500 - 1000 microns.



- Remove gauge and inspect the underside of the comb fingers. The last wetted finger indicates the wet film thickness value printed by this finger.
- Repeat the measurements to make a reasonable number of spot checks. As a rule of thumb one measurement should be taken for each 5m² of coating.
- Clean gauge with water
- Press the appropriate side of the gauge into the wet film immediately after application.
- Thickness is verified with a wet film thickness gauge if necessary to ensure minimum total coverage of between 500-1000 microns. In general, when the substrate is not visible anymore, the coverage of between 500-1000 microns is more likely reached.
- Clean gauge with water.
- Lap onto adjoining areas.

9. Dont's

- Do not apply Passive Purple® External Brush on a polluted or dusty substrate.
- Do not dilute Passive Purple® External Brush with water or solvents; avoid contact with any type of liquid during drying.
- Do not leave the lid off the container for long periods, please re-seal immediately after use.
- Do not use a heat source at close range to aid drying.
- In case of damage to the Passive Purple External Brush® coating after drying, simply restore by cleaning the surface of the coating and re-applying an extra layer which is easily done with the brush version if it gets damaged when dry.
- Do not apply Passive Purple® External Brush the substate is under pressure: pressure testing must only be carried out once Passive Purple® External Brush is fully cured.

10. Storage:

Store all containers in a dry frost free environment between 5°C and 35°C, avoid direct sunlight or contact with a heat source.

Seal part used containers by pushing down firmly in the center of the lid when closing, ensure lid is closed tightly.

Do not use product from damaged or broken containers.

Shelf life: product will keep for 12 months from date of manufacture if kept according to these instructions in unopened containers. See batch number for date of production: ddmmyyxx (dd:day/mm:month/y:year/xx:productcode).

11. Disposal:

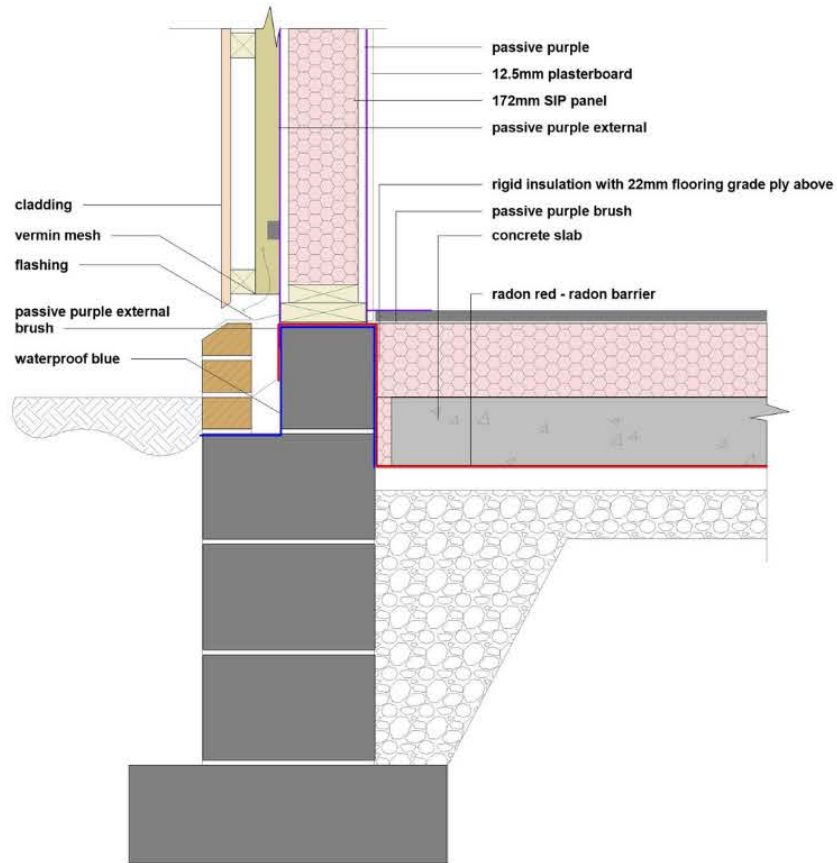
Please refer to product SDS information and EPD Certificate for details. Please recycle all used tubs.

12. Other areas of use:

Cavity Walls/Ceiling & Floor Connection :

Fill gaps bigger than 2mm with Passive Purple® External Brush. Do the same for joints, pipes, cables, ducting, and all other penetrations.

Always refer to the standard pack of details book.



Precautions:

Consult the Materials Safety Data Sheet and the material compatibility sheet prior to application. Always work in well-ventilated areas. Avoid direct skin contact when product is in wet condition. You are advised to wear eye protection, face mask, gloves, and safety wear during application.

Further advice:

This advice is based on the experience of the Intelligent Membranes® for further information, please contact our head office. Product sheets, safety data sheets and independent test reports are available on request.

Intelligent Membranes®

United Kingdom

Clopton Farm

Croydon

Cambridgeshire

SG8 0EF

INFO@INTELLIGENTMEMBRANES.CO.UK

WWW.INTELLIGENTMEMBRANES.COM

UK (+44) 01223 208174

Canada +1 (613) 927 1011

USA +1 (347) 220 8403