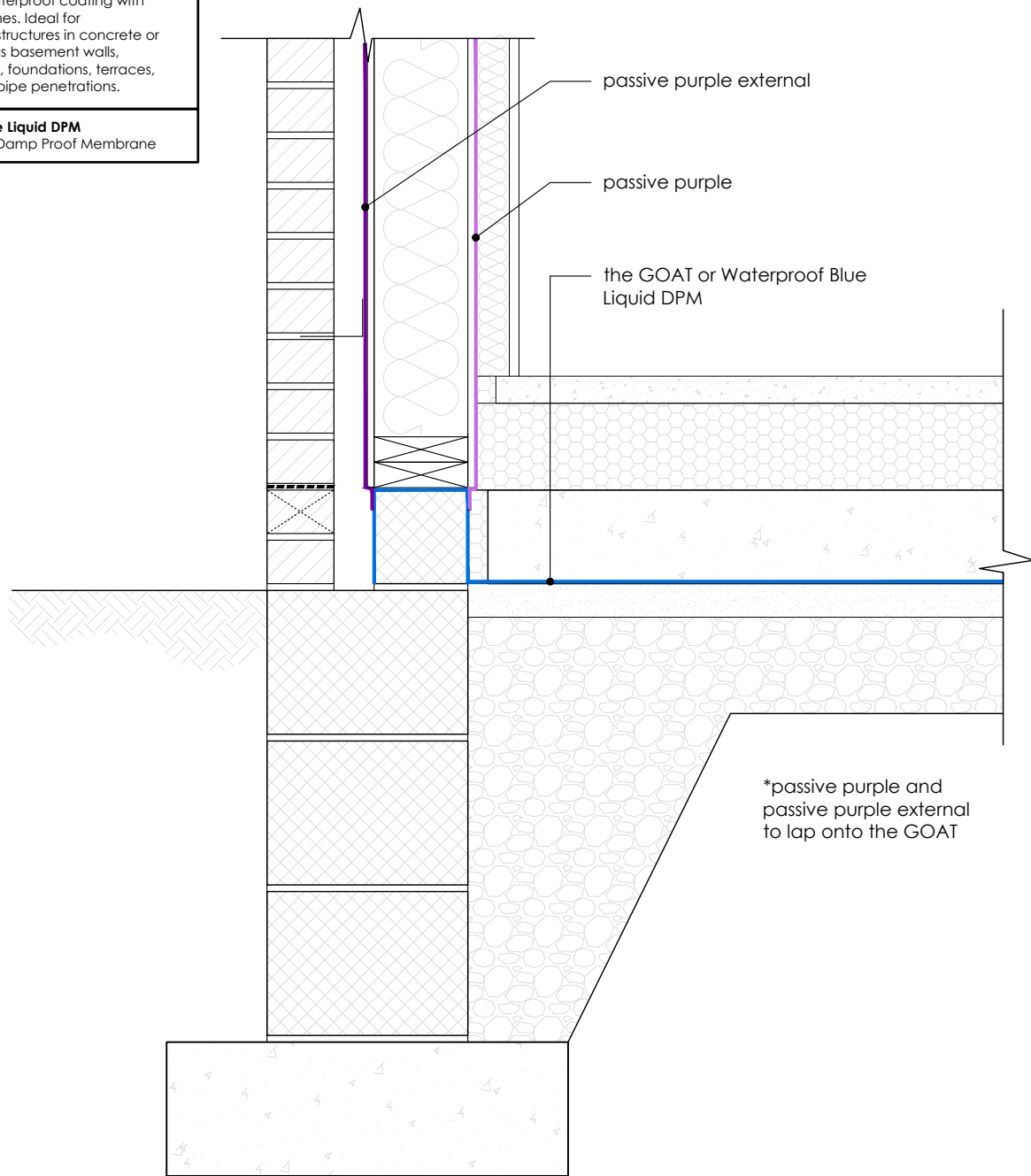


Passive Purple
Liquid applied internal airtight vapour control membrane

Passive Purple External
Liquid applied airtight vapour open facade waterproof membrane

the GOAT
Solvent-free waterproof coating with quick drying times. Ideal for waterproofing structures in concrete or masonry such as basement walls, basement roofs, foundations, terraces, balconies and pipe penetrations.

Waterproof Blue Liquid DPM
Liquid applied Damp Proof Membrane



INTELLIGENT MEMBRANES

Intelligent Membranes
Clopton Farm
Lower Road
Croydon
SG8 0EF
United Kingdom

tel: +44 (0)1223 080821

© Detail Library 2023

- Do not scale to ascertain dimensions.
- All dimensions to be checked and verified on site prior to commencement work.
- This detail is a guideline only, representing typical detailing conditions and illustrating the correct application of Intelligent Membranes products.
- It may be necessary to modify this detail to suit specific project design constraints and conditions.
- Refer to Intelligent Membranes specification for the product design action and method of application.
- These drawings are subject to the approval of all Statutory Building Control requirements and the requirements of all Statutory Authorities and Service Providers.
- These drawings are to be read in conjunction with product specifications and all other relevant documentation.
- All Intelligent Membranes products must lap on to another Intelligent Membranes product or other product to ensure airtightness and waterproofing.

Reference Number:

IM-T-G2

Scale:

1:10

Rev:

R0

Date:

JUN 23

Drawing Name:

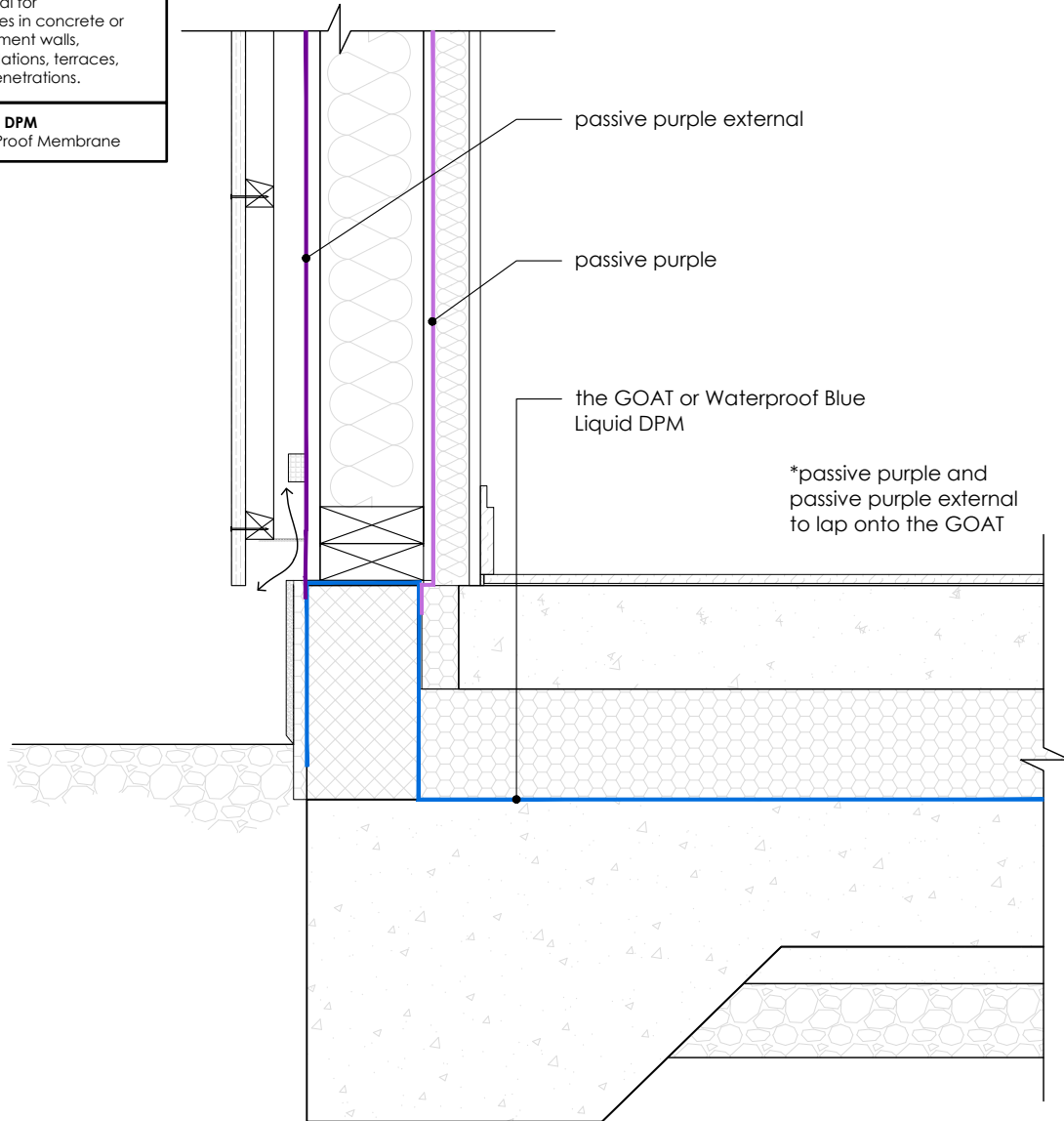
**Timber frame wall
Insulation above slab**

Passive Purple
Liquid applied internal airtight vapour control membrane

Passive Purple External
Liquid applied airtight vapour open facade waterproof membrane

the GOAT
Solvent-free waterproof coating with quick drying times. Ideal for waterproofing structures in concrete or masonry such as basement walls, basement roofs, foundations, terraces, balconies and pipe penetrations.

Waterproof Blue Liquid DPM
Liquid applied Damp Proof Membrane



INTELLIGENT MEMBRANES

Intelligent Membranes
Clopton Farm
Lower Road
Croydon
SG8 0EF
United Kingdom

tel: +44 (0)1223 080821

© Detail Library 2023

- Do not scale to ascertain dimensions.
- All dimensions to be checked and verified on site prior to commencement work.
- This detail is a guideline only, representing typical detailing conditions and illustrating the correct application of Intelligent Membranes products.
- It may be necessary to modify this detail to suit specific project design constraints and conditions.
- Refer to Intelligent Membranes specification for the product design action and method of application.
- These drawings are subject to the approval of all Statutory Building Control requirements and the requirements of all Statutory Authorities and Service Providers.
- These drawings are to be read in conjunction with product specifications and all other relevant documentation.
- All Intelligent Membranes products must lap on to another Intelligent Membranes product or other product to ensure airtightness and waterproofing.

Reference Number:

IM-T-G3

Scale:

1:10

Rev:

R0

Date:

JUN 23

Drawing Name:

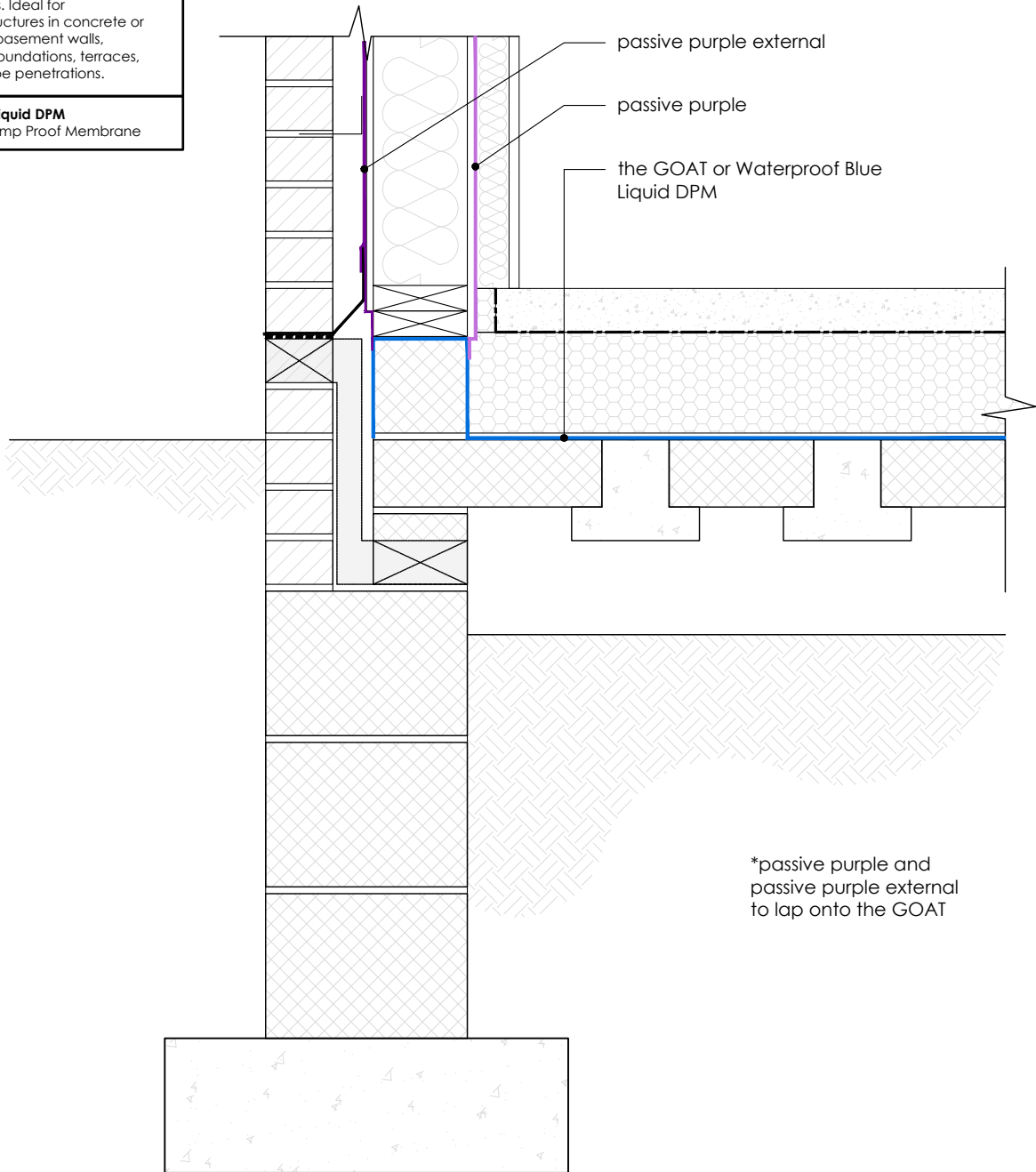
**Timber frame wall
Insulation above slab**

Passive Purple
Liquid applied internal airtight vapour control membrane

Passive Purple External
Liquid applied airtight vapour open facade waterproof membrane

the GOAT
Solvent-free waterproof coating with quick drying times. Ideal for waterproofing structures in concrete or masonry such as basement walls, basement roofs, foundations, terraces, balconies and pipe penetrations.

Waterproof Blue Liquid DPM
Liquid applied Damp Proof Membrane



*passive purple and passive purple external to lap onto the GOAT



INTELLIGENT MEMBRANES

Intelligent Membranes
Clopton Farm
Lower Road
Croydon
SG8 0EF
United Kingdom

tel: +44 (0)1223 080821

© Detail Library 2023

- Do not scale to ascertain dimensions.
- All dimensions to be checked and verified on site prior to commencement work.
- This detail is a guideline only, representing typical detailing conditions and illustrating the correct application of Intelligent Membranes products.
- It may be necessary to modify this detail to suit specific project design constraints and conditions.
- Refer to Intelligent Membranes specification for the product design action and method of application.
- These drawings are subject to the approval of all Statutory Building Control requirements and the requirements of all Statutory Authorities and Service Providers.
- These drawings are to be read in conjunction with product specifications and all other relevant documentation.
- All Intelligent Membranes products must lap on to another Intelligent Membranes product or other product to ensure airtightness and waterproofing.

Reference Number:

IM-T-G4

Scale:

1:10

Rev:

R0

Date:

JUN 23

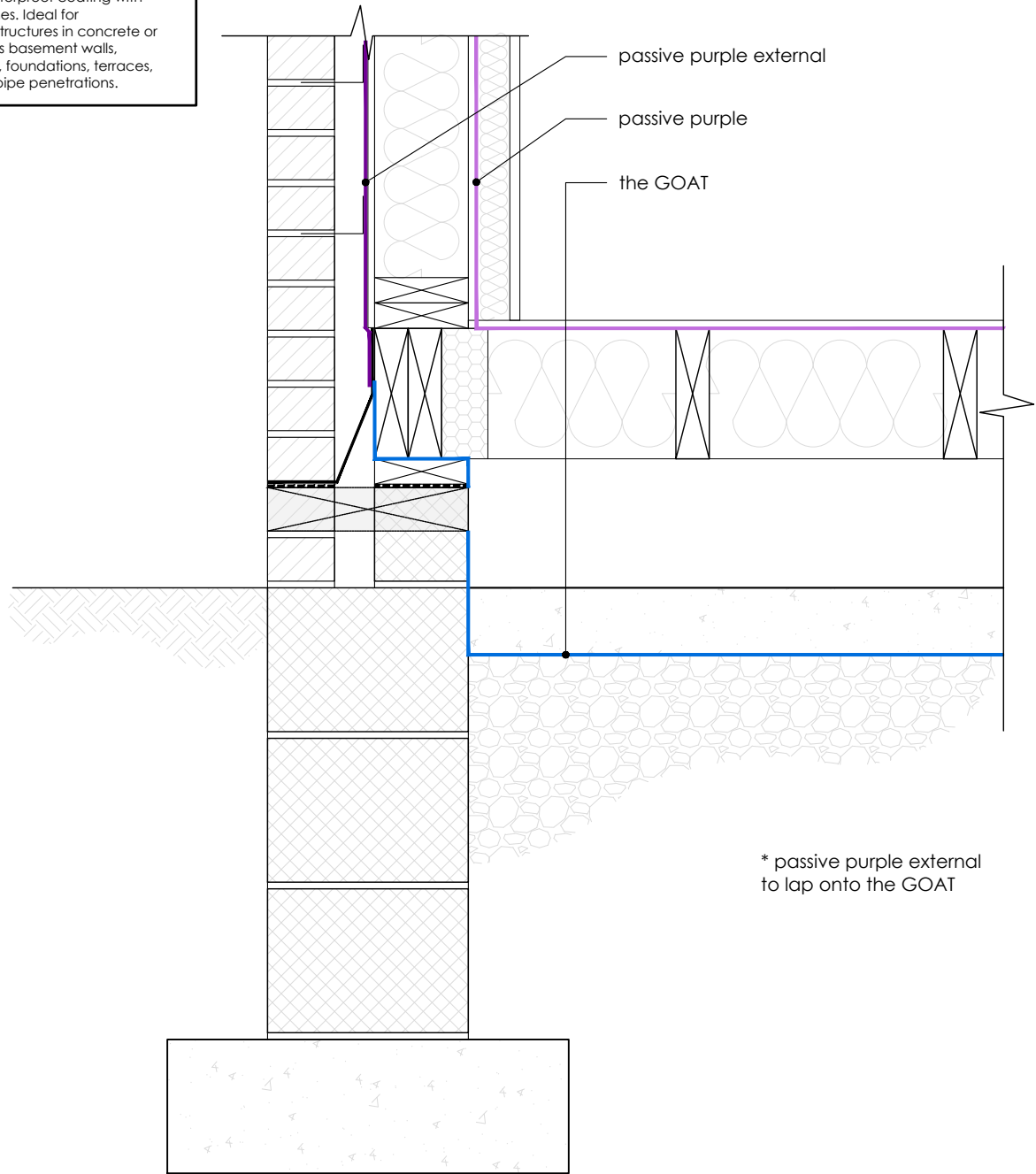
Drawing Name:

**Timber frame wall
Beam and block floor**

Passive Purple
Liquid applied internal airtight vapour control membrane

Passive Purple External
Liquid applied airtight vapour open facade waterproof membrane

the GOAT
Solvent-free waterproof coating with quick drying times. Ideal for waterproofing structures in concrete or masonry such as basement walls, basement roofs, foundations, terraces, balconies and pipe penetrations.



* passive purple external to lap onto the GOAT



INTELLIGENT MEMBRANES

Intelligent Membranes
Clopton Farm
Lower Road
Croydon
SG8 0EF
United Kingdom

tel: +44 (0)1223 080821

© Detail Library 2023

- Do not scale to ascertain dimensions.
- All dimensions to be checked and verified on site prior to commencement work.
- This detail is a guideline only, representing typical detailing conditions and illustrating the correct application of Intelligent Membranes products.
- It may be necessary to modify this detail to suit specific project design constraints and conditions.
- Refer to Intelligent Membranes specification for the product design action and method of application.
- These drawings are subject to the approval of all Statutory Building Control requirements and the requirements of all Statutory Authorities and Service Providers.
- These drawings are to be read in conjunction with product specifications and all other relevant documentation.
- All Intelligent Membranes products must lap on to another Intelligent Membranes product or other product to ensure airtightness and waterproofing.

Reference Number:

IM-T-G5

Scale:

1:10

Rev:

R0

Date:

JUN 23

Drawing Name:

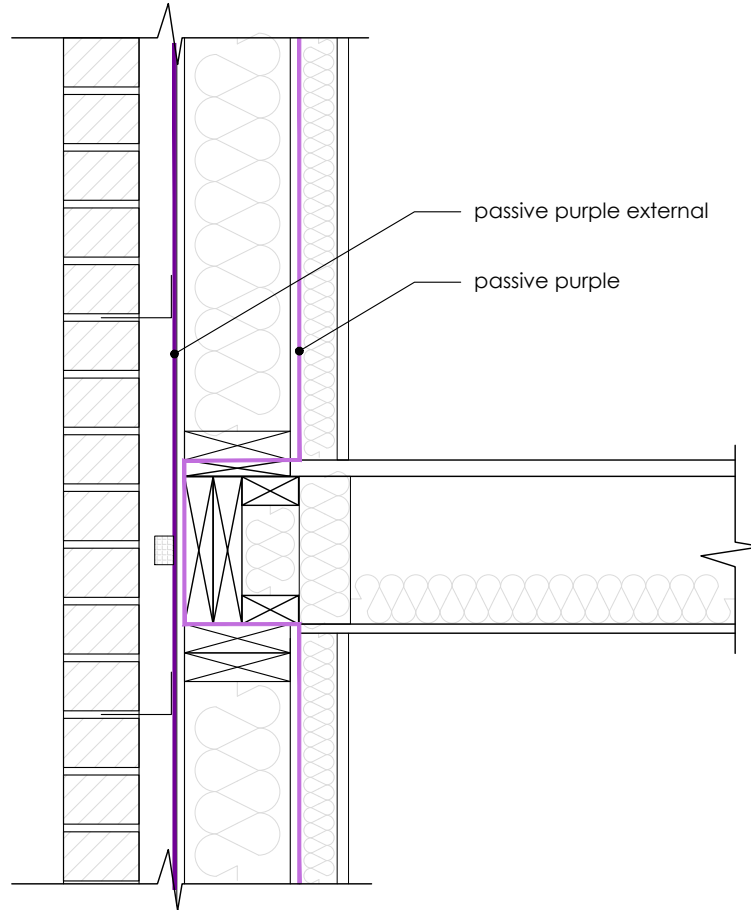
**Timber frame wall
Suspended timber floor
(Extensions only)**

Passive Purple

Liquid applied internal airtight vapour control membrane

Passive Purple External

Liquid applied airtight vapour open facade waterproof membrane

**INTELLIGENT MEMBRANES**

Intelligent Membranes
 Clopton Farm
 Lower Road
 Croydon
 SG8 0EF
 United Kingdom

tel: +44 (0)1223 080821

© Detail Library 2023

- Do not scale to ascertain dimensions.
- All dimensions to be checked and verified on site prior to commencement work.
- This detail is a guideline only, representing typical detailing conditions and illustrating the correct application of Intelligent Membranes products.
- It may be necessary to modify this detail to suit specific project design constraints and conditions.
- Refer to Intelligent Membranes specification for the product design action and method of application.
- These drawings are subject to the approval of all Statutory Building Control requirements and the requirements of all Statutory Authorities and Service Providers.
- These drawings are to be read in conjunction with product specifications and all other relevant documentation.
- All Intelligent Membranes products must lap on to another Intelligent Membranes product or other product to ensure airtightness and waterproofing.

Reference Number:

IM-T-G6

Scale:

1:10

Rev:

R0

Date:

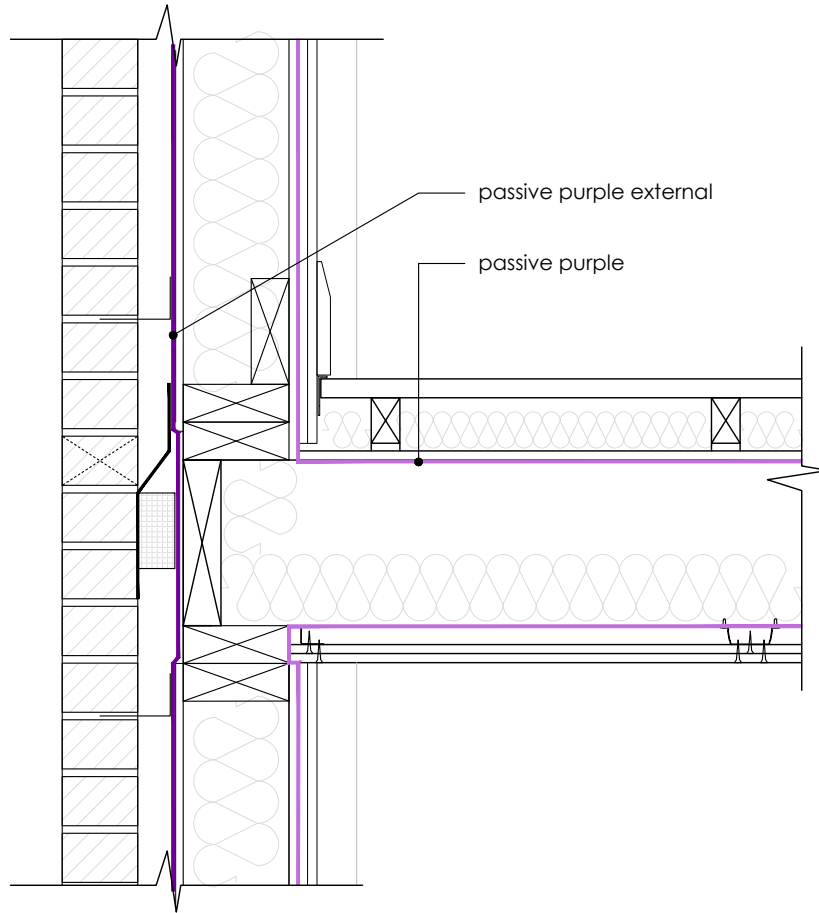
JUN 23

Drawing Name:

**Timber frame wall
 Intermediate floor**

Passive Purple
Liquid applied internal airtight vapour control membrane

Passive Purple External
Liquid applied airtight vapour open facade waterproof membrane



INTELLIGENT MEMBRANES

Intelligent Membranes
Clopton Farm
Lower Road
Croydon
SG8 0EF
United Kingdom

tel: +44 (0)1223 080821

© Detail Library 2023

- Do not scale to ascertain dimensions.
- All dimensions to be checked and verified on site prior to commencement work.
- This detail is a guideline only, representing typical detailing conditions and illustrating the correct application of Intelligent Membranes products.
- It may be necessary to modify this detail to suit specific project design constraints and conditions.
- Refer to Intelligent Membranes specification for the product design action and method of application.
- These drawings are subject to the approval of all Statutory Building Control requirements and the requirements of all Statutory Authorities and Service Providers.
- These drawings are to be read in conjunction with product specifications and all other relevant documentation.
- All Intelligent Membranes products must lap on to another Intelligent Membranes product or other product to ensure airtightness and waterproofing.

Reference Number:

IM-T-G7

Scale:

1:10

Rev:

R0

Date:

JUN 23

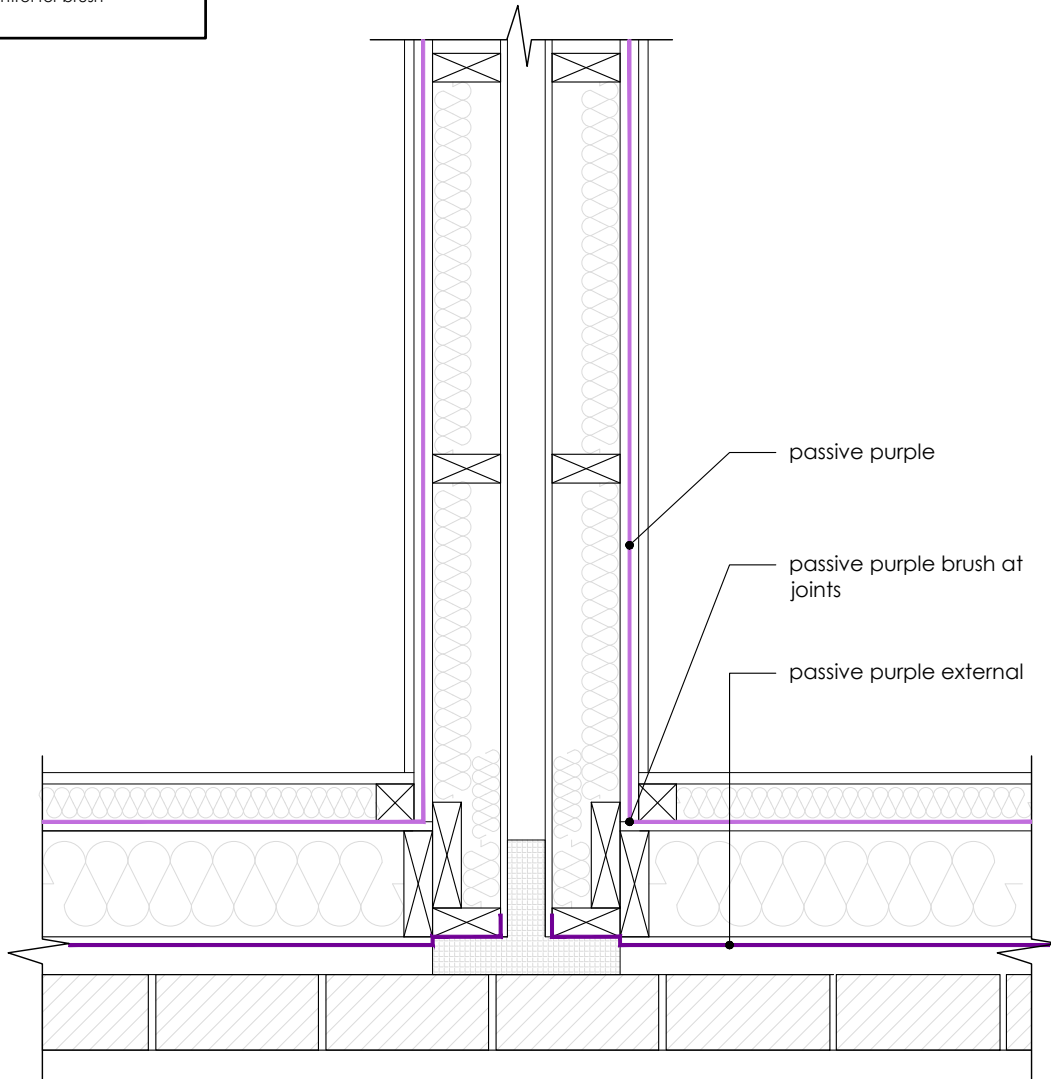
Drawing Name:

**Timber frame wall
Timber floor**

Passive Purple
Liquid applied internal airtight vapour control membrane

Passive Purple External
Liquid applied airtight vapour open facade waterproof membrane

Passive Purple Brush
Ready to use liquid applied internal airtight vapour control for brush application



passive purple

passive purple brush at joints

passive purple external



INTELLIGENT MEMBRANES

Intelligent Membranes
Clopton Farm
Lower Road
Croydon
SG8 0EF
United Kingdom

tel: +44 (0)1223 080821

© Detail Library 2023

- Do not scale to ascertain dimensions.
- All dimensions to be checked and verified on site prior to commencement work.
- This detail is a guideline only, representing typical detailing conditions and illustrating the correct application of Intelligent Membranes products.
- It may be necessary to modify this detail to suit specific project design constraints and conditions.
- Refer to Intelligent Membranes specification for the product design action and method of application.
- These drawings are subject to the approval of all Statutory Building Control requirements and the requirements of all Statutory Authorities and Service Providers.
- These drawings are to be read in conjunction with product specifications and all other relevant documentation.
- All Intelligent Membranes products must lap on to another Intelligent Membranes product or other product to ensure airtightness and waterproofing.

Reference Number:

IM-T-W6

Scale:

1:10

Rev:

R0

Date:

JUN 23

Drawing Name:

**Timber frame
Party wall**

Passive Purple

Liquid applied internal airtight vapour control membrane

Passive Purple External

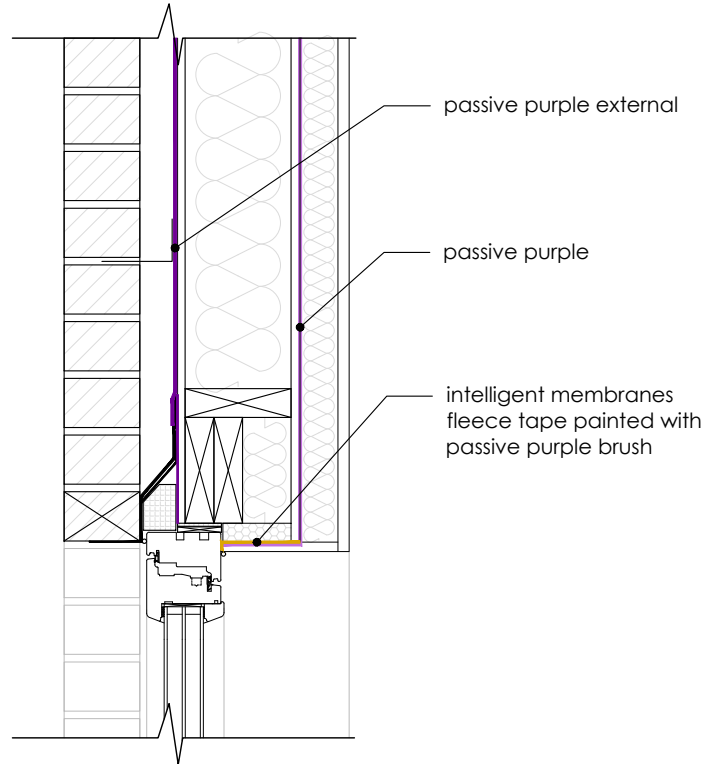
Liquid applied airtight vapour open facade waterproof membrane

Intelligent Membranes Fleece Tape

Airtightness tape for windows and connecting joints

Passive Purple Brush

Ready to use liquid applied internal airtight vapour control for brush application



INTELLIGENT MEMBRANES

Intelligent Membranes
Clopton Farm
Lower Road
Croydon
SG8 0EF
United Kingdom

tel: +44 (0)1223 080821

© Detail Library 2023

- Do not scale to ascertain dimensions.
- All dimensions to be checked and verified on site prior to commencement work.
- This detail is a guideline only, representing typical detailing conditions and illustrating the correct application of Intelligent Membranes products.
- It may be necessary to modify this detail to suit specific project design constraints and conditions.
- Refer to Intelligent Membranes specification for the product design action and method of application.
- These drawings are subject to the approval of all Statutory Building Control requirements and the requirements of all Statutory Authorities and Service Providers.
- These drawings are to be read in conjunction with product specifications and all other relevant documentation.
- All Intelligent Membranes products must lap on to another Intelligent Membranes product or other product to ensure airtightness and waterproofing.

Reference Number:

IM-T-W7

Scale:

1:10

Rev:

R0

Date:

JUN 23

Drawing Name:

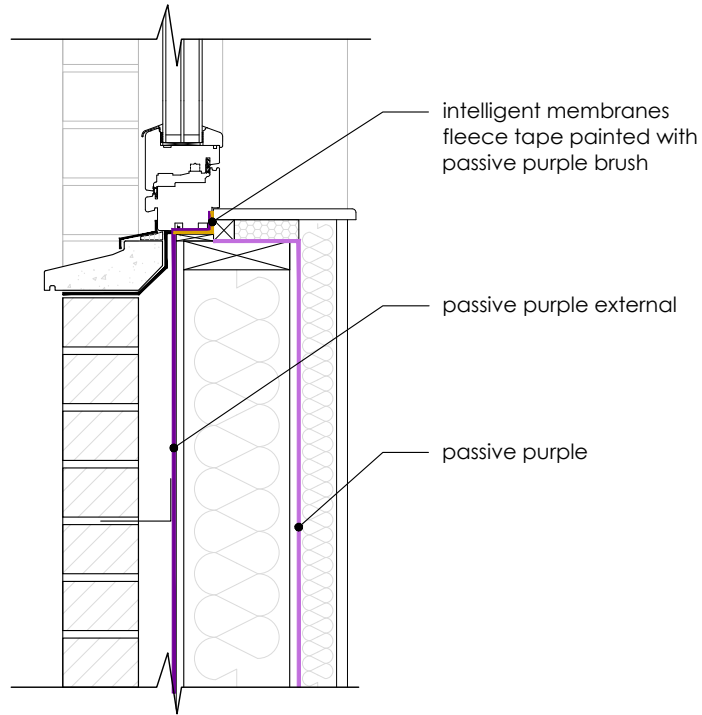
**Timber frame wall
Window head (section)**

Passive Purple
Liquid applied internal airtight vapour control membrane

Passive Purple External
Liquid applied airtight vapour open facade waterproof membrane

Intelligent Membranes Fleece Tape
Airtightness tape for windows and connecting joints

Passive Purple Brush
Ready to use liquid applied internal airtight vapour control for brush application



INTELLIGENT MEMBRANES

Intelligent Membranes
Clopton Farm
Lower Road
Croydon
SG8 0EF
United Kingdom

tel: +44 (0)1223 080821

© Detail Library 2023

- Do not scale to ascertain dimensions.
- All dimensions to be checked and verified on site prior to commencement work.
- This detail is a guideline only, representing typical detailing conditions and illustrating the correct application of Intelligent Membranes products.
- It may be necessary to modify this detail to suit specific project design constraints and conditions.
- Refer to Intelligent Membranes specification for the product design action and method of application.
- These drawings are subject to the approval of all Statutory Building Control requirements and the requirements of all Statutory Authorities and Service Providers.
- These drawings are to be read in conjunction with product specifications and all other relevant documentation.
- All Intelligent Membranes products must lap on to another Intelligent Membranes product or other product to ensure airtightness and waterproofing.

Reference Number:

IM-T-W8

Scale:

1:10

Rev:

R0

Date:

JUN 23

Drawing Name:

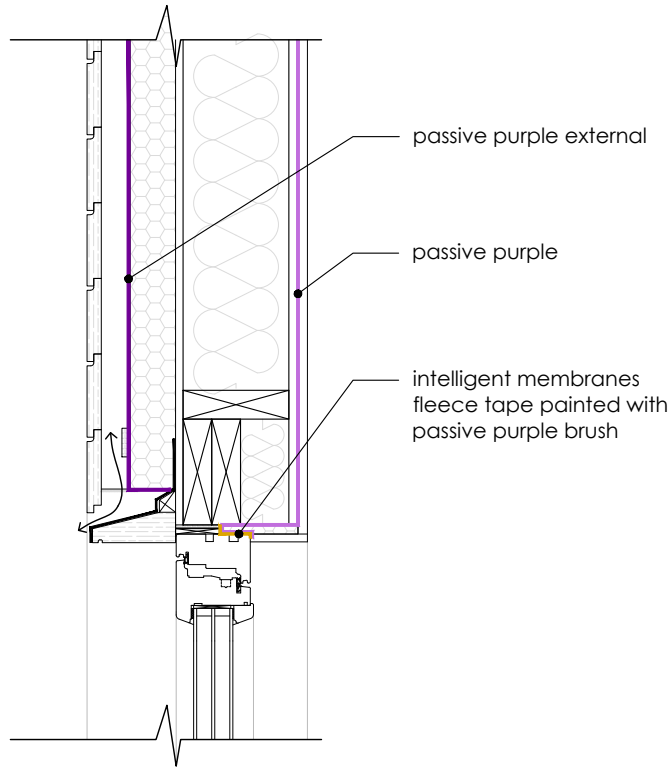
**Timber frame wall
Window cill (section)**

Passive Purple
Liquid applied internal airtight vapour control membrane

Passive Purple External
Liquid applied airtight vapour open facade waterproof membrane

Intelligent Membranes Fleece Tape
Airtightness tape for windows and connecting joints

Passive Purple Brush
Ready to use liquid applied internal airtight vapour control for brush application



INTELLIGENT MEMBRANES

Intelligent Membranes
Clopton Farm
Lower Road
Croydon
SG8 0EF
United Kingdom

tel: +44 (0)1223 080821

© Detail Library 2023

- Do not scale to ascertain dimensions.
- All dimensions to be checked and verified on site prior to commencement work.
- This detail is a guideline only, representing typical detailing conditions and illustrating the correct application of Intelligent Membranes products.
- It may be necessary to modify this detail to suit specific project design constraints and conditions.
- Refer to Intelligent Membranes specification for the product design action and method of application.
- These drawings are subject to the approval of all Statutory Building Control requirements and the requirements of all Statutory Authorities and Service Providers.
- These drawings are to be read in conjunction with product specifications and all other relevant documentation.
- All Intelligent Membranes products must lap on to another Intelligent Membranes product or other product to ensure airtightness and waterproofing.

Reference Number:

IM-T-W13

Scale:

1:10

Rev:

R0

Date:

JUN 23

Drawing Name:

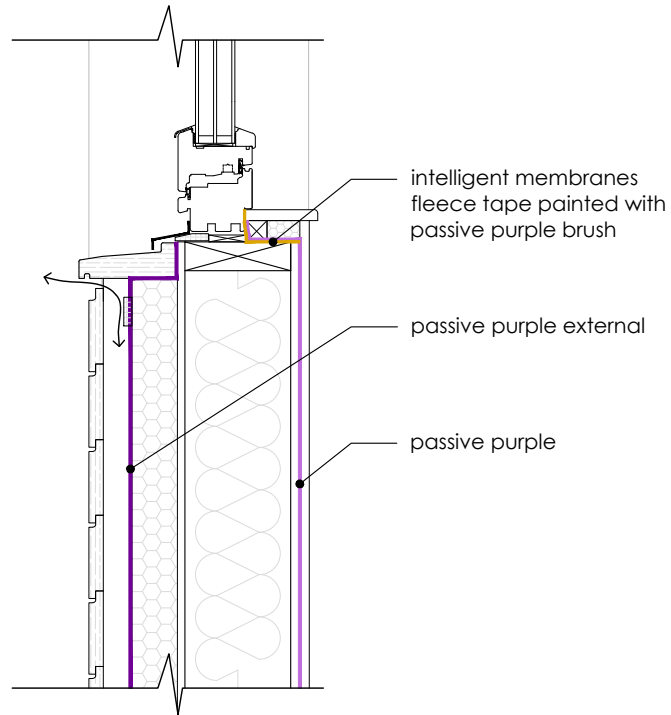
**Timber frame wall
Window head (section)**

Passive Purple
Liquid applied internal airtight vapour control membrane

Passive Purple External
Liquid applied airtight vapour open facade waterproof membrane

Intelligent Membranes Fleece Tape
Airtightness tape for windows and connecting joints

Passive Purple Brush
Ready to use liquid applied internal airtight vapour control for brush application



INTELLIGENT MEMBRANES

Intelligent Membranes
Clopton Farm
Lower Road
Croydon
SG8 0EF
United Kingdom

tel: +44 (0)1223 080821

© Detail Library 2023

- Do not scale to ascertain dimensions.
- All dimensions to be checked and verified on site prior to commencement work.
- This detail is a guideline only, representing typical detailing conditions and illustrating the correct application of Intelligent Membranes products.
- It may be necessary to modify this detail to suit specific project design constraints and conditions.
- Refer to Intelligent Membranes specification for the product design action and method of application.
- These drawings are subject to the approval of all Statutory Building Control requirements and the requirements of all Statutory Authorities and Service Providers.
- These drawings are to be read in conjunction with product specifications and all other relevant documentation.
- All Intelligent Membranes products must lap on to another Intelligent Membranes product or other product to ensure airtightness and waterproofing.

Reference Number:

IM-T-W14

Scale:

1:10

Rev:

R0

Date:

JUN 23

Drawing Name:

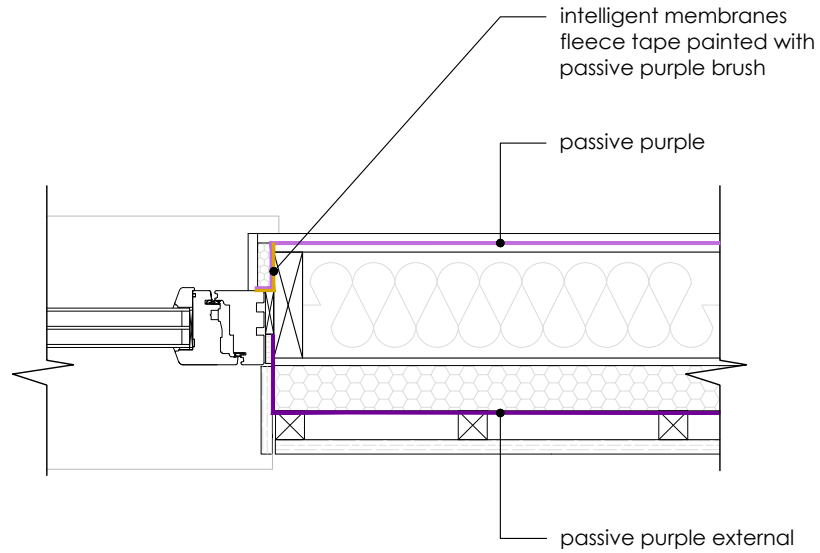
**Timber frame wall
Window cill (section)**

Passive Purple
Liquid applied internal airtight vapour control membrane

Passive Purple External
Liquid applied airtight vapour open facade waterproof membrane

Intelligent Membranes Fleece Tape
Airtightness tape for windows and connecting joints

Passive Purple Brush
Ready to use liquid applied internal airtight vapour control for brush application



INTELLIGENT MEMBRANES

Intelligent Membranes
Clopton Farm
Lower Road
Croydon
SG8 0EF
United Kingdom

tel: +44 (0)1223 080821

© Detail Library 2023

- Do not scale to ascertain dimensions.
- All dimensions to be checked and verified on site prior to commencement work.
- This detail is a guideline only, representing typical detailing conditions and illustrating the correct application of Intelligent Membranes products.
- It may be necessary to modify this detail to suit specific project design constraints and conditions.
- Refer to Intelligent Membranes specification for the product design action and method of application.
- These drawings are subject to the approval of all Statutory Building Control requirements and the requirements of all Statutory Authorities and Service Providers.
- These drawings are to be read in conjunction with product specifications and all other relevant documentation.
- All Intelligent Membranes products must lap on to another Intelligent Membranes product or other product to ensure airtightness and waterproofing.

Reference Number:

IM-T-W15

Scale:

1:10

Rev:

R0

Date:

JUN 23

Drawing Name:

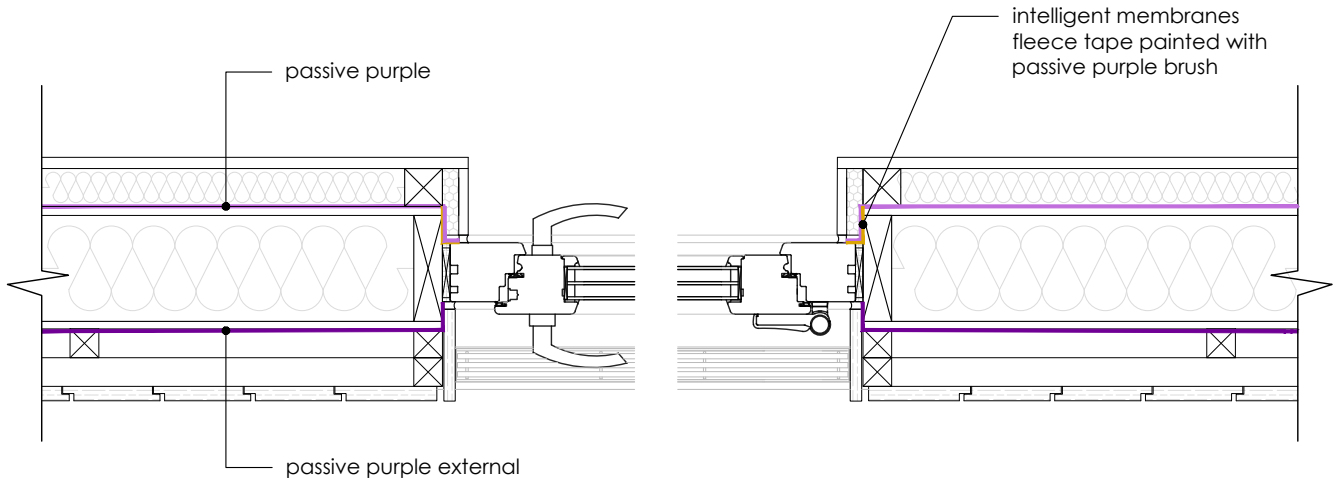
**Timber frame wall
Window jamb (plan)**

Passive Purple
Liquid applied internal airtight vapour control membrane

Passive Purple External
Liquid applied airtight vapour open facade waterproof membrane

Intelligent Membranes Fleece Tape
Airtightness tape for windows and connecting joints

Passive Purple Brush
Ready to use liquid applied internal airtight vapour control for brush application



INTELLIGENT MEMBRANES

Intelligent Membranes
Clopton Farm
Lower Road
Croydon
SG8 0EF
United Kingdom

tel: +44 (0)1223 080821

© Detail Library 2023

- Do not scale to ascertain dimensions.
- All dimensions to be checked and verified on site prior to commencement work.
- This detail is a guideline only, representing typical detailing conditions and illustrating the correct application of Intelligent Membranes products.
- It may be necessary to modify this detail to suit specific project design constraints and conditions.
- Refer to Intelligent Membranes specification for the product design action and method of application.
- These drawings are subject to the approval of all Statutory Building Control requirements and the requirements of all Statutory Authorities and Service Providers.
- These drawings are to be read in conjunction with product specifications and all other relevant documentation.
- All Intelligent Membranes products must lap on to another Intelligent Membranes product or other product to ensure airtightness and waterproofing.

Reference Number:

IM-T-W19

Scale:

1:10

Rev:

R0

Date:

JUN 23

Drawing Name:

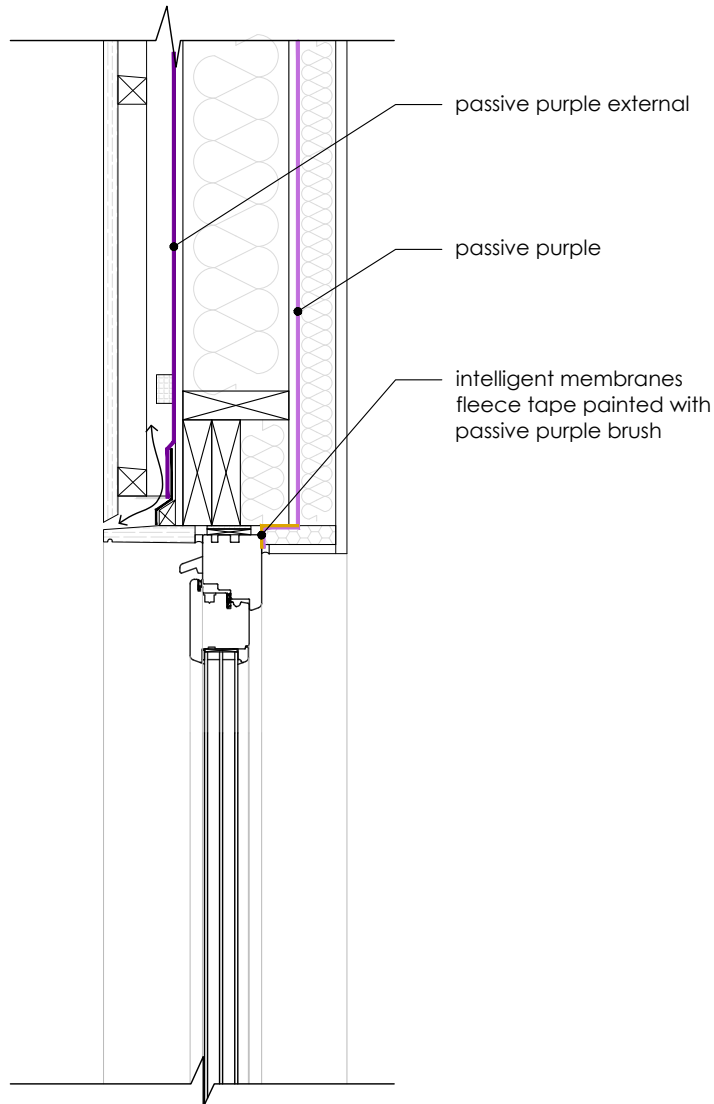
**Timber frame wall
Door jamb (plan)**

Passive Purple
Liquid applied internal airtight vapour control membrane

Passive Purple External
Liquid applied airtight vapour open facade waterproof membrane

Intelligent Membranes Fleece Tape
Airtightness tape for windows and connecting joints

Passive Purple Brush
Ready to use liquid applied internal airtight vapour control for brush application



INTELLIGENT MEMBRANES

Intelligent Membranes
Clopton Farm
Lower Road
Croydon
SG8 0EF
United Kingdom

tel: +44 (0)1223 080821

© Detail Library 2023

- Do not scale to ascertain dimensions.
- All dimensions to be checked and verified on site prior to commencement work.
- This detail is a guideline only, representing typical detailing conditions and illustrating the correct application of Intelligent Membranes products.
- It may be necessary to modify this detail to suit specific project design constraints and conditions.
- Refer to Intelligent Membranes specification for the product design action and method of application.
- These drawings are subject to the approval of all Statutory Building Control requirements and the requirements of all Statutory Authorities and Service Providers.
- These drawings are to be read in conjunction with product specifications and all other relevant documentation.
- All Intelligent Membranes products must lap on to another Intelligent Membranes product or other product to ensure airtightness and waterproofing.

Reference Number:

IM-T-W20

Scale:

1:10

Rev:

R0

Date:

JUN 23

Drawing Name:

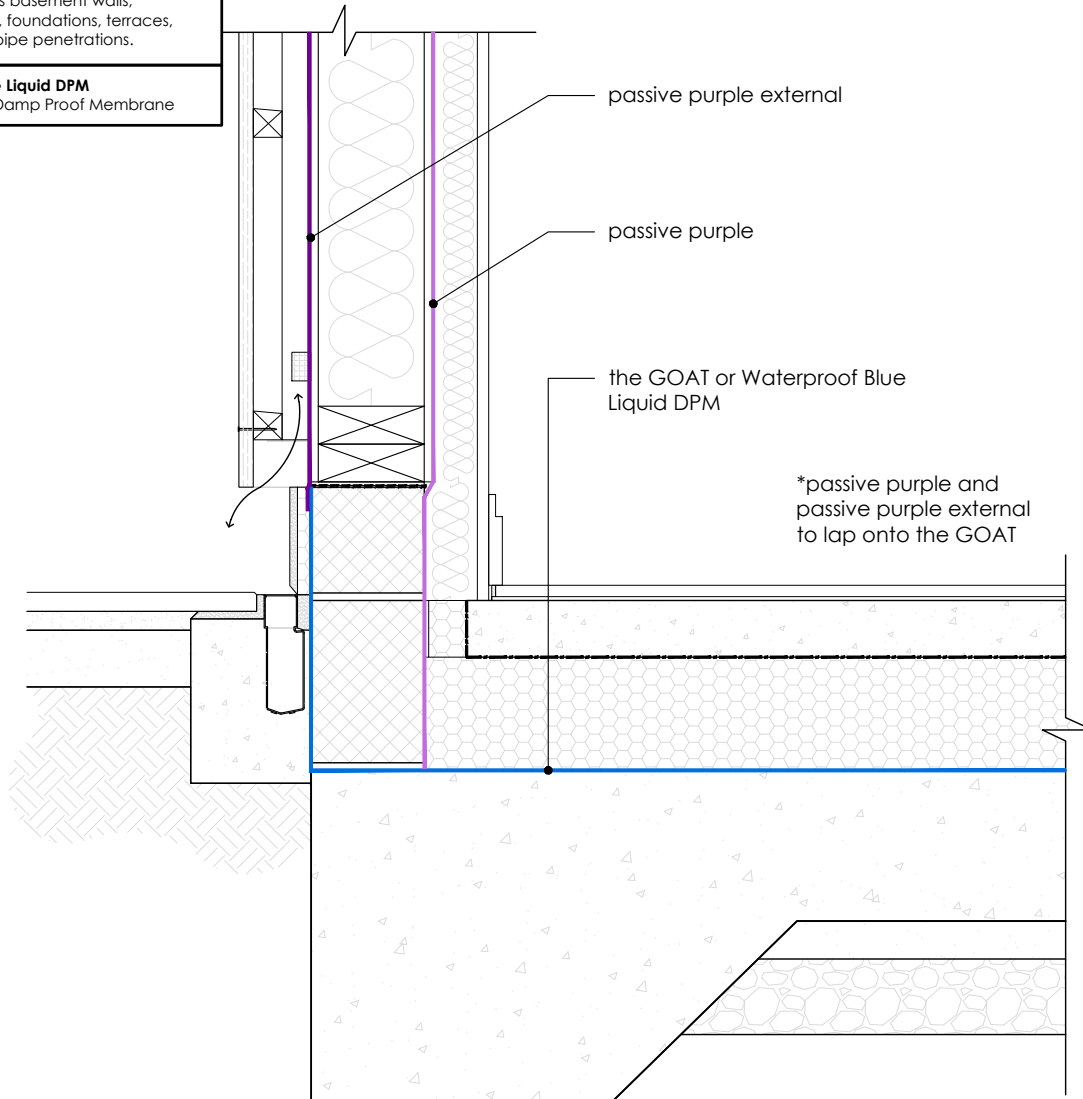
**Timber frame wall
Door head**

Passive Purple
Liquid applied internal airtight vapour control membrane

Passive Purple External
Liquid applied airtight vapour open facade waterproof membrane

the GOAT
Solvent-free waterproof coating with quick drying times. Ideal for waterproofing structures in concrete or masonry such as basement walls, basement roofs, foundations, terraces, balconies and pipe penetrations.

Waterproof Blue Liquid DPM
Liquid applied Damp Proof Membrane



*passive purple and passive purple external to lap onto the GOAT



INTELLIGENT MEMBRANES

Intelligent Membranes
Clopton Farm
Lower Road
Croydon
SG8 0EF
United Kingdom

tel: +44 (0)1223 080821

© Detail Library 2023

- Do not scale to ascertain dimensions.
- All dimensions to be checked and verified on site prior to commencement work.
- This detail is a guideline only, representing typical detailing conditions and illustrating the correct application of Intelligent Membranes products.
- It may be necessary to modify this detail to suit specific project design constraints and conditions.
- Refer to Intelligent Membranes specification for the product design action and method of application.
- These drawings are subject to the approval of all Statutory Building Control requirements and the requirements of all Statutory Authorities and Service Providers.
- These drawings are to be read in conjunction with product specifications and all other relevant documentation.
- All Intelligent Membranes products must lap on to another Intelligent Membranes product or other product to ensure airtightness and waterproofing.

Reference Number:

IM-T-W22

Scale:

1:10

Rev:

R0

Date:

JUN 23

Drawing Name:

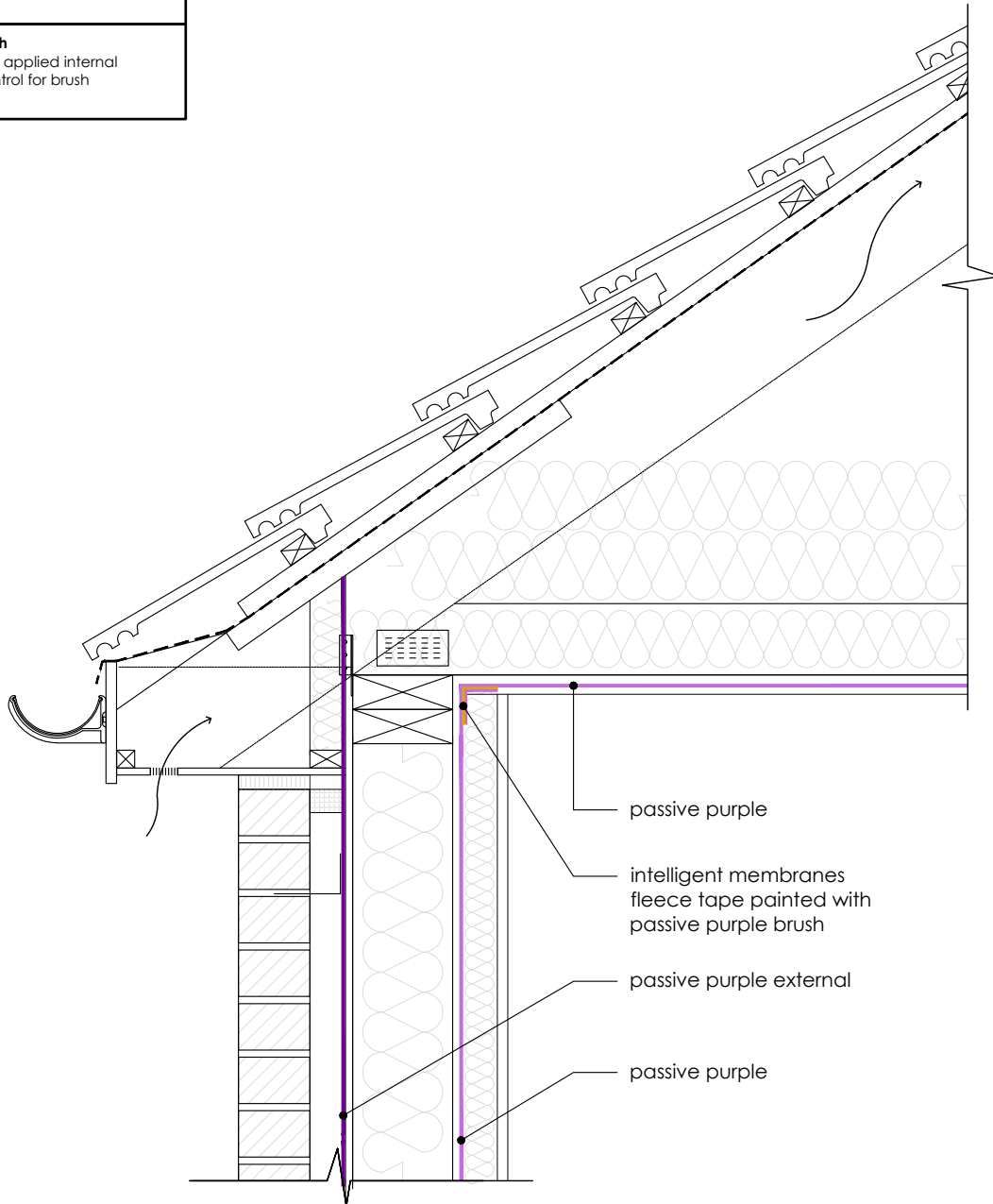
**Timber frame wall
Door adjoining level**

Passive Purple
Liquid applied internal airtight vapour control membrane

Passive Purple External
Liquid applied airtight vapour open facade waterproof membrane

Intelligent Membranes Fleece Tape
Airtightness tape for windows and connecting joints

Passive Purple Brush
Ready to use liquid applied internal airtight vapour control for brush application



INTELLIGENT MEMBRANES

Intelligent Membranes
Clopton Farm
Lower Road
Croydon
SG8 0EF
United Kingdom

tel: +44 (0)1223 080821

© Detail Library 2023

- Do not scale to ascertain dimensions.
- All dimensions to be checked and verified on site prior to commencement work.
- This detail is a guideline only, representing typical detailing conditions and illustrating the correct application of Intelligent Membranes products.
- It may be necessary to modify this detail to suit specific project design constraints and conditions.
- Refer to Intelligent Membranes specification for the product design action and method of application.
- These drawings are subject to the approval of all Statutory Building Control requirements and the requirements of all Statutory Authorities and Service Providers.
- These drawings are to be read in conjunction with product specifications and all other relevant documentation.
- All Intelligent Membranes products must lap on to another Intelligent Membranes product or other product to ensure airtightness and waterproofing.

Reference Number:

IM-T-R1

Scale:

1:10

Rev:

R0

Date:

JUN 23

Drawing Name:

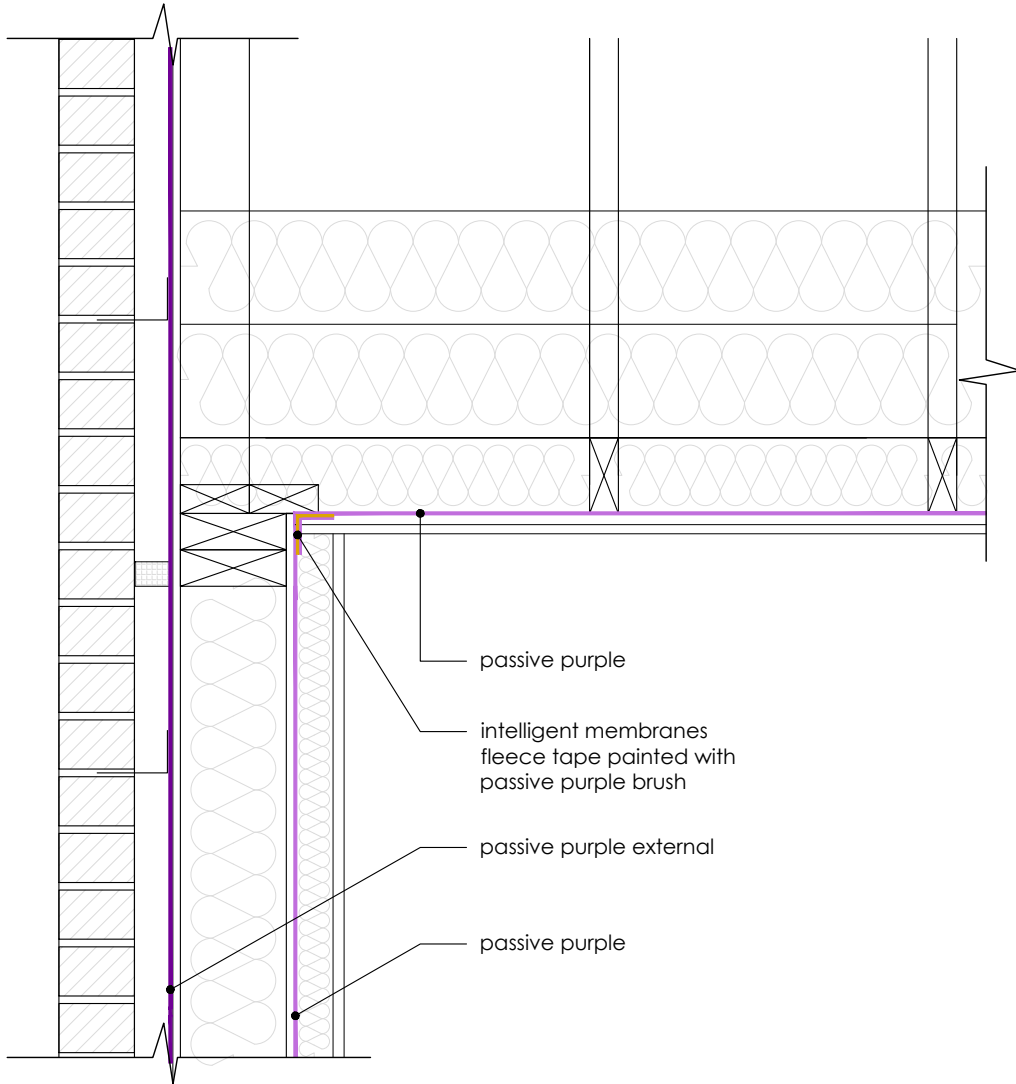
**Timber frame wall
Eaves detail**

Passive Purple
Liquid applied internal airtight vapour control membrane

Passive Purple External
Liquid applied airtight vapour open facade waterproof membrane

Intelligent Membranes Fleece Tape
Airtightness tape for windows and connecting joints

Passive Purple Brush
Ready to use liquid applied internal airtight vapour control for brush application



INTELLIGENT MEMBRANES

Intelligent Membranes
Clopton Farm
Lower Road
Croydon
SG8 0EF
United Kingdom

tel: +44 (0)1223 080821

© Detail Library 2023

- Do not scale to ascertain dimensions.
- All dimensions to be checked and verified on site prior to commencement work.
- This detail is a guideline only, representing typical detailing conditions and illustrating the correct application of Intelligent Membranes products.
- It may be necessary to modify this detail to suit specific project design constraints and conditions.
- Refer to Intelligent Membranes specification for the product design action and method of application.
- These drawings are subject to the approval of all Statutory Building Control requirements and the requirements of all Statutory Authorities and Service Providers.
- These drawings are to be read in conjunction with product specifications and all other relevant documentation.
- All Intelligent Membranes products must lap on to another Intelligent Membranes product or other product to ensure airtightness and waterproofing.

Reference Number:

IM-T-R2

Scale:

1:10

Rev:

R0

Date:

JUN 23

Drawing Name:

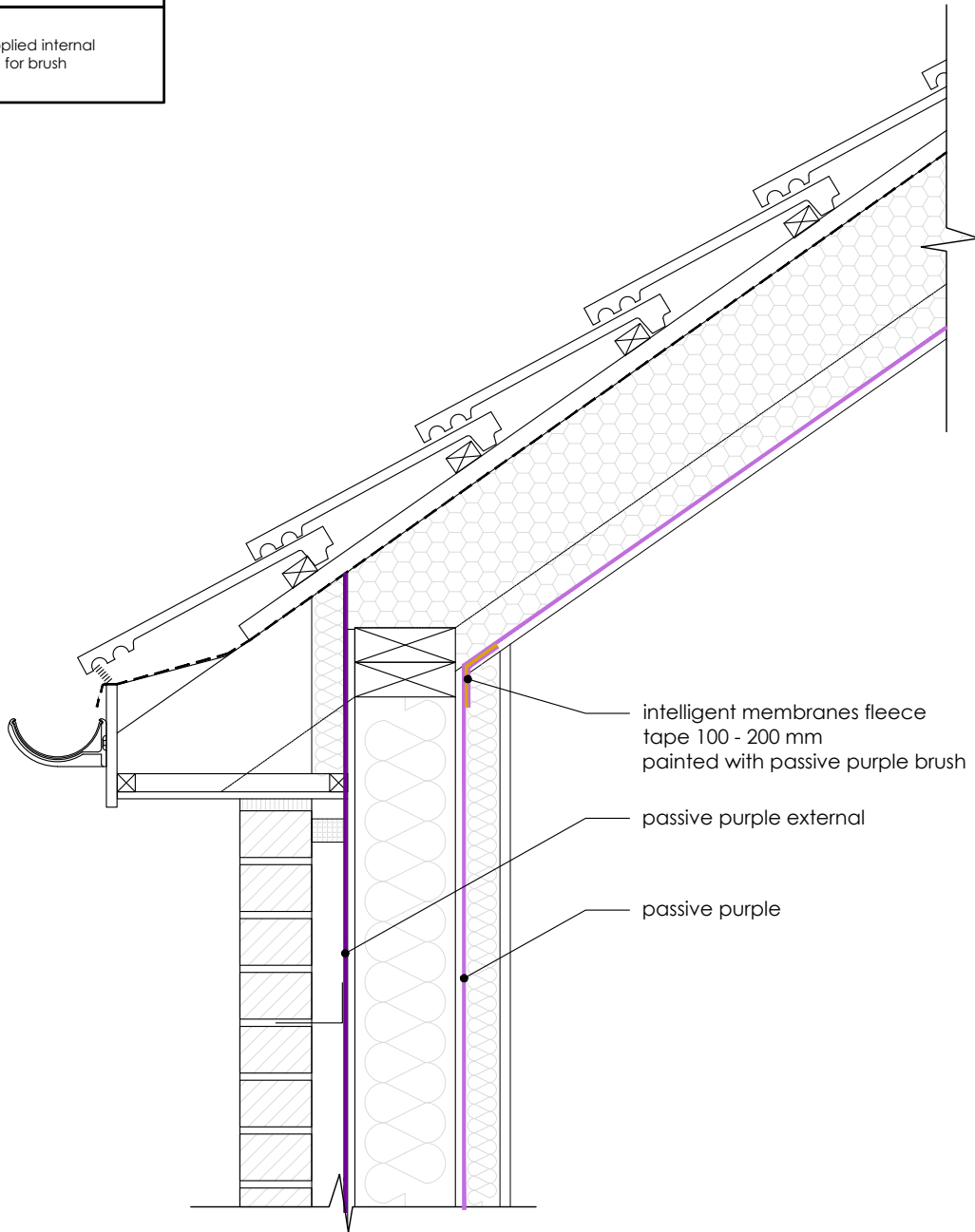
**Timber frame wall
Gable detail**

Passive Purple
Liquid applied internal airtight vapour control membrane

Passive Purple External
Liquid applied airtight vapour open facade waterproof membrane

Intelligent Membranes Fleece Tape
Airtightness tape for windows and connecting joints

Passive Purple Brush
Ready to use liquid applied internal airtight vapour control for brush application



INTELLIGENT MEMBRANES

Intelligent Membranes
Clopton Farm
Lower Road
Croydon
SG8 0EF
United Kingdom

tel: +44 (0)1223 080821

© Detail Library 2023

- Do not scale to ascertain dimensions.
- All dimensions to be checked and verified on site prior to commencement work.
- This detail is a guideline only, representing typical detailing conditions and illustrating the correct application of Intelligent Membranes products.
- It may be necessary to modify this detail to suit specific project design constraints and conditions.
- Refer to Intelligent Membranes specification for the product design action and method of application.
- These drawings are subject to the approval of all Statutory Building Control requirements and the requirements of all Statutory Authorities and Service Providers.
- These drawings are to be read in conjunction with product specifications and all other relevant documentation.
- All Intelligent Membranes products must lap on to another Intelligent Membranes product or other product to ensure airtightness and waterproofing.

Reference Number:

IM-T-R3

Scale:

1:10

Rev:

R0

Date:

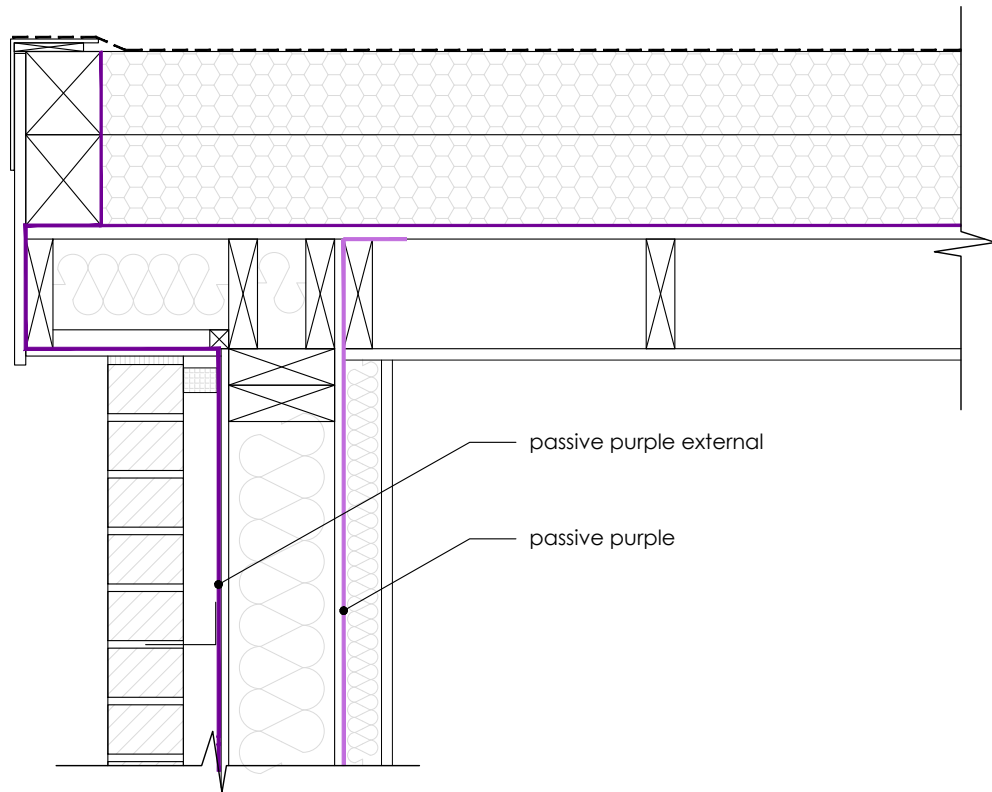
JUN 23

Drawing Name:

**Timber frame wall
Eaves detail -
unventilated**

Passive Purple
Liquid applied internal airtight vapour control membrane

Passive Purple External
Liquid applied airtight vapour open facade waterproof membrane



INTELLIGENT MEMBRANES

Intelligent Membranes
Clopton Farm
Lower Road
Croydon
SG8 0EF
United Kingdom

tel: +44 (0)1223 080821

© Detail Library 2023

- Do not scale to ascertain dimensions.
- All dimensions to be checked and verified on site prior to commencement work.
- This detail is a guideline only, representing typical detailing conditions and illustrating the correct application of Intelligent Membranes products.
- It may be necessary to modify this detail to suit specific project design constraints and conditions.
- Refer to Intelligent Membranes specification for the product design action and method of application.
- These drawings are subject to the approval of all Statutory Building Control requirements and the requirements of all Statutory Authorities and Service Providers.
- These drawings are to be read in conjunction with product specifications and all other relevant documentation.
- All Intelligent Membranes products must lap on to another Intelligent Membranes product or other product to ensure airtightness and waterproofing.

Reference Number:

IM-T-R6

Scale:

1:10

Rev:

R0

Date:

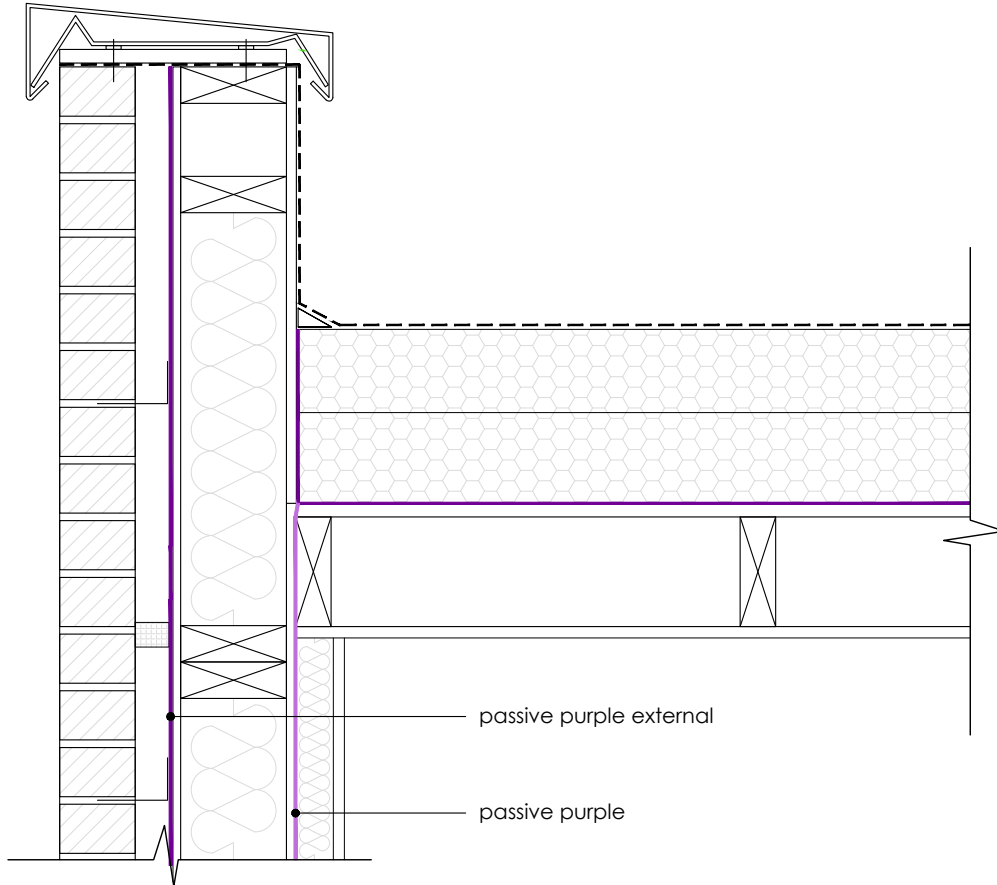
JUN 23

Drawing Name:

Timber frame wall
Flat roof

Passive Purple
Liquid applied internal airtight vapour control membrane

Passive Purple External
Liquid applied airtight vapour open facade waterproof membrane



INTELLIGENT MEMBRANES

Intelligent Membranes
Clopton Farm
Lower Road
Croydon
SG8 0EF
United Kingdom

tel: +44 (0)1223 080821

© Detail Library 2023

- Do not scale to ascertain dimensions.
- All dimensions to be checked and verified on site prior to commencement work.
- This detail is a guideline only, representing typical detailing conditions and illustrating the correct application of Intelligent Membranes products.
- It may be necessary to modify this detail to suit specific project design constraints and conditions.
- Refer to Intelligent Membranes specification for the product design action and method of application.
- These drawings are subject to the approval of all Statutory Building Control requirements and the requirements of all Statutory Authorities and Service Providers.
- These drawings are to be read in conjunction with product specifications and all other relevant documentation.
- All Intelligent Membranes products must lap on to another Intelligent Membranes product or other product to ensure airtightness and waterproofing.

Reference Number:

IM-T-R7

Scale:

1:10

Rev:

R0

Date:

JUN 23

Drawing Name:

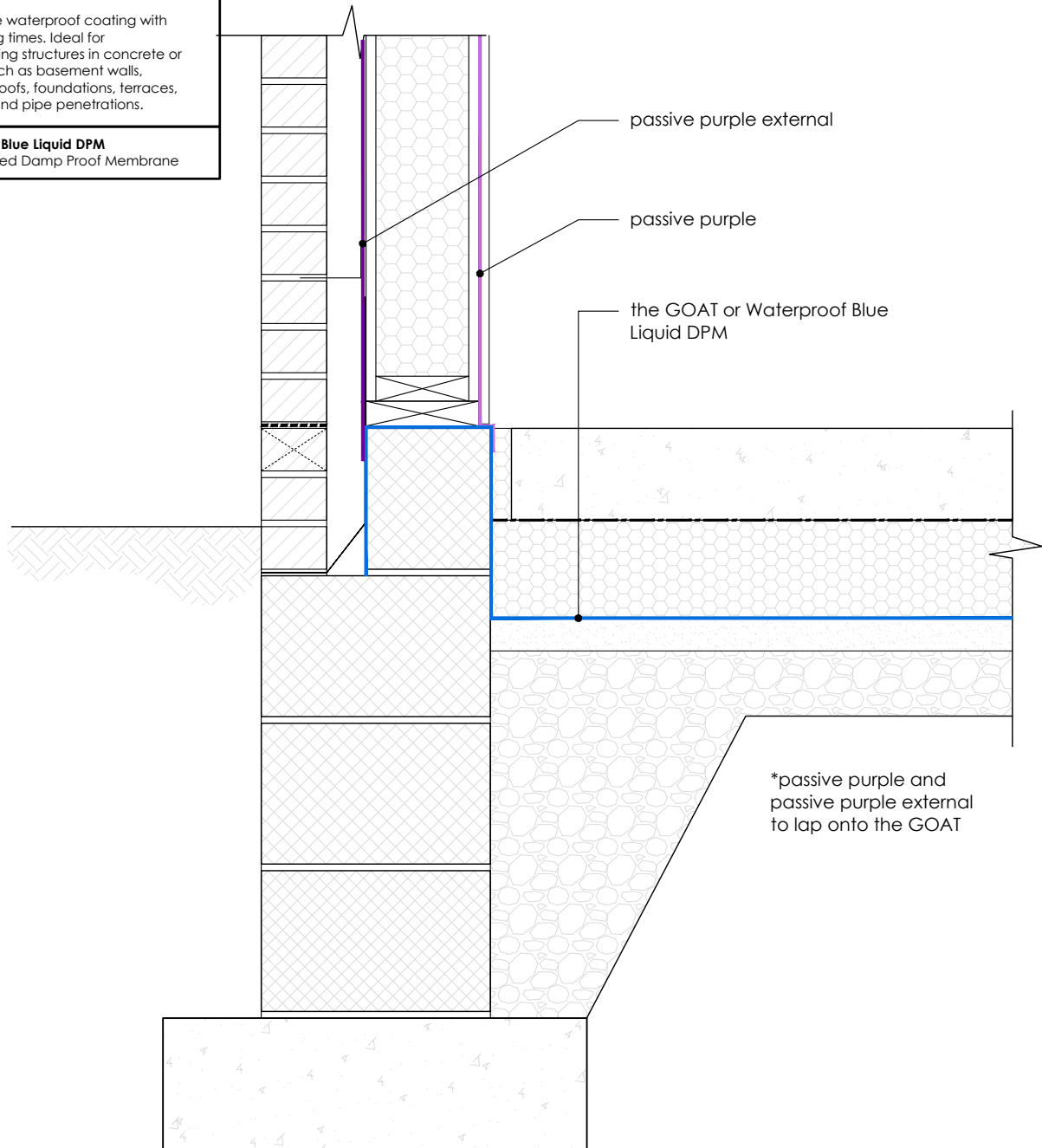
**Timber frame wall
Flat roof parapet**

Passive Purple
Liquid applied internal airtight vapour control membrane

Passive Purple External
Liquid applied airtight vapour open facade waterproof membrane

the GOAT
Solvent-free waterproof coating with quick drying times. Ideal for waterproofing structures in concrete or masonry such as basement walls, basement roofs, foundations, terraces, balconies and pipe penetrations.

Waterproof Blue Liquid DPM
Liquid applied Damp Proof Membrane



INTELLIGENT MEMBRANES

Intelligent Membranes
Clopton Farm
Lower Road
Croydon
SG8 0EF
United Kingdom

tel: +44 (0)1223 080821

© Detail Library 2023

- Do not scale to ascertain dimensions.
- All dimensions to be checked and verified on site prior to commencement work.
- This detail is a guideline only, representing typical detailing conditions and illustrating the correct application of Intelligent Membranes products.
- It may be necessary to modify this detail to suit specific project design constraints and conditions.
- Refer to Intelligent Membranes specification for the product design action and method of application.
- These drawings are subject to the approval of all Statutory Building Control requirements and the requirements of all Statutory Authorities and Service Providers.
- These drawings are to be read in conjunction with product specifications and all other relevant documentation.
- All Intelligent Membranes products must lap on to another Intelligent Membranes product or other product to ensure airtightness and waterproofing.

Reference Number:

IM-SIP-1

Scale:

1:10

Rev:

R0

Date:

JUN 23

Drawing Name:

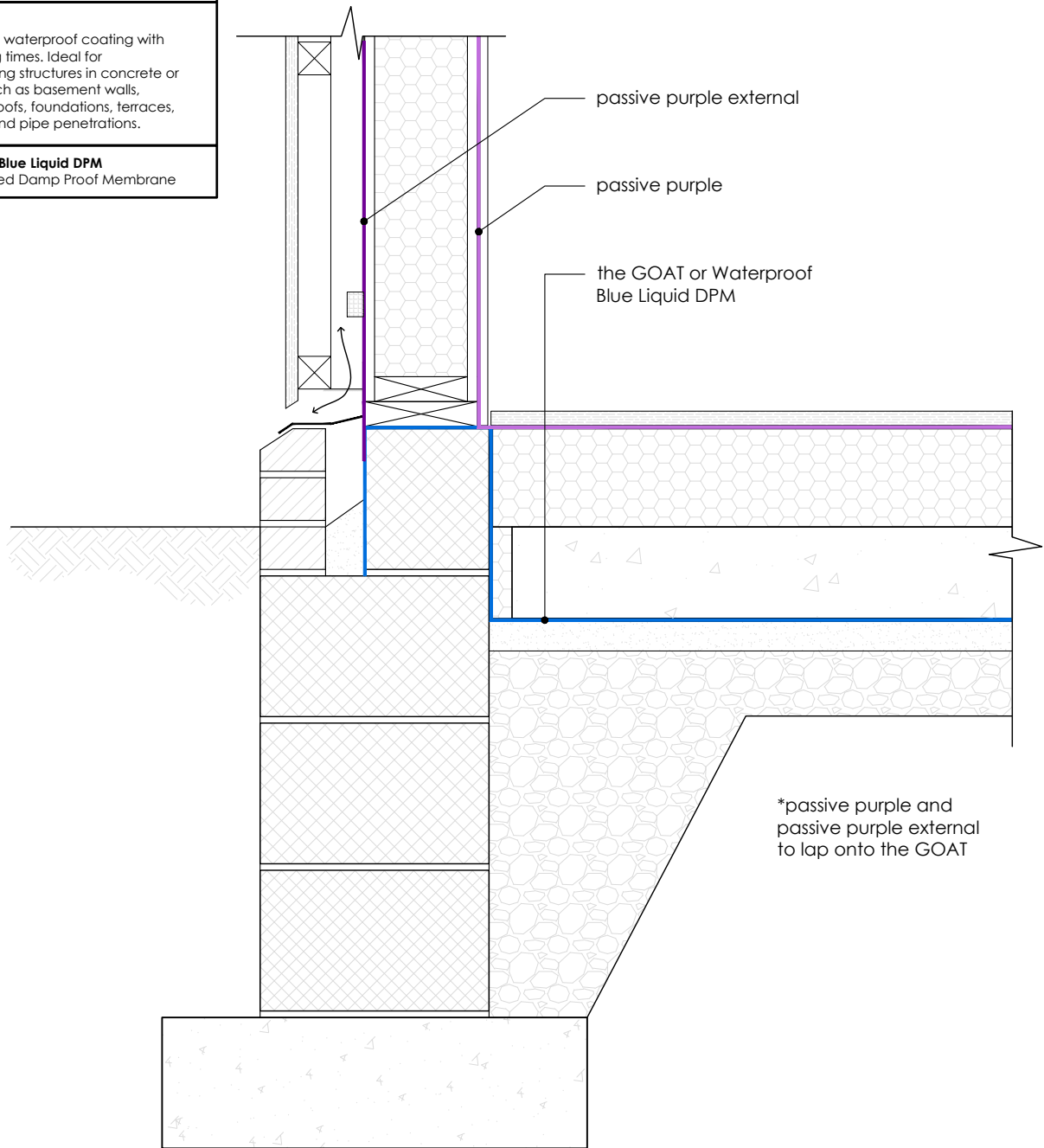
**SIP brick cladding
Insulation below slab**

Passive Purple
Liquid applied internal airtight vapour control membrane

Passive Purple External
Liquid applied airtight vapour open facade waterproof membrane

the GOAT
Solvent-free waterproof coating with quick drying times. Ideal for waterproofing structures in concrete or masonry such as basement walls, basement roofs, foundations, terraces, balconies and pipe penetrations.

Waterproof Blue Liquid DPM
Liquid applied Damp Proof Membrane



INTELLIGENT MEMBRANES

Intelligent Membranes
Clopton Farm
Lower Road
Croydon
SG8 0EF
United Kingdom

tel: +44 (0)1223 080821

© Detail Library 2023

- Do not scale to ascertain dimensions.
- All dimensions to be checked and verified on site prior to commencement work.
- This detail is a guideline only, representing typical detailing conditions and illustrating the correct application of Intelligent Membranes products.
- It may be necessary to modify this detail to suit specific project design constraints and conditions.
- Refer to Intelligent Membranes specification for the product design action and method of application.
- These drawings are subject to the approval of all Statutory Building Control requirements and the requirements of all Statutory Authorities and Service Providers.
- These drawings are to be read in conjunction with product specifications and all other relevant documentation.
- All Intelligent Membranes products must lap on to another Intelligent Membranes product or other product to ensure airtightness and waterproofing.

Reference Number:

IM-SIP-2

Scale:

1:10

Rev:

R0

Date:

JUN 23

Drawing Name:

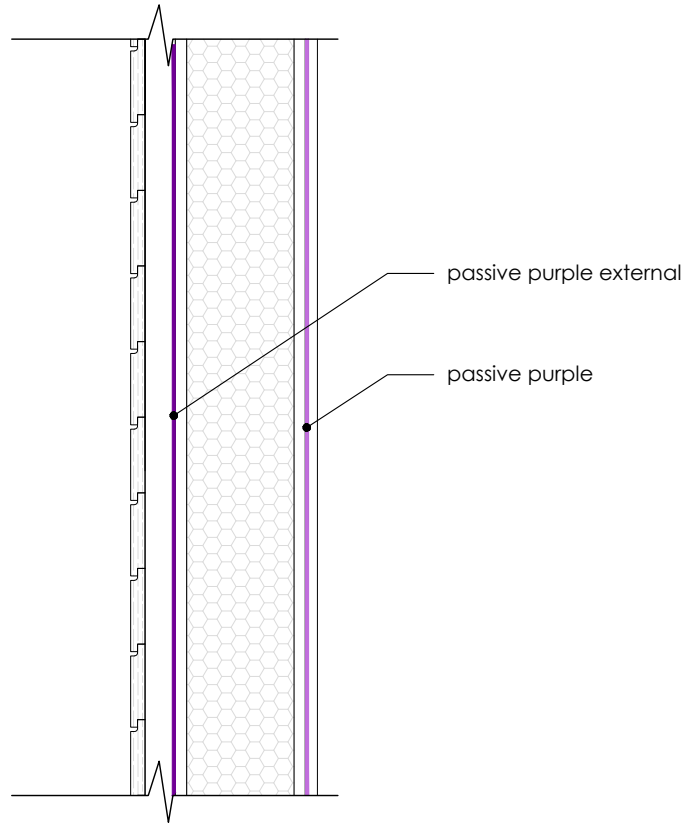
**SIP panel
Insulation above slab**

Passive Purple

Liquid applied internal airtight vapour control membrane

Passive Purple External

Liquid applied airtight vapour open facade waterproof membrane



INTELLIGENT MEMBRANES

Intelligent Membranes
Clopton Farm
Lower Road
Croydon
SG8 0EF
United Kingdom

tel: +44 (0)1223 080821

© Detail Library 2023

- Do not scale to ascertain dimensions.
- All dimensions to be checked and verified on site prior to commencement work.
- This detail is a guideline only, representing typical detailing conditions and illustrating the correct application of Intelligent Membranes products.
- It may be necessary to modify this detail to suit specific project design constraints and conditions.
- Refer to Intelligent Membranes specification for the product design action and method of application.
- These drawings are subject to the approval of all Statutory Building Control requirements and the requirements of all Statutory Authorities and Service Providers.
- These drawings are to be read in conjunction with product specifications and all other relevant documentation.
- All Intelligent Membranes products must lap on to another Intelligent Membranes product or other product to ensure airtightness and waterproofing.

Reference Number:

IM-SIP-4

Scale:

1:10

Rev:

R0

Date:

JUN 23

Drawing Name:

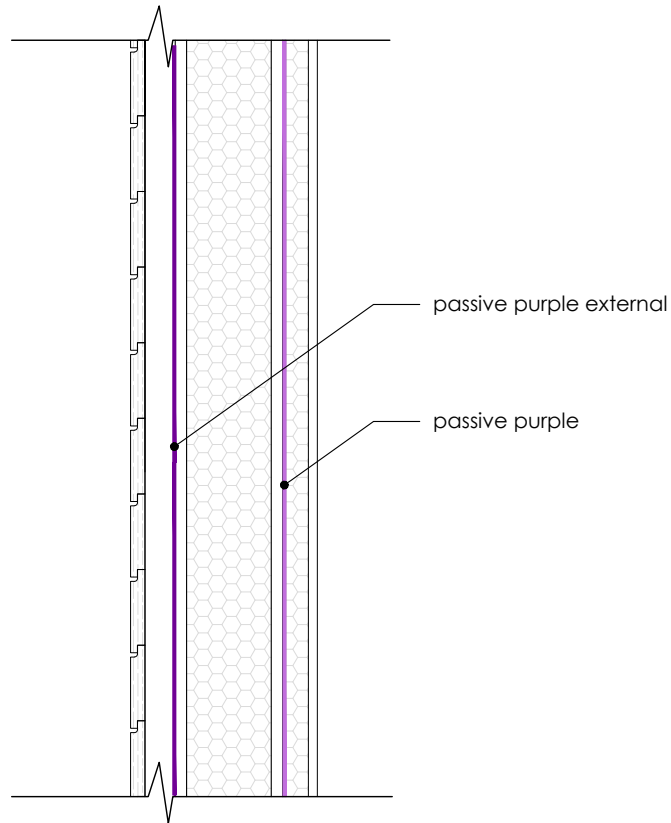
**SIP panel
Horizontal timber
cladding**

Passive Purple

Liquid applied internal airtight vapour control membrane

Passive Purple External

Liquid applied airtight vapour open facade waterproof membrane



INTELLIGENT MEMBRANES

Intelligent Membranes
Clopton Farm
Lower Road
Croydon
SG8 0EF
United Kingdom

tel: +44 (0)1223 080821

© Detail Library 2023

- Do not scale to ascertain dimensions.
- All dimensions to be checked and verified on site prior to commencement work.
- This detail is a guideline only, representing typical detailing conditions and illustrating the correct application of Intelligent Membranes products.
- It may be necessary to modify this detail to suit specific project design constraints and conditions.
- Refer to Intelligent Membranes specification for the product design action and method of application.
- These drawings are subject to the approval of all Statutory Building Control requirements and the requirements of all Statutory Authorities and Service Providers.
- These drawings are to be read in conjunction with product specifications and all other relevant documentation.
- All Intelligent Membranes products must lap on to another Intelligent Membranes product or other product to ensure airtightness and waterproofing.

Reference Number:

IM-SIP-5

Scale:

1:10

Rev:

R0

Date:

JUN 23

Drawing Name:

SIP panel
Horizontal timber
cladding (thinner panel)

Passive Purple

Liquid applied internal airtight vapour control membrane

Passive Purple External

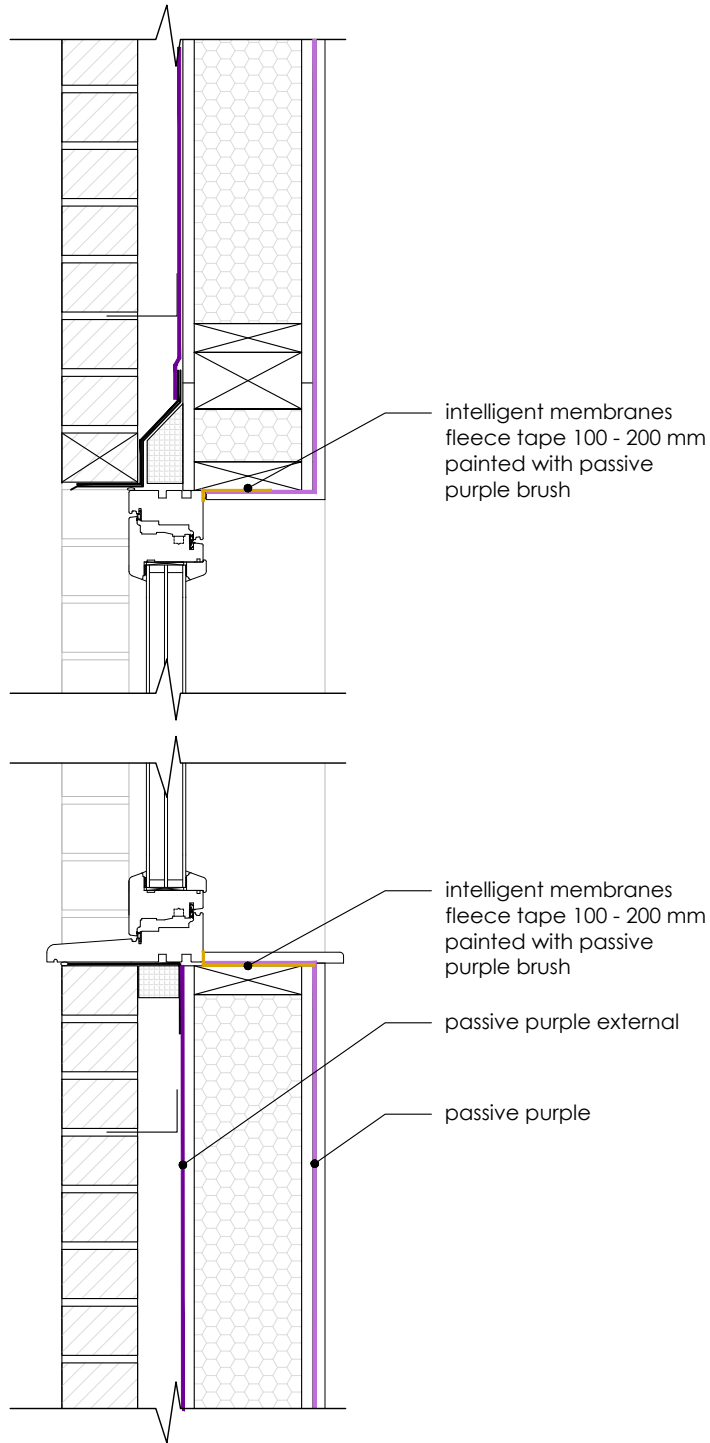
Liquid applied airtight vapour open facade waterproof membrane

Intelligent Membranes Fleece Tape

Airtightness tape for windows and connecting joints

Passive Purple Brush

Ready to use liquid applied internal airtight vapour control for brush application



INTELLIGENT MEMBRANES

Intelligent Membranes
Clopton Farm
Lower Road
Croydon
SG8 0EF
United Kingdom

tel: +44 (0)1223 080821

© Detail Library 2023

- Do not scale to ascertain dimensions.
- All dimensions to be checked and verified on site prior to commencement work.
- This detail is a guideline only, representing typical detailing conditions and illustrating the correct application of Intelligent Membranes products.
- It may be necessary to modify this detail to suit specific project design constraints and conditions.
- Refer to Intelligent Membranes specification for the product design action and method of application.
- These drawings are subject to the approval of all Statutory Building Control requirements and the requirements of all Statutory Authorities and Service Providers.
- These drawings are to be read in conjunction with product specifications and all other relevant documentation.
- All Intelligent Membranes products must lap on to another Intelligent Membranes product or other product to ensure airtightness and waterproofing.

Reference Number:

IM-SIP-9

Scale:

1:10

Rev:

R0

Date:

JUN 23

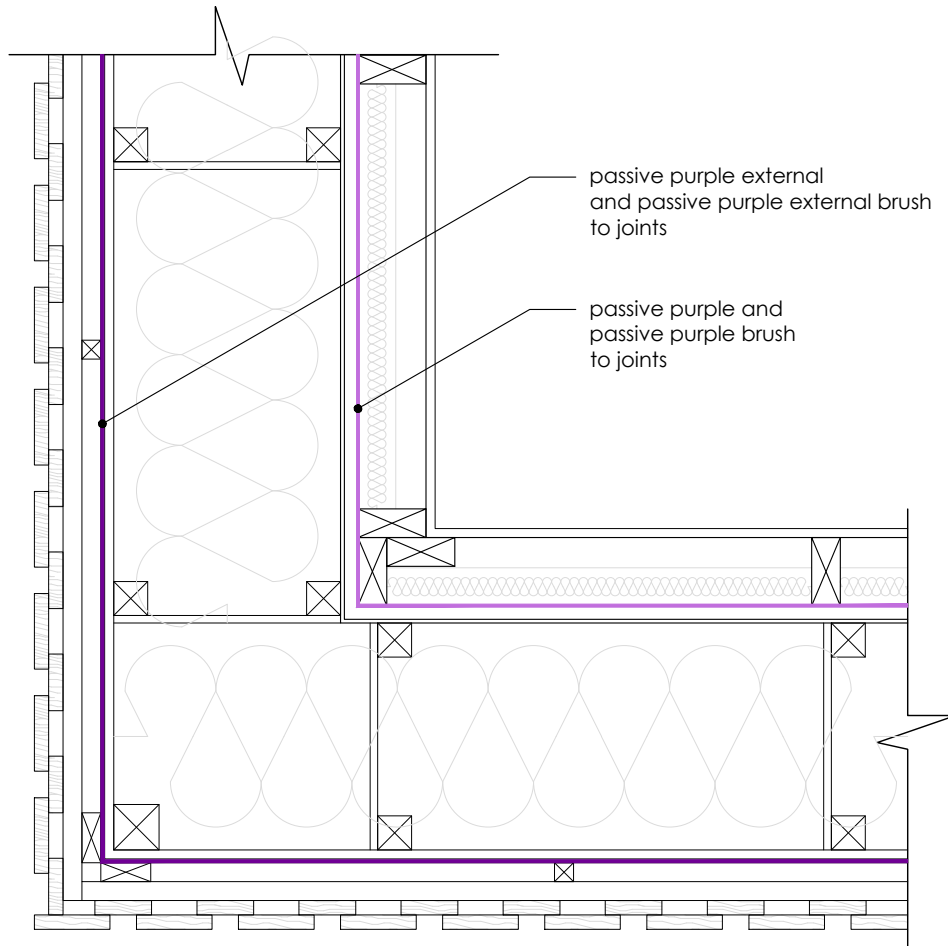
Drawing Name:

**SIP brick cladding
Window head & cill**

Passive Purple
Liquid applied internal airtight vapour control membrane

Passive Purple External
Liquid applied airtight vapour open facade waterproof membrane

Passive Purple Brush
Ready to use liquid applied internal airtight vapour control for brush application



INTELLIGENT MEMBRANES

Intelligent Membranes
Clopton Farm
Lower Road
Croydon
SG8 0EF
United Kingdom

tel: +44 (0)1223 080821

© Detail Library 2023

- Do not scale to ascertain dimensions.
- All dimensions to be checked and verified on site prior to commencement work.
- This detail is a guideline only, representing typical detailing conditions and illustrating the correct application of Intelligent Membranes products.
- It may be necessary to modify this detail to suit specific project design constraints and conditions.
- Refer to Intelligent Membranes specification for the product design action and method of application.
- These drawings are subject to the approval of all Statutory Building Control requirements and the requirements of all Statutory Authorities and Service Providers.
- These drawings are to be read in conjunction with product specifications and all other relevant documentation.
- All Intelligent Membranes products must lap on to another Intelligent Membranes product or other product to ensure airtightness and waterproofing.

Reference Number:

IM-PH-T02

Scale:

1:10

Rev:

R0

Date:

SEP 23

Drawing Name:

**Timber frame wall
External corner**

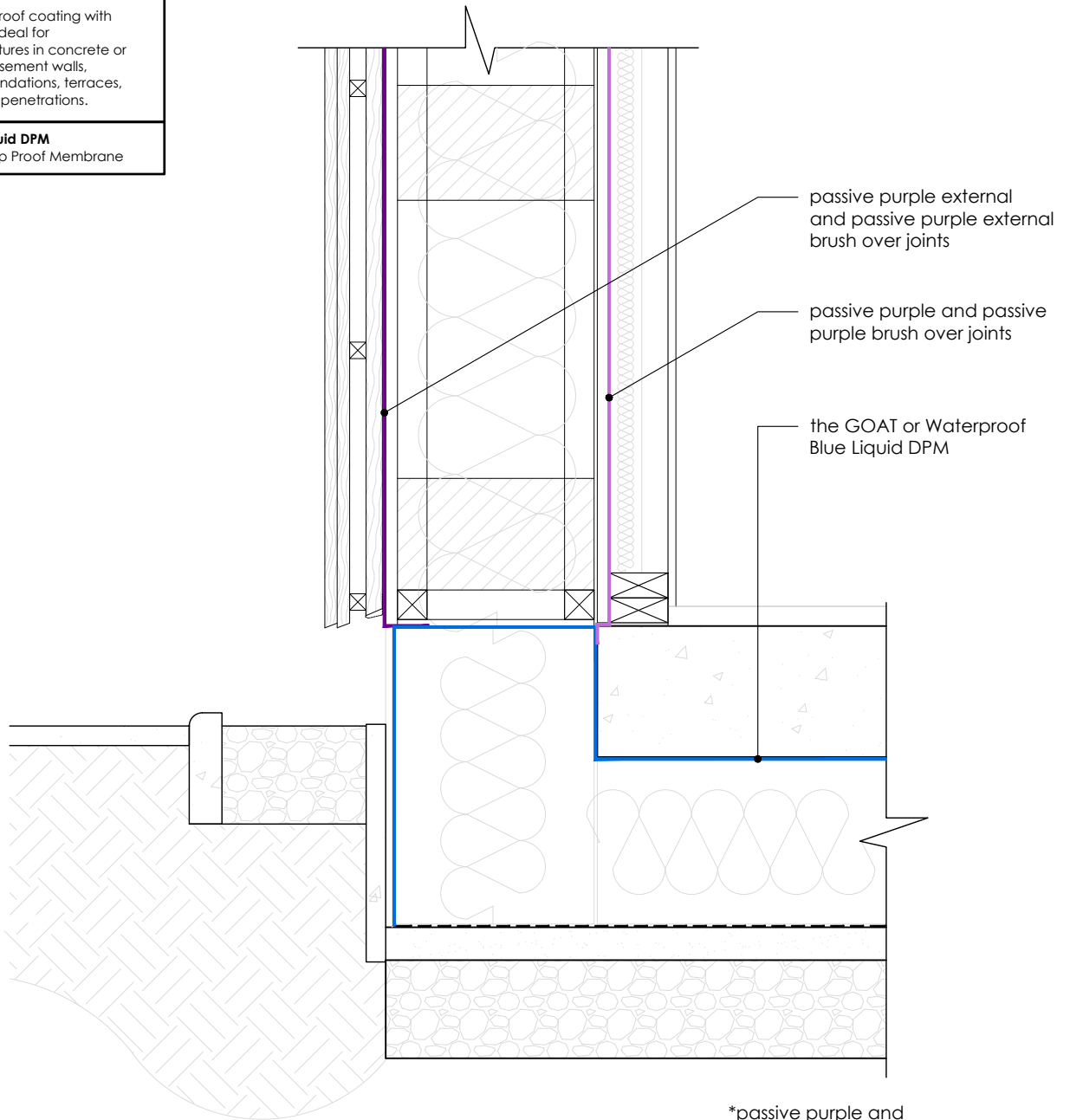
Passive Purple
Liquid applied internal airtight vapour control membrane

Passive Purple External
Liquid applied airtight vapour open facade waterproof membrane

Passive Purple Brush
Ready to use liquid applied internal airtight vapour control for brush application

the GOAT
Solvent-free waterproof coating with quick drying times. Ideal for waterproofing structures in concrete or masonry such as basement walls, basement roofs, foundations, terraces, balconies and pipe penetrations.

Waterproof Blue Liquid DPM
Liquid applied Damp Proof Membrane



*passive purple and passive purple to lap onto the GOAT



INTELLIGENT MEMBRANES

Intelligent Membranes
Clopton Farm
Lower Road
Croydon
SG8 0EF
United Kingdom

tel: +44 (0)1223 080821

© Detail Library 2023

- Do not scale to ascertain dimensions.
- All dimensions to be checked and verified on site prior to commencement work.
- This detail is a guideline only, representing typical detailing conditions and illustrating the correct application of Intelligent Membranes products.
- It may be necessary to modify this detail to suit specific project design constraints and conditions.
- Refer to Intelligent Membranes specification for the product design action and method of application.
- These drawings are subject to the approval of all Statutory Building Control requirements and the requirements of all Statutory Authorities and Service Providers.
- These drawings are to be read in conjunction with product specifications and all other relevant documentation.
- All Intelligent Membranes products must lap on to another Intelligent Membranes product or other product to ensure airtightness and waterproofing.

Reference Number:

IM-PH-T03

Scale:

1:10

Rev:

R0

Date:

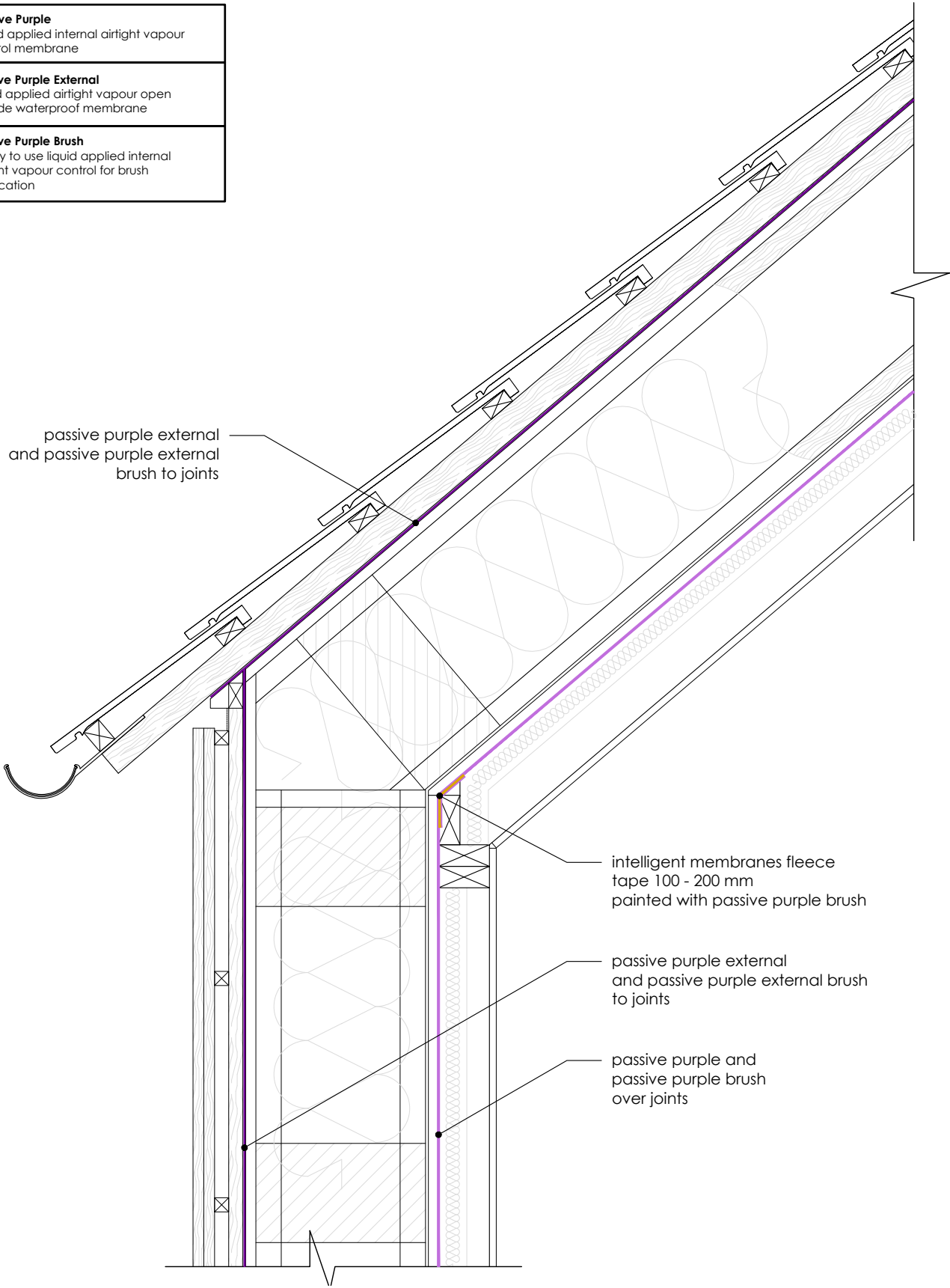
SEP 23

Drawing Name:

**Timber frame wall
Floor wall junction**

Passive Purple Liquid applied internal airtight vapour control membrane
Passive Purple External Liquid applied airtight vapour open facade waterproof membrane
Passive Purple Brush Ready to use liquid applied internal airtight vapour control for brush application

passive purple external and passive purple external brush to joints



intelligent membranes fleece tape 100 - 200 mm painted with passive purple brush

passive purple external and passive purple external brush to joints

passive purple and passive purple brush over joints



INTELLIGENT MEMBRANES

Intelligent Membranes
Clopton Farm
Lower Road
Croydon
SG8 0EF
United Kingdom
tel: +44 (0)1223 080821

© Detail Library 2023

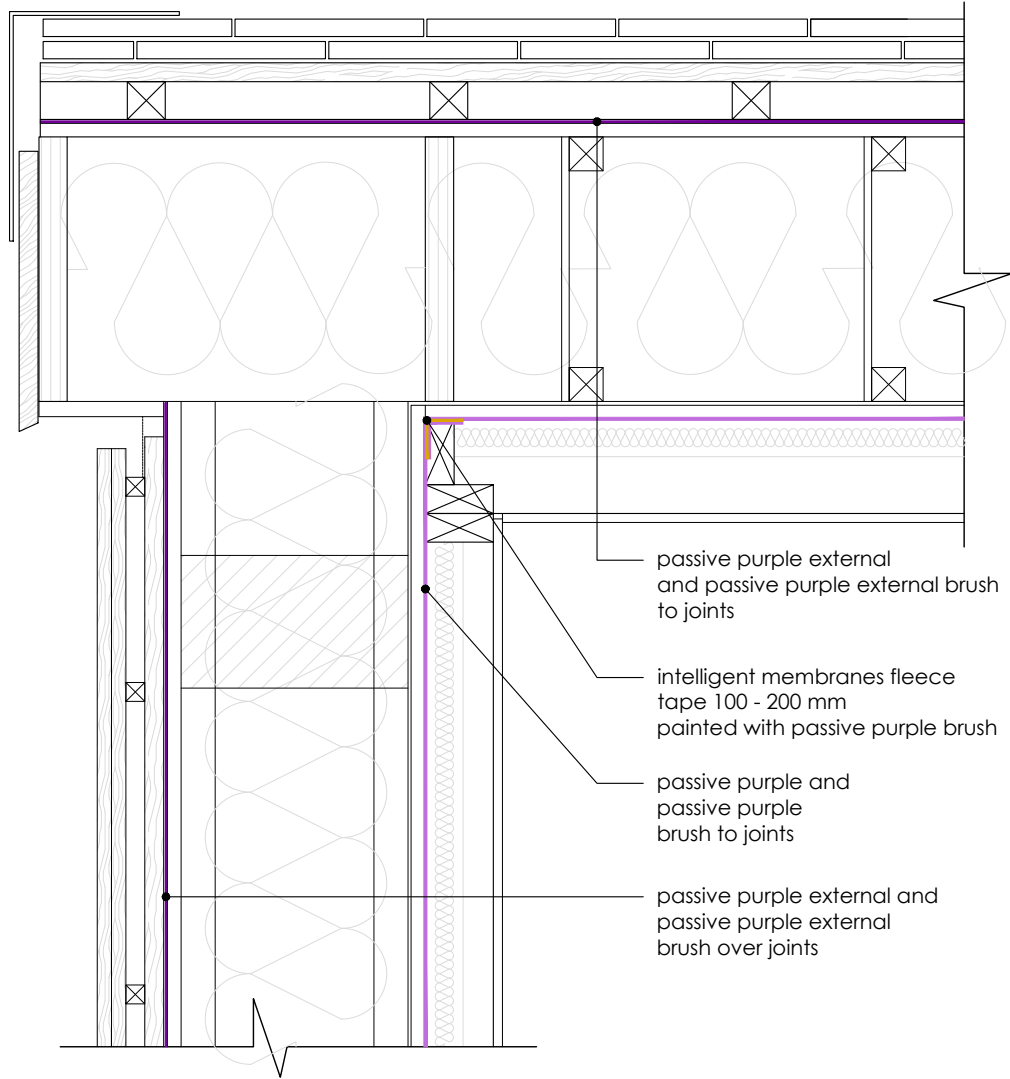
- Do not scale to ascertain dimensions.
- All dimensions to be checked and verified on site prior to commencement work.
- This detail is a guideline only, representing typical detailing conditions and illustrating the correct application of Intelligent Membranes products.
- It may be necessary to modify this detail to suit specific project design constraints and conditions.
- Refer to Intelligent Membranes specification for the product design action and method of application.
- These drawings are subject to the approval of all Statutory Building Control requirements and the requirements of all Statutory Authorities and Service Providers.
- These drawings are to be read in conjunction with product specifications and all other relevant documentation.
- All Intelligent Membranes products must lap on to another Intelligent Membranes product or other product to ensure airtightness and waterproofing.

Reference Number: IM-PH-T04		
Scale: 1:10	Rev: R0	Date: SEP 23
Drawing Name: Timber frame wall Wall roof junction		

Passive Purple
Liquid applied internal airtight vapour control membrane

Passive Purple External
Liquid applied airtight vapour open facade waterproof membrane

Passive Purple Brush
Ready to use liquid applied internal airtight vapour control for brush application



INTELLIGENT MEMBRANES

Intelligent Membranes
Clopton Farm
Lower Road
Croydon
SG8 0EF
United Kingdom

tel: +44 (0)1223 080821

© Detail Library 2023

- Do not scale to ascertain dimensions.
- All dimensions to be checked and verified on site prior to commencement work.
- This detail is a guideline only, representing typical detailing conditions and illustrating the correct application of Intelligent Membranes products.
- It may be necessary to modify this detail to suit specific project design constraints and conditions.
- Refer to Intelligent Membranes specification for the product design action and method of application.
- These drawings are subject to the approval of all Statutory Building Control requirements and the requirements of all Statutory Authorities and Service Providers.
- These drawings are to be read in conjunction with product specifications and all other relevant documentation.
- All Intelligent Membranes products must lap on to another Intelligent Membranes product or other product to ensure airtightness and waterproofing.

Reference Number:

IM-PH-T05

Scale:

1:10

Rev:

R0

Date:

SEP 23

Drawing Name:

**Timber frame wall
Gable verge**

Passive Purple
Liquid applied internal airtight vapour control membrane

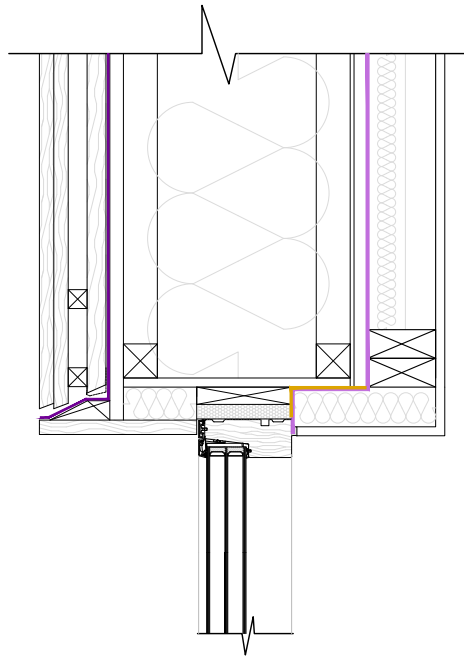
Passive Purple External
Liquid applied airtight vapour open facade waterproof membrane

the GOAT
Solvent-free waterproof coating with quick drying times. Ideal for waterproofing structures in concrete or masonry such as basement walls, basement roofs, foundations, terraces, balconies and pipe penetrations.

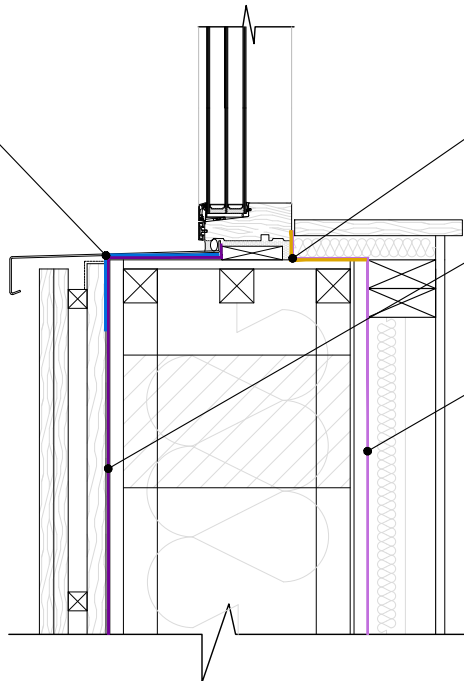
Waterproof Blue Liquid DPM
Liquid applied Damp Proof Membrane

Intelligent Membranes Fleece Tape
Airtightness tape for windows and connecting joints

Passive Purple Brush
Ready to use liquid applied internal airtight vapour control for brush application



the GOAT or Waterproof Blue Liquid DPM



intelligent membranes fleece tape painted with passive purple brush

passive purple external and passive purple external brush over joints

passive purple and passive purple brush over joints



INTELLIGENT MEMBRANES

Intelligent Membranes
Clopton Farm
Lower Road
Croydon
SG8 0EF
United Kingdom

tel: +44 (0)1223 080821

© Detail Library 2023

- Do not scale to ascertain dimensions.
- All dimensions to be checked and verified on site prior to commencement work.
- This detail is a guideline only, representing typical detailing conditions and illustrating the correct application of Intelligent Membranes products.
- It may be necessary to modify this detail to suit specific project design constraints and conditions.
- Refer to Intelligent Membranes specification for the product design action and method of application.
- These drawings are subject to the approval of all Statutory Building Control requirements and the requirements of all Statutory Authorities and Service Providers.
- These drawings are to be read in conjunction with product specifications and all other relevant documentation.
- All Intelligent Membranes products must lap on to another Intelligent Membranes product or other product to ensure airtightness and waterproofing.

Reference Number:

IM-PH-T06

Scale:

1:10

Rev:

R0

Date:

SEP 23

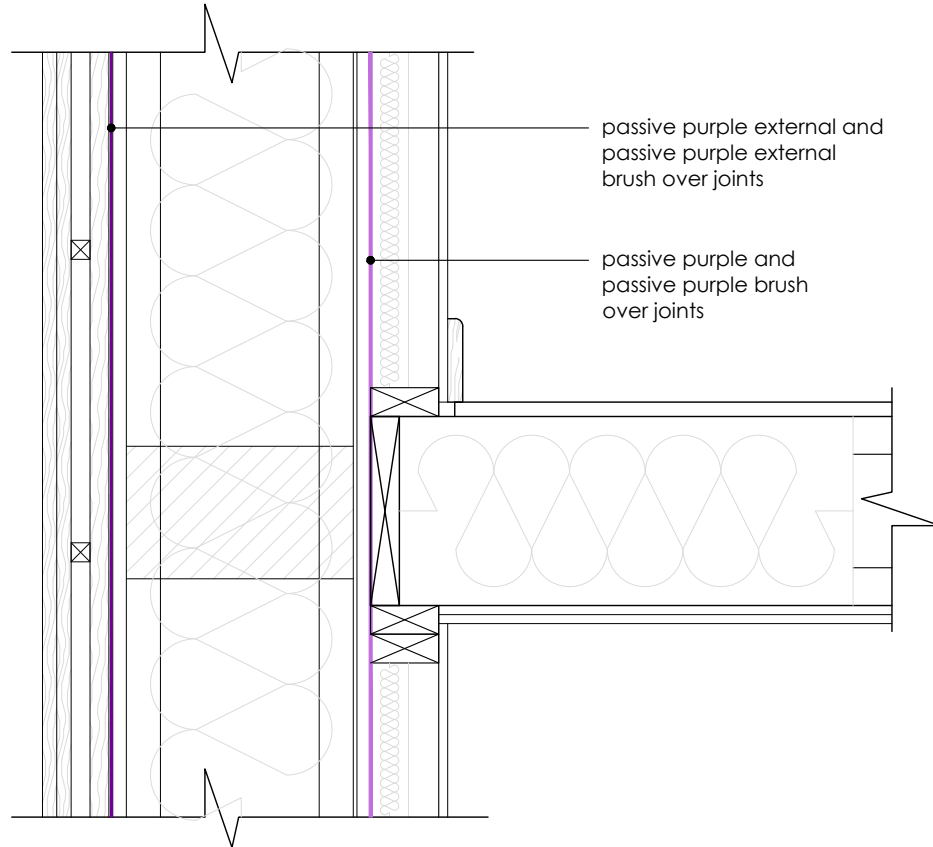
Drawing Name:

**Timber frame wall
Window head and sill**

Passive Purple
Liquid applied internal airtight vapour control membrane

Passive Purple External
Liquid applied airtight vapour open facade waterproof membrane

Passive Purple Brush
Ready to use liquid applied internal airtight vapour control for brush application



INTELLIGENT MEMBRANES

Intelligent Membranes
Clopton Farm
Lower Road
Croydon
SG8 0EF
United Kingdom

tel: +44 (0)1223 080821

© Detail Library 2023

- Do not scale to ascertain dimensions.
- All dimensions to be checked and verified on site prior to commencement work.
- This detail is a guideline only, representing typical detailing conditions and illustrating the correct application of Intelligent Membranes products.
- It may be necessary to modify this detail to suit specific project design constraints and conditions.
- Refer to Intelligent Membranes specification for the product design action and method of application.
- These drawings are subject to the approval of all Statutory Building Control requirements and the requirements of all Statutory Authorities and Service Providers.
- These drawings are to be read in conjunction with product specifications and all other relevant documentation.
- All Intelligent Membranes products must lap on to another Intelligent Membranes product or other product to ensure airtightness and waterproofing.

Reference Number:

IM-PH-T08

Scale:

1:10

Rev:

R0

Date:

SEP 23

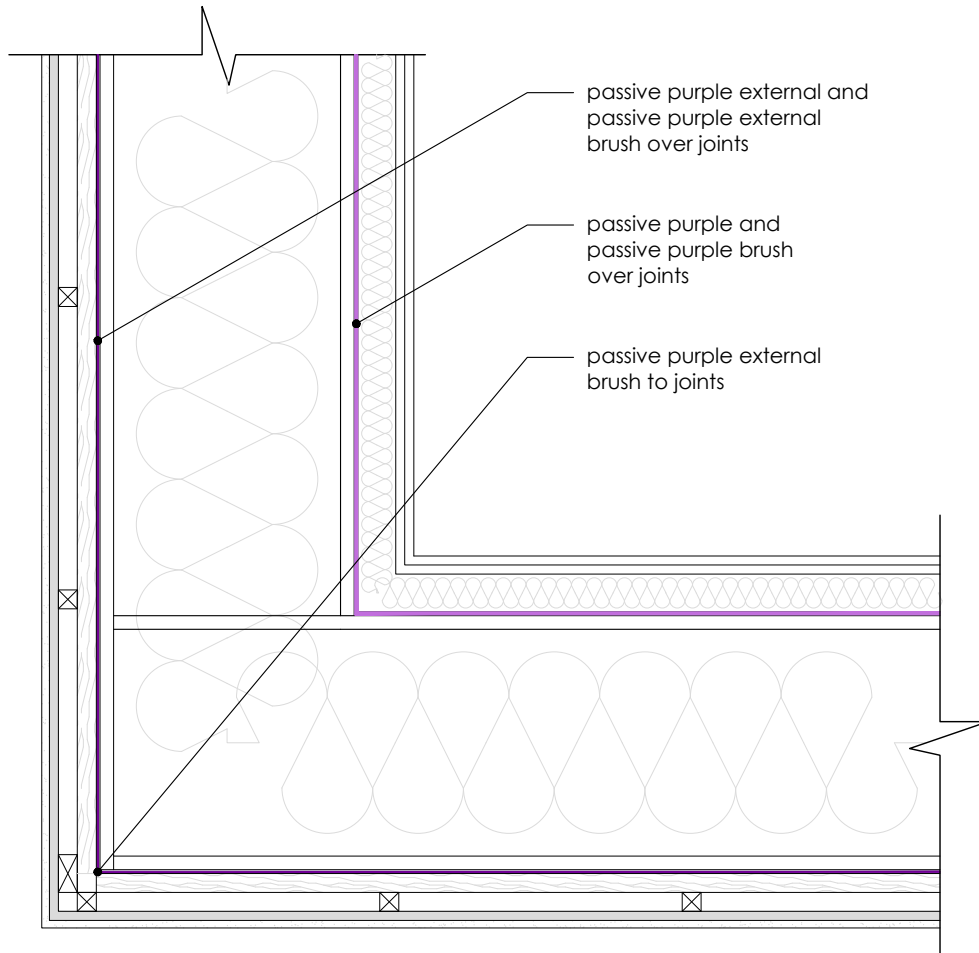
Drawing Name:

**Timber frame wall
Intermediate floor**

Passive Purple
Liquid applied internal airtight vapour control membrane

Passive Purple External
Liquid applied airtight vapour open facade waterproof membrane

Passive Purple Brush
Ready to use liquid applied internal airtight vapour control for brush application



INTELLIGENT MEMBRANES

Intelligent Membranes
Clopton Farm
Lower Road
Croydon
SG8 0EF
United Kingdom

tel: +44 (0)1223 080821

© Detail Library 2023

- Do not scale to ascertain dimensions.
- All dimensions to be checked and verified on site prior to commencement work.
- This detail is a guideline only, representing typical detailing conditions and illustrating the correct application of Intelligent Membranes products.
- It may be necessary to modify this detail to suit specific project design constraints and conditions.
- Refer to Intelligent Membranes specification for the product design action and method of application.
- These drawings are subject to the approval of all Statutory Building Control requirements and the requirements of all Statutory Authorities and Service Providers.
- These drawings are to be read in conjunction with product specifications and all other relevant documentation.
- All Intelligent Membranes products must lap on to another Intelligent Membranes product or other product to ensure airtightness and waterproofing.

Reference Number:

IM-PH-T10

Scale:

1:10

Rev:

R0

Date:

SEP 23

Drawing Name:

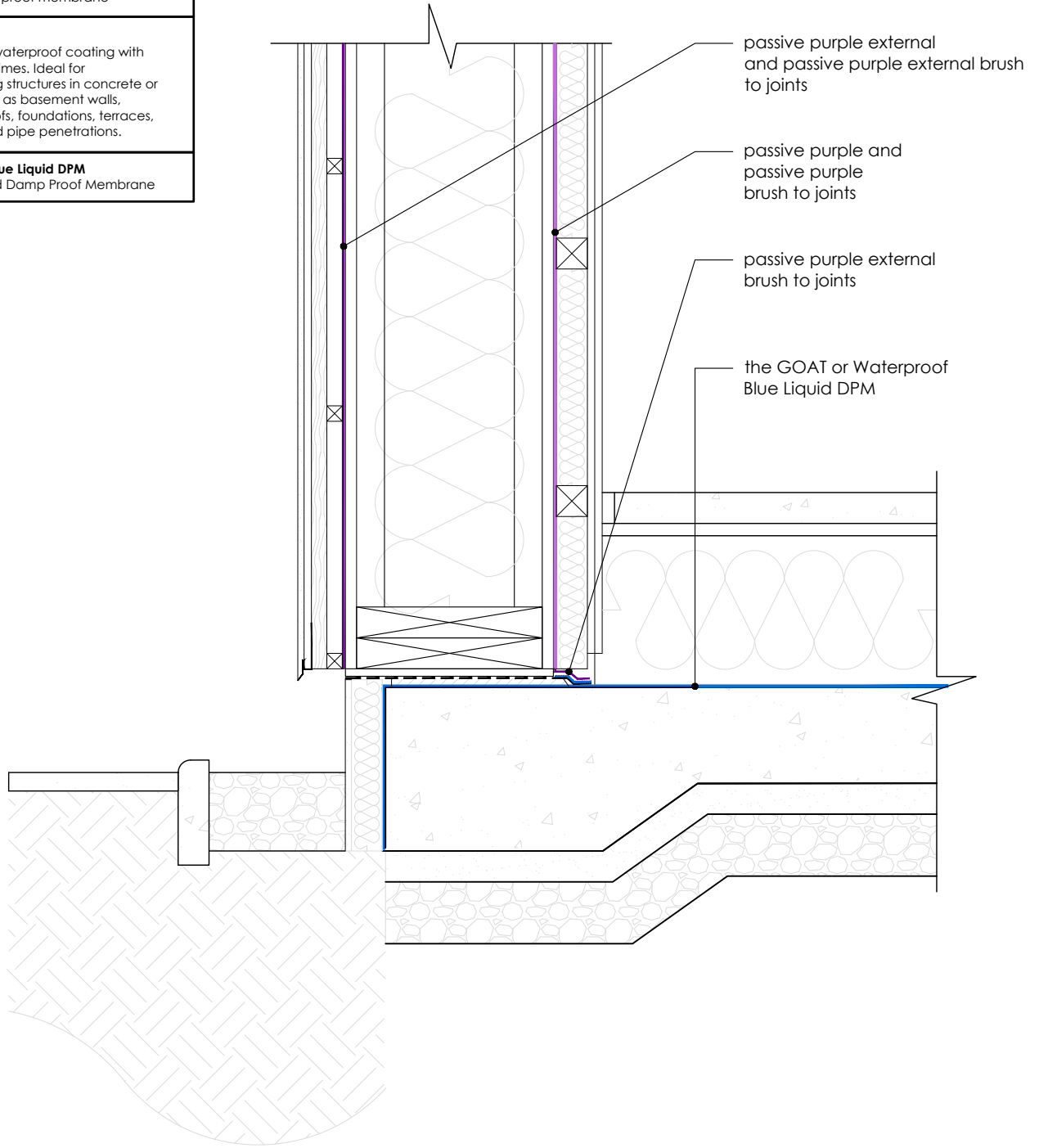
**Timber I-Beam wall
External corner**

Passive Purple
Liquid applied internal airtight vapour control membrane

Passive Purple External
Liquid applied airtight vapour open facade waterproof membrane

the GOAT
Solvent-free waterproof coating with quick drying times. Ideal for waterproofing structures in concrete or masonry such as basement walls, basement roofs, foundations, terraces, balconies and pipe penetrations.

Waterproof Blue Liquid DPM
Liquid applied Damp Proof Membrane



INTELLIGENT MEMBRANES

Intelligent Membranes
Clopton Farm
Lower Road
Croydon
SG8 0EF
United Kingdom

tel: +44 (0)1223 080821

© Detail Library 2023

- Do not scale to ascertain dimensions.
- All dimensions to be checked and verified on site prior to commencement work.
- This detail is a guideline only, representing typical detailing conditions and illustrating the correct application of Intelligent Membranes products.
- It may be necessary to modify this detail to suit specific project design constraints and conditions.
- Refer to Intelligent Membranes specification for the product design action and method of application.
- These drawings are subject to the approval of all Statutory Building Control requirements and the requirements of all Statutory Authorities and Service Providers.
- These drawings are to be read in conjunction with product specifications and all other relevant documentation.
- All Intelligent Membranes products must lap on to another Intelligent Membranes product or other product to ensure airtightness and waterproofing.

Reference Number:

IM-PH-T11

Scale:

1:10

Rev:

R0

Date:

SEP 23

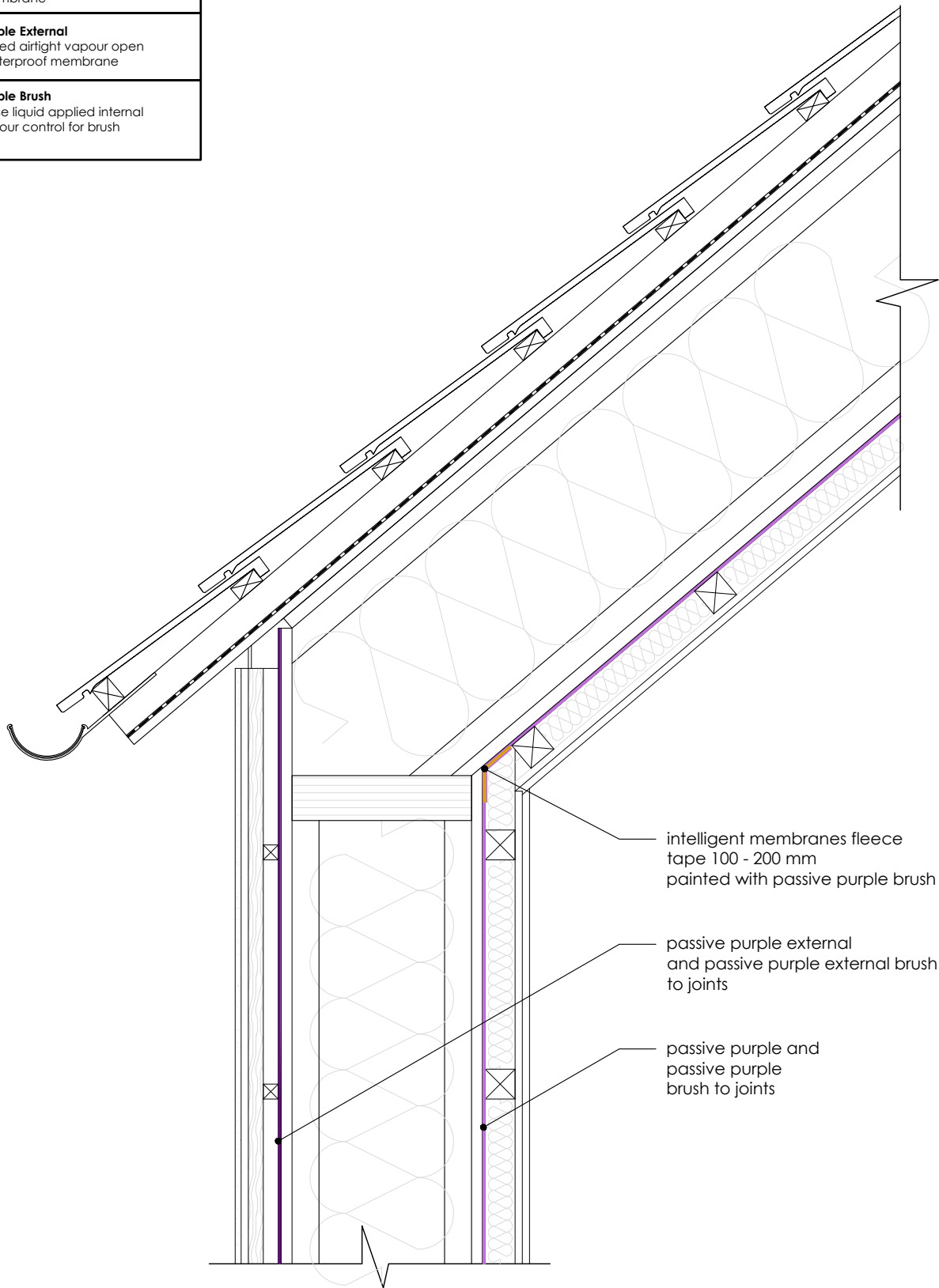
Drawing Name:

**Timber I-Beam wall
Floor wall junction**

Passive Purple
Liquid applied internal airtight vapour control membrane

Passive Purple External
Liquid applied airtight vapour open facade waterproof membrane

Passive Purple Brush
Ready to use liquid applied internal airtight vapour control for brush application



intelligent membranes fleece tape 100 - 200 mm painted with passive purple brush

passive purple external and passive purple external brush to joints

passive purple and passive purple brush to joints



INTELLIGENT MEMBRANES

Intelligent Membranes
Clopton Farm
Lower Road
Croydon
SG8 0EF
United Kingdom

tel: +44 (0)1223 080821

© Detail Library 2023

- Do not scale to ascertain dimensions.
- All dimensions to be checked and verified on site prior to commencement work.
- This detail is a guideline only, representing typical detailing conditions and illustrating the correct application of Intelligent Membranes products.
- It may be necessary to modify this detail to suit specific project design constraints and conditions.
- Refer to Intelligent Membranes specification for the product design action and method of application.
- These drawings are subject to the approval of all Statutory Building Control requirements and the requirements of all Statutory Authorities and Service Providers.
- These drawings are to be read in conjunction with product specifications and all other relevant documentation.
- All Intelligent Membranes products must lap on to another Intelligent Membranes product or other product to ensure airtightness and waterproofing.

Reference Number:

IM-PH-T12

Scale:

1:10

Rev:

R0

Date:

SEP 23

Drawing Name:

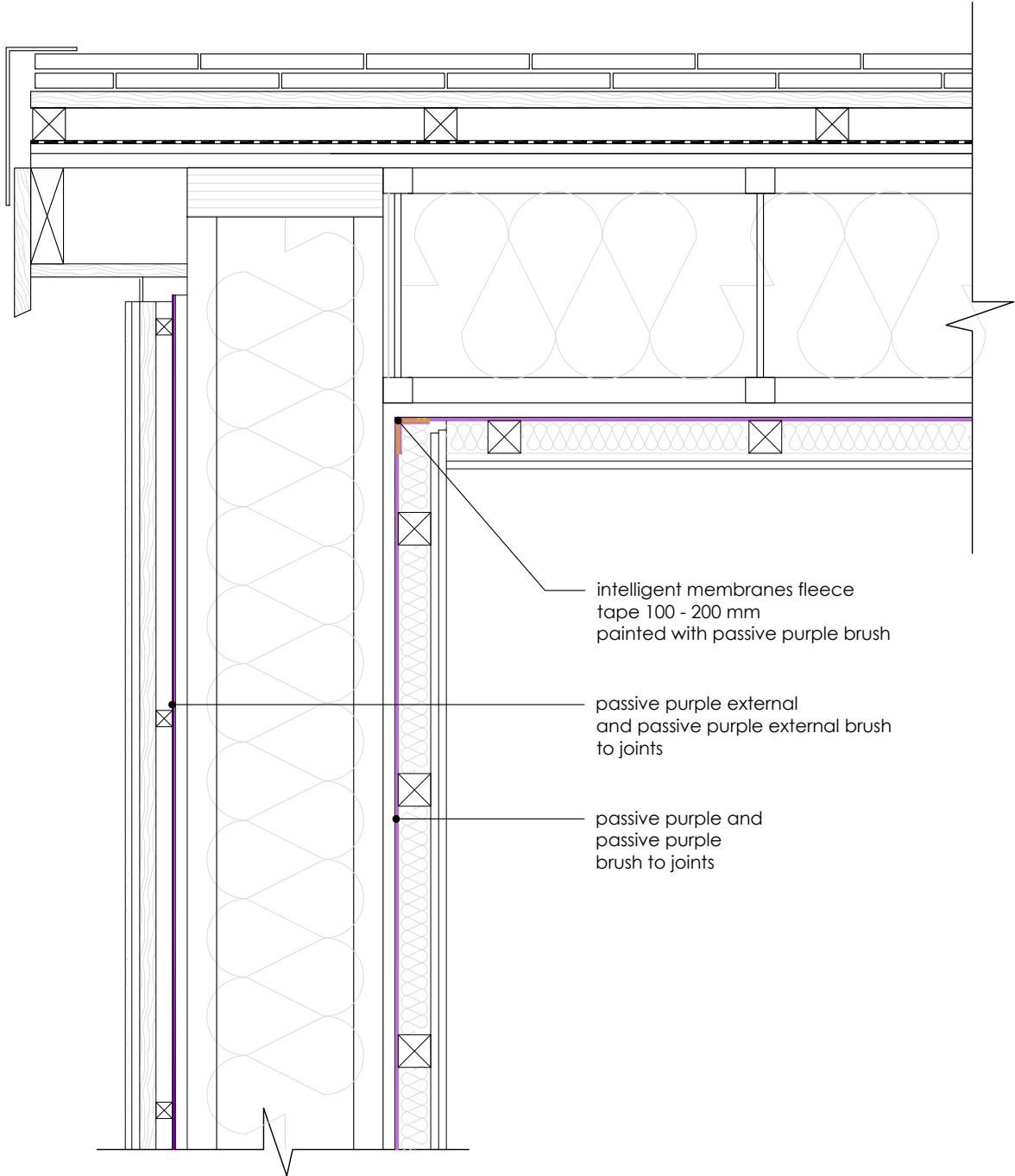
Timber I-Beam wall Wall roof junction

Passive Purple

Liquid applied internal airtight vapour control membrane

Passive Purple External

Liquid applied airtight vapour open facade waterproof membrane



INTELLIGENT MEMBRANES

Intelligent Membranes
Clopton Farm
Lower Road
Croydon
SG8 0EF
United Kingdom

tel: +44 (0)1223 080821

© Detail Library 2023

- Do not scale to ascertain dimensions.
- All dimensions to be checked and verified on site prior to commencement work.
- This detail is a guideline only, representing typical detailing conditions and illustrating the correct application of Intelligent Membranes products.
- It may be necessary to modify this detail to suit specific project design constraints and conditions.
- Refer to Intelligent Membranes specification for the product design action and method of application.
- These drawings are subject to the approval of all Statutory Building Control requirements and the requirements of all Statutory Authorities and Service Providers.
- These drawings are to be read in conjunction with product specifications and all other relevant documentation.
- All Intelligent Membranes products must lap on to another Intelligent Membranes product or other product to ensure airtightness and waterproofing.

Reference Number:

IM-PH-T13

Scale:

1:10

Rev:

R0

Date:

SEP 23

Drawing Name:

**Timber I-Beam wall
Roof verge**

Passive Purple
Liquid applied internal airtight vapour control membrane

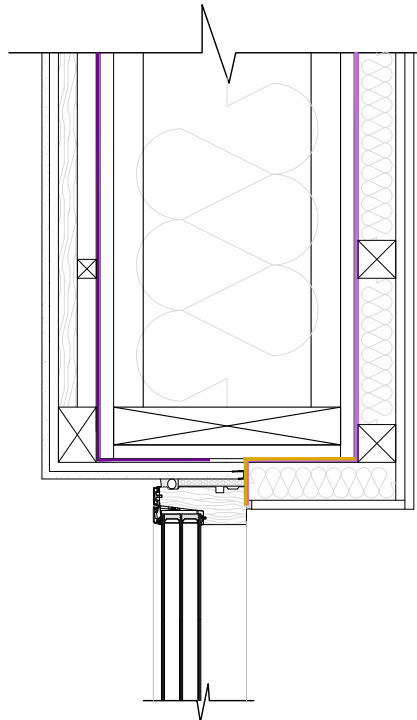
Passive Purple External
Liquid applied airtight vapour open facade waterproof membrane

Intelligent Membranes Fleece Tape
Airtightness tape for windows and connecting joints

Passive Purple Brush
Ready to use liquid applied internal airtight vapour control for brush application

the GOAT
Solvent-free waterproof coating with quick drying times. Ideal for waterproofing structures in concrete or masonry such as basement walls, basement roofs, foundations, terraces, balconies and pipe penetrations.

Waterproof Blue Liquid DPM
Liquid applied Damp Proof Membrane

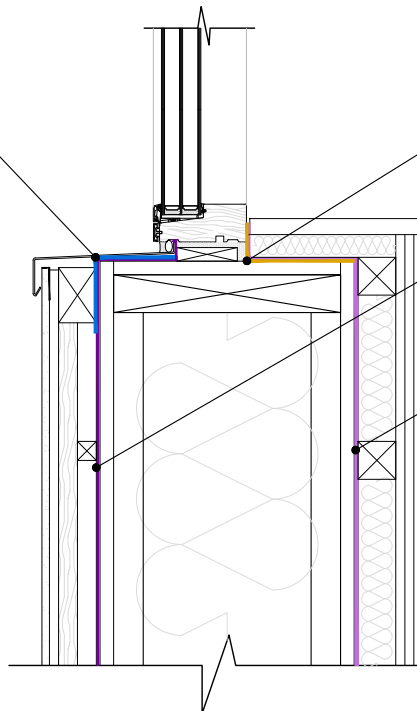


the GOAT or Waterproof Blue Liquid DPM

intelligent membranes fleece tape painted with passive purple brush

passive purple external brush to joints

passive purple and passive purple brush to joints



© Detail Library 2023

- Do not scale to ascertain dimensions.
- All dimensions to be checked and verified on site prior to commencement work.
- This detail is a guideline only, representing typical detailing conditions and illustrating the correct application of Intelligent Membranes products.
- It may be necessary to modify this detail to suit specific project design constraints and conditions.
- Refer to Intelligent Membranes specification for the product design action and method of application.
- These drawings are subject to the approval of all Statutory Building Control requirements and the requirements of all Statutory Authorities and Service Providers.
- These drawings are to be read in conjunction with product specifications and all other relevant documentation.
- All Intelligent Membranes products must lap on to another Intelligent Membranes product or other product to ensure airtightness and waterproofing.

Reference Number:

IM-PH-T14

Scale:

1:10

Rev:

R0

Date:

SEP 23

Drawing Name:

**Timber I-Beam wall
Window head and sill**



INTELLIGENT MEMBRANES

Intelligent Membranes
Clopton Farm
Lower Road
Croydon
SG8 0EF
United Kingdom

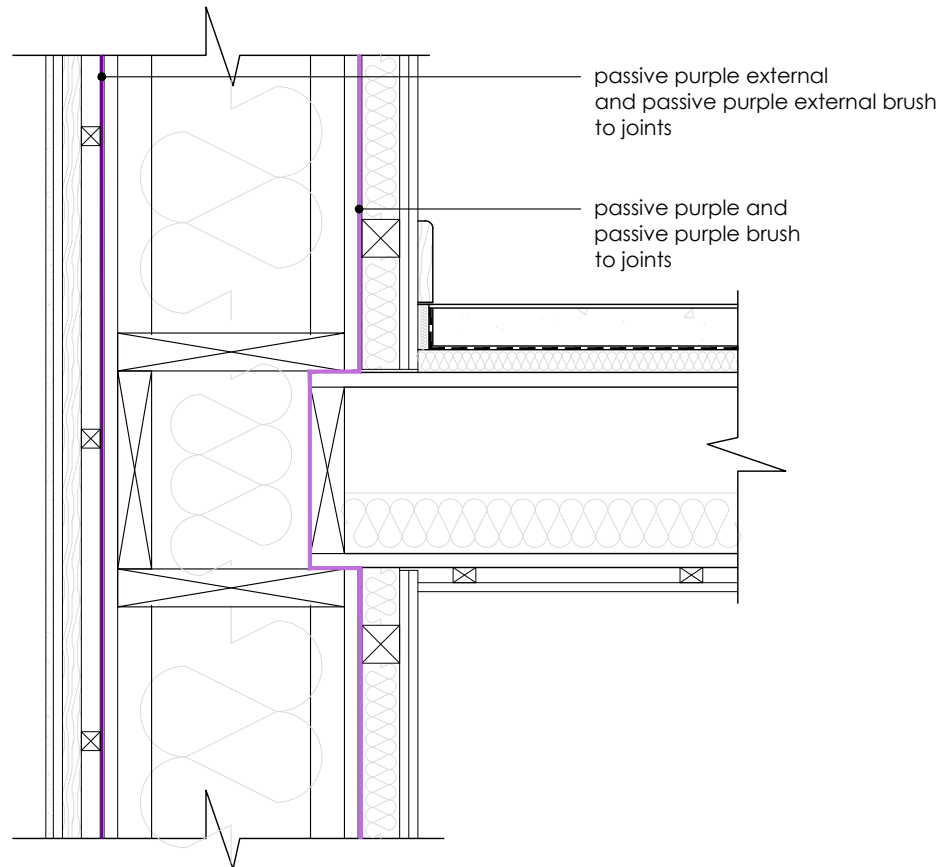
tel: +44 (0)1223 080821

Passive Purple

Liquid applied internal airtight vapour control membrane

Passive Purple External

Liquid applied airtight vapour open facade waterproof membrane

**INTELLIGENT MEMBRANES**

Intelligent Membranes
 Clopton Farm
 Lower Road
 Croydon
 SG8 0EF
 United Kingdom

tel: +44 (0)1223 080821

© Detail Library 2023

- Do not scale to ascertain dimensions.
- All dimensions to be checked and verified on site prior to commencement work.
- This detail is a guideline only, representing typical detailing conditions and illustrating the correct application of Intelligent Membranes products.
- It may be necessary to modify this detail to suit specific project design constraints and conditions.
- Refer to Intelligent Membranes specification for the product design action and method of application.
- These drawings are subject to the approval of all Statutory Building Control requirements and the requirements of all Statutory Authorities and Service Providers.
- These drawings are to be read in conjunction with product specifications and all other relevant documentation.
- All Intelligent Membranes products must lap on to another Intelligent Membranes product or other product to ensure airtightness and waterproofing.

Reference Number:

IM-PH-T16

Scale:

1:10

Rev:

R0

Date:

SEP 23

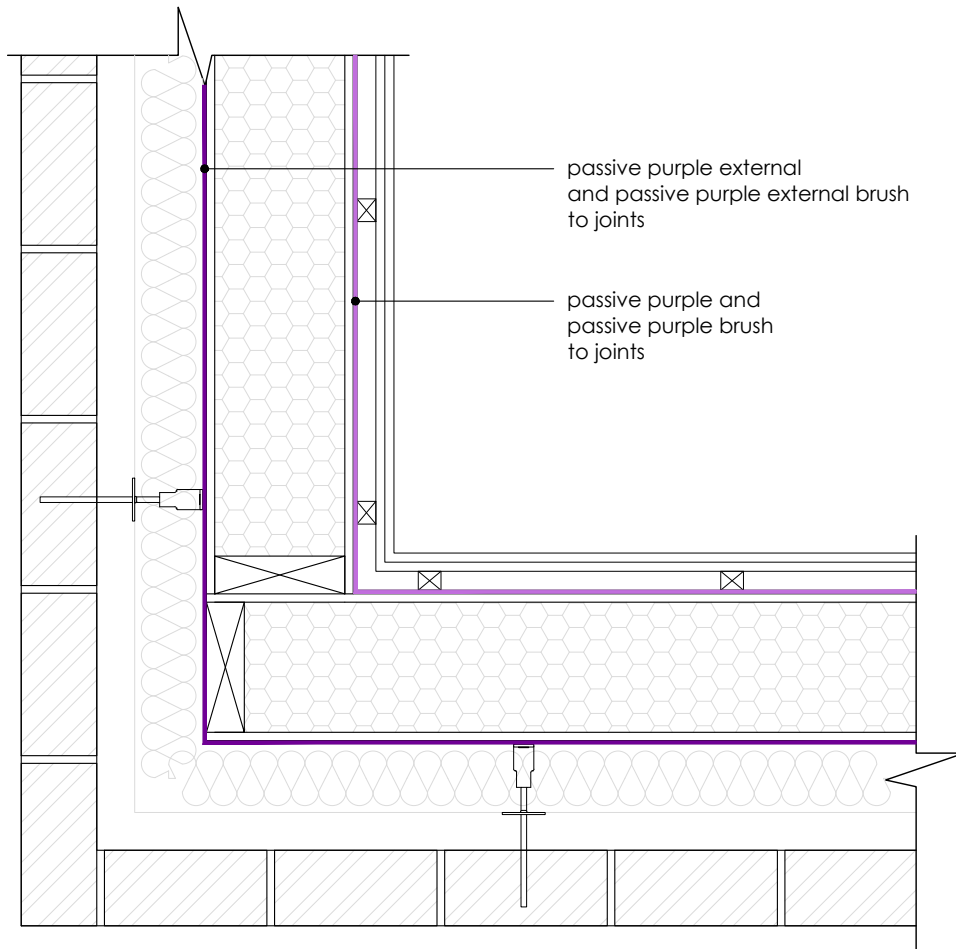
Drawing Name:

**Timber I-Beam wall
 Intermediate floor**

Passive Purple
Liquid applied internal airtight vapour control membrane

Passive Purple External
Liquid applied airtight vapour open facade waterproof membrane

Passive Purple Brush
Ready to use liquid applied internal airtight vapour control for brush application



INTELLIGENT MEMBRANES

Intelligent Membranes
Clopton Farm
Lower Road
Croydon
SG8 0EF
United Kingdom

tel: +44 (0)1223 080821

© Detail Library 2023

- Do not scale to ascertain dimensions.
- All dimensions to be checked and verified on site prior to commencement work.
- This detail is a guideline only, representing typical detailing conditions and illustrating the correct application of Intelligent Membranes products.
- It may be necessary to modify this detail to suit specific project design constraints and conditions.
- Refer to Intelligent Membranes specification for the product design action and method of application.
- These drawings are subject to the approval of all Statutory Building Control requirements and the requirements of all Statutory Authorities and Service Providers.
- These drawings are to be read in conjunction with product specifications and all other relevant documentation.
- All Intelligent Membranes products must lap on to another Intelligent Membranes product or other product to ensure airtightness and waterproofing.

Reference Number:

IM-PH-T18

Scale:

1:10

Rev:

R0

Date:

SEP 23

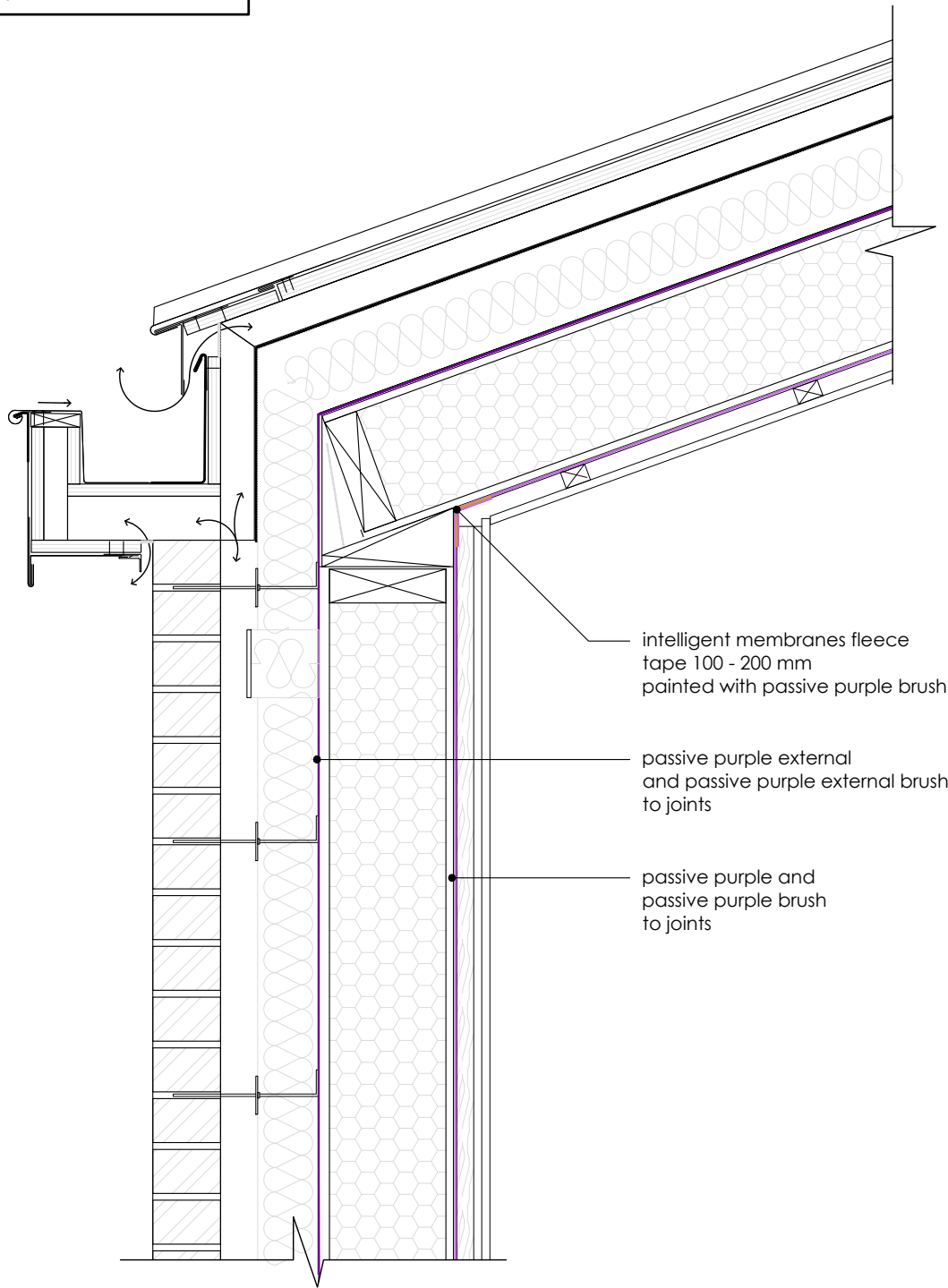
Drawing Name:

**SIP wall
External corner**

Passive Purple
Liquid applied internal airtight vapour control membrane

Passive Purple External
Liquid applied airtight vapour open facade waterproof membrane

Passive Purple Brush
Ready to use liquid applied internal airtight vapour control for brush application



INTELLIGENT MEMBRANES

Intelligent Membranes
Clopton Farm
Lower Road
Croydon
SG8 0EF
United Kingdom

tel: +44 (0)1223 080821

© Detail Library 2023

- Do not scale to ascertain dimensions.
- All dimensions to be checked and verified on site prior to commencement work.
- This detail is a guideline only, representing typical detailing conditions and illustrating the correct application of Intelligent Membranes products.
- It may be necessary to modify this detail to suit specific project design constraints and conditions.
- Refer to Intelligent Membranes specification for the product design action and method of application.
- These drawings are subject to the approval of all Statutory Building Control requirements and the requirements of all Statutory Authorities and Service Providers.
- These drawings are to be read in conjunction with product specifications and all other relevant documentation.
- All Intelligent Membranes products must lap on to another Intelligent Membranes product or other product to ensure airtightness and waterproofing.

Reference Number:

IM-PH-T20

Scale:

1:10

Rev:

R0

Date:

SEP 23

Drawing Name:

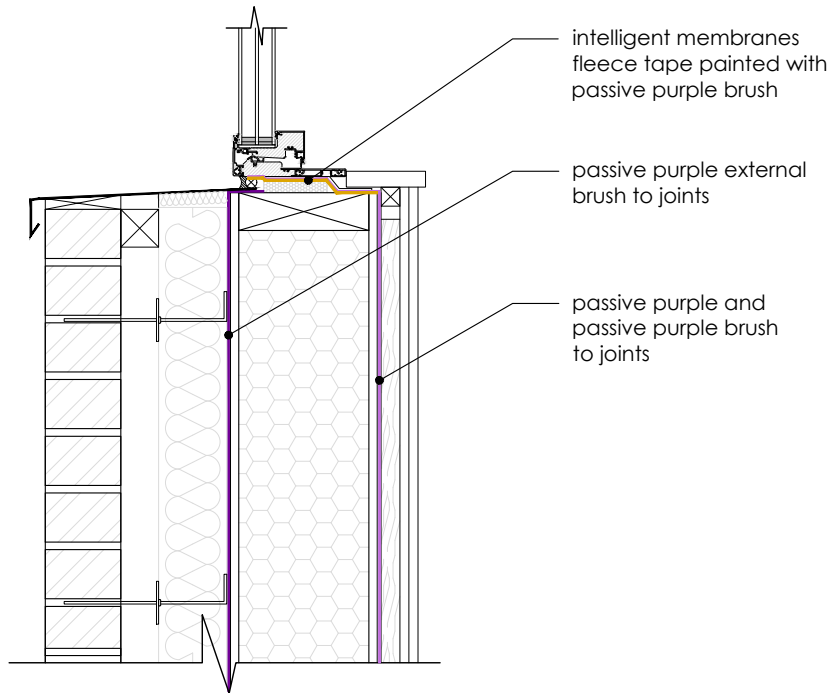
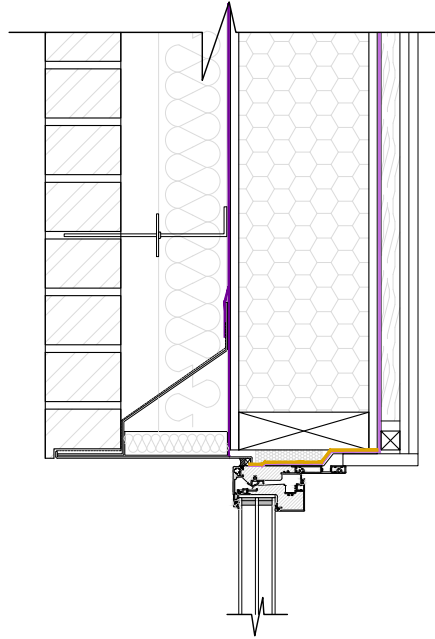
**SIP wall
Wall roof junction**

Passive Purple
Liquid applied internal airtight vapour control membrane

Passive Purple External
Liquid applied airtight vapour open facade waterproof membrane

Intelligent Membranes Fleece Tape
Airtightness tape for windows and connecting joints

Passive Purple Brush
Ready to use liquid applied internal airtight vapour control for brush application



INTELLIGENT MEMBRANES

Intelligent Membranes
Clopton Farm
Lower Road
Croydon
SG8 0EF
United Kingdom

tel: +44 (0)1223 080821

© Detail Library 2023

- Do not scale to ascertain dimensions.
- All dimensions to be checked and verified on site prior to commencement work.
- This detail is a guideline only, representing typical detailing conditions and illustrating the correct application of Intelligent Membranes products.
- It may be necessary to modify this detail to suit specific project design constraints and conditions.
- Refer to Intelligent Membranes specification for the product design action and method of application.
- These drawings are subject to the approval of all Statutory Building Control requirements and the requirements of all Statutory Authorities and Service Providers.
- These drawings are to be read in conjunction with product specifications and all other relevant documentation.
- All Intelligent Membranes products must lap on to another Intelligent Membranes product or other product to ensure airtightness and waterproofing.

Reference Number:

IM-PH-T22

Scale:

1:10

Rev:

R0

Date:

SEP 23

Drawing Name:

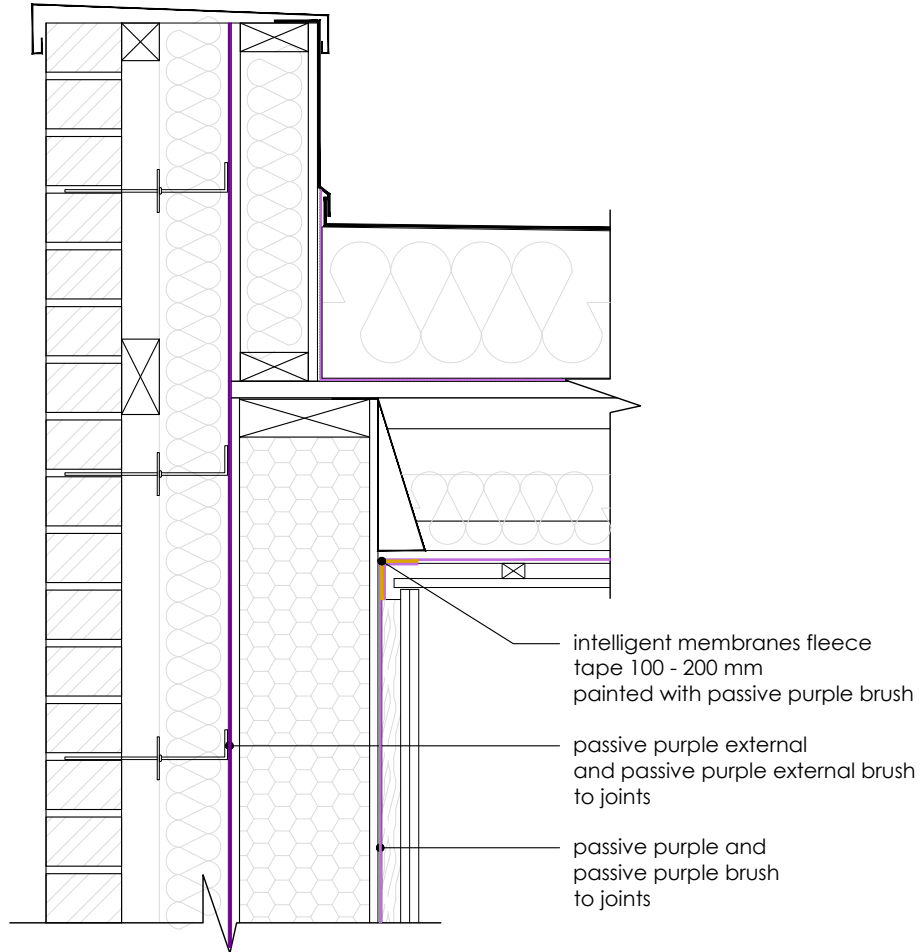
**SIP wall
Window head and sill**

Passive Purple

Liquid applied internal airtight vapour control membrane

Passive Purple External

Liquid applied airtight vapour open facade waterproof membrane



INTELLIGENT MEMBRANES

Intelligent Membranes
Clopton Farm
Lower Road
Croydon
SG8 0EF
United Kingdom

tel: +44 (0)1223 080821

© Detail Library 2023

- Do not scale to ascertain dimensions.
- All dimensions to be checked and verified on site prior to commencement work.
- This detail is a guideline only, representing typical detailing conditions and illustrating the correct application of Intelligent Membranes products.
- It may be necessary to modify this detail to suit specific project design constraints and conditions.
- Refer to Intelligent Membranes specification for the product design action and method of application.
- These drawings are subject to the approval of all Statutory Building Control requirements and the requirements of all Statutory Authorities and Service Providers.
- These drawings are to be read in conjunction with product specifications and all other relevant documentation.
- All Intelligent Membranes products must lap on to another Intelligent Membranes product or other product to ensure airtightness and waterproofing.

Reference Number:

IM-PH-T25

Scale:

1:10

Rev:

R0

Date:

SEP 23

Drawing Name:

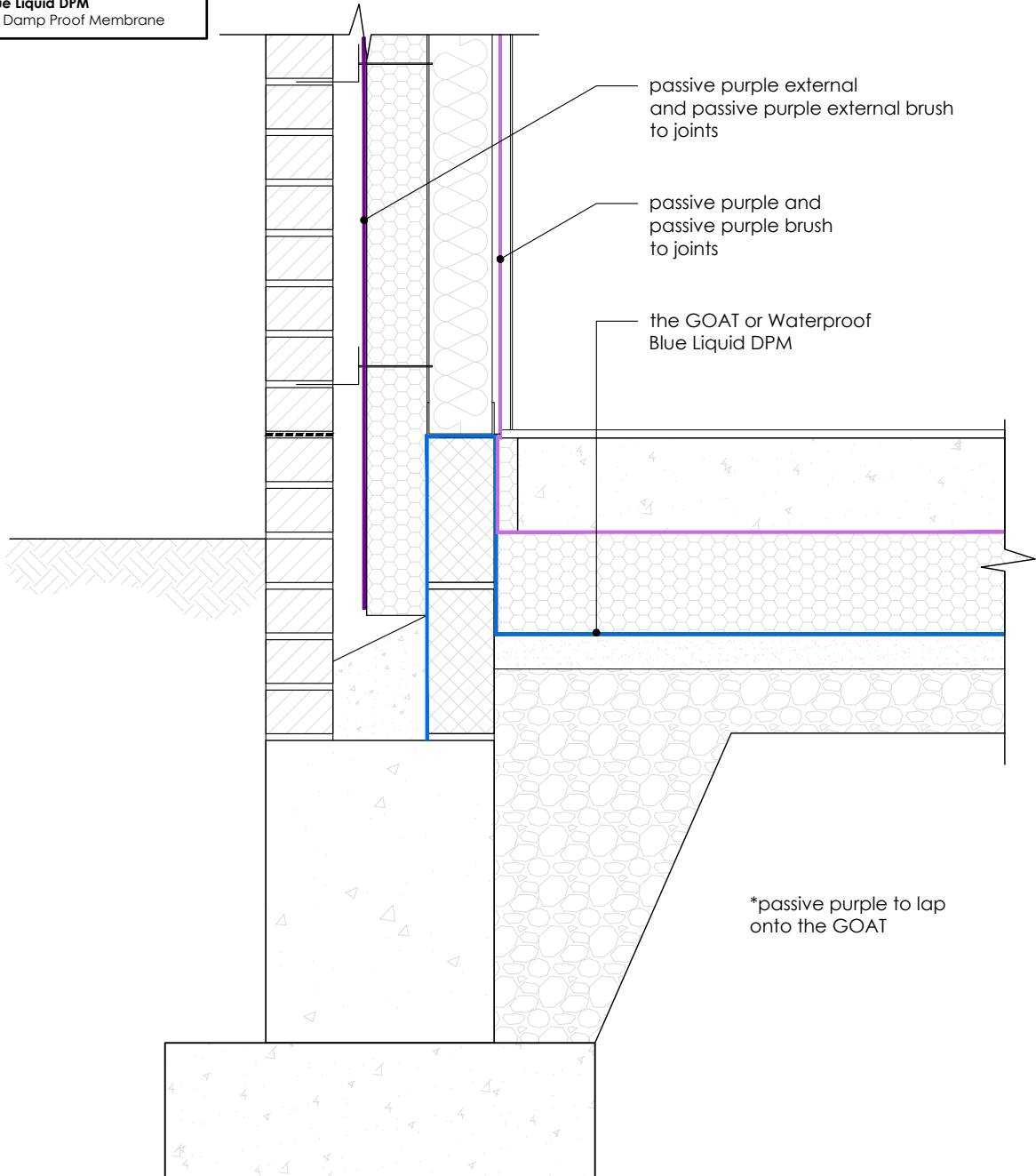
**SIP wall
Flat roof**

Passive Purple
Liquid applied internal airtight vapour control membrane

Passive Purple External
Liquid applied airtight vapour open facade waterproof membrane

the GOAT
Solvent-free waterproof coating with quick drying times. Ideal for waterproofing structures in concrete or masonry such as basement walls, basement roofs, foundations, terraces, balconies and pipe penetrations.

Waterproof Blue Liquid DPM
Liquid applied Damp Proof Membrane



INTELLIGENT MEMBRANES

Intelligent Membranes
Clopton Farm
Lower Road
Croydon
SG8 0EF
United Kingdom

tel: +44 (0)1223 080821

© Detail Library 2023

- Do not scale to ascertain dimensions.
- All dimensions to be checked and verified on site prior to commencement work.
- This detail is a guideline only, representing typical detailing conditions and illustrating the correct application of Intelligent Membranes products.
- It may be necessary to modify this detail to suit specific project design constraints and conditions.
- Refer to Intelligent Membranes specification for the product design action and method of application.
- These drawings are subject to the approval of all Statutory Building Control requirements and the requirements of all Statutory Authorities and Service Providers.
- These drawings are to be read in conjunction with product specifications and all other relevant documentation.
- All Intelligent Membranes products must lap on to another Intelligent Membranes product or other product to ensure airtightness and waterproofing.

Reference Number:

IM-S-G1

Scale:

1:10

Rev:

R0

Date:

SEP 23

Drawing Name:

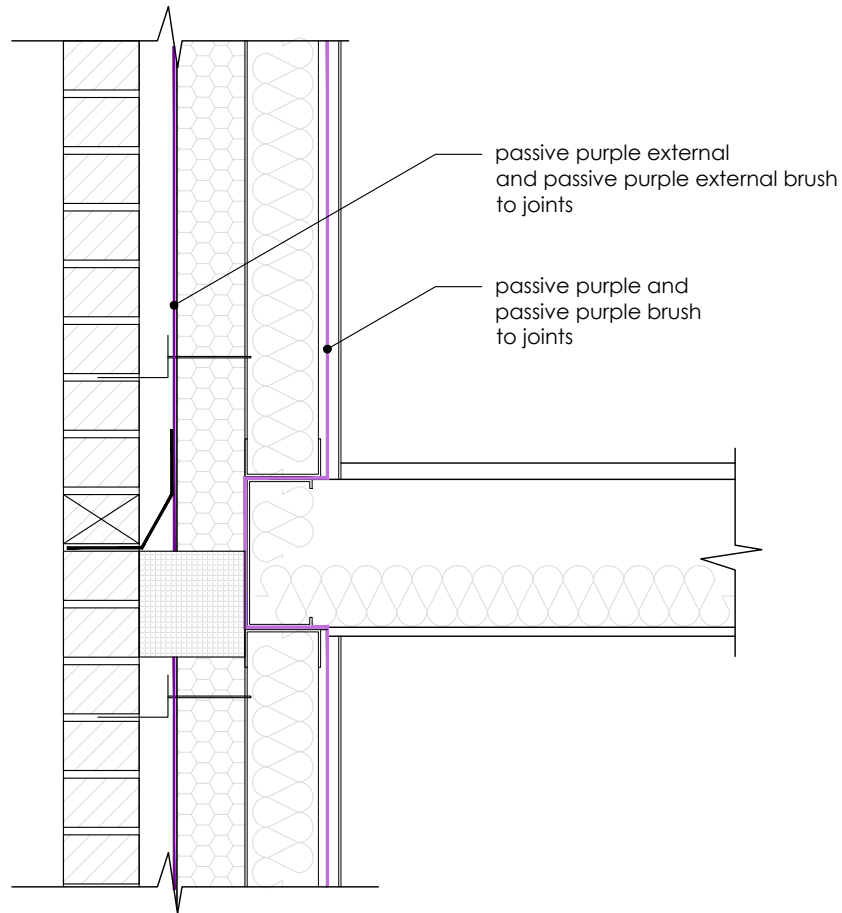
**Steel frame wall
Insulation below slab**

Passive Purple

Liquid applied internal airtight vapour control membrane

Passive Purple External

Liquid applied airtight vapour open facade waterproof membrane



INTELLIGENT MEMBRANES

Intelligent Membranes
Clopton Farm
Lower Road
Croydon
SG8 0EF
United Kingdom

tel: +44 (0)1223 080821

© Detail Library 2023

- Do not scale to ascertain dimensions.
- All dimensions to be checked and verified on site prior to commencement work.
- This detail is a guideline only, representing typical detailing conditions and illustrating the correct application of Intelligent Membranes products.
- It may be necessary to modify this detail to suit specific project design constraints and conditions.
- Refer to Intelligent Membranes specification for the product design action and method of application.
- These drawings are subject to the approval of all Statutory Building Control requirements and the requirements of all Statutory Authorities and Service Providers.
- These drawings are to be read in conjunction with product specifications and all other relevant documentation.
- All Intelligent Membranes products must lap on to another Intelligent Membranes product or other product to ensure airtightness and waterproofing.

Reference Number:

IM-S-G3

Scale:

1:10

Rev:

R0

Date:

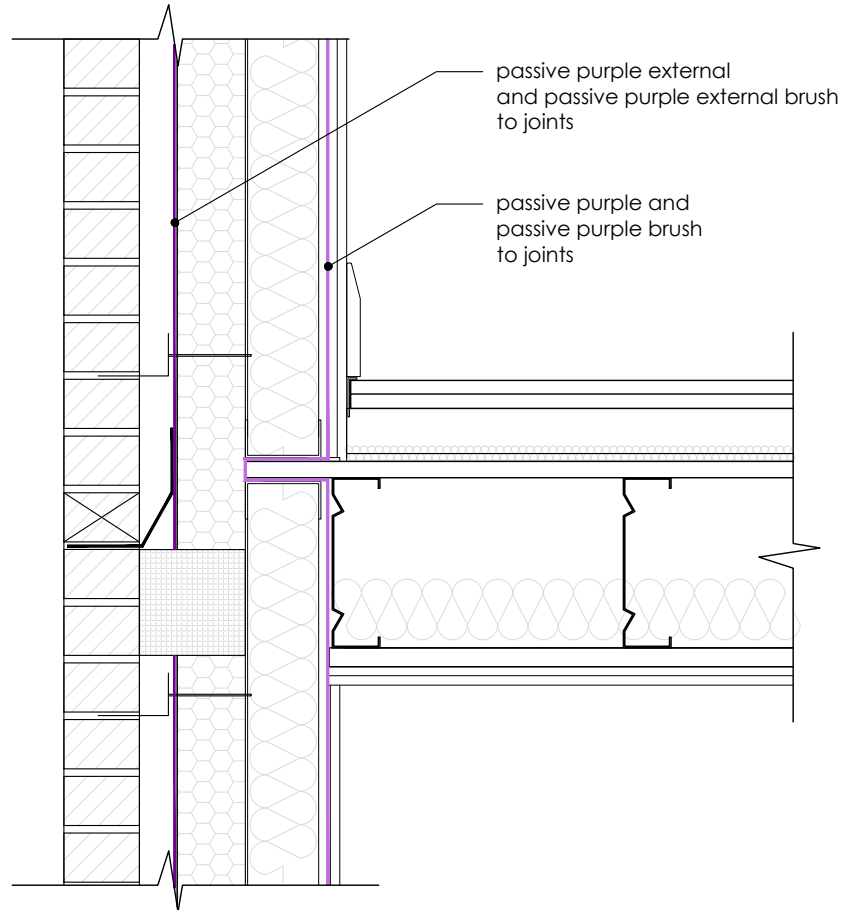
SEP 23

Drawing Name:

**Steel frame wall
Intermediate floor**

Passive Purple
Liquid applied internal airtight vapour control membrane

Passive Purple External
Liquid applied airtight vapour open facade waterproof membrane



INTELLIGENT MEMBRANES

Intelligent Membranes
Clopton Farm
Lower Road
Croydon
SG8 0EF
United Kingdom

tel: +44 (0)1223 080821

© Detail Library 2023

- Do not scale to ascertain dimensions.
- All dimensions to be checked and verified on site prior to commencement work.
- This detail is a guideline only, representing typical detailing conditions and illustrating the correct application of Intelligent Membranes products.
- It may be necessary to modify this detail to suit specific project design constraints and conditions.
- Refer to Intelligent Membranes specification for the product design action and method of application.
- These drawings are subject to the approval of all Statutory Building Control requirements and the requirements of all Statutory Authorities and Service Providers.
- These drawings are to be read in conjunction with product specifications and all other relevant documentation.
- All Intelligent Membranes products must lap on to another Intelligent Membranes product or other product to ensure airtightness and waterproofing.

Reference Number:

IM-S-G4

Scale:

1:10

Rev:

R0

Date:

SEP 23

Drawing Name:

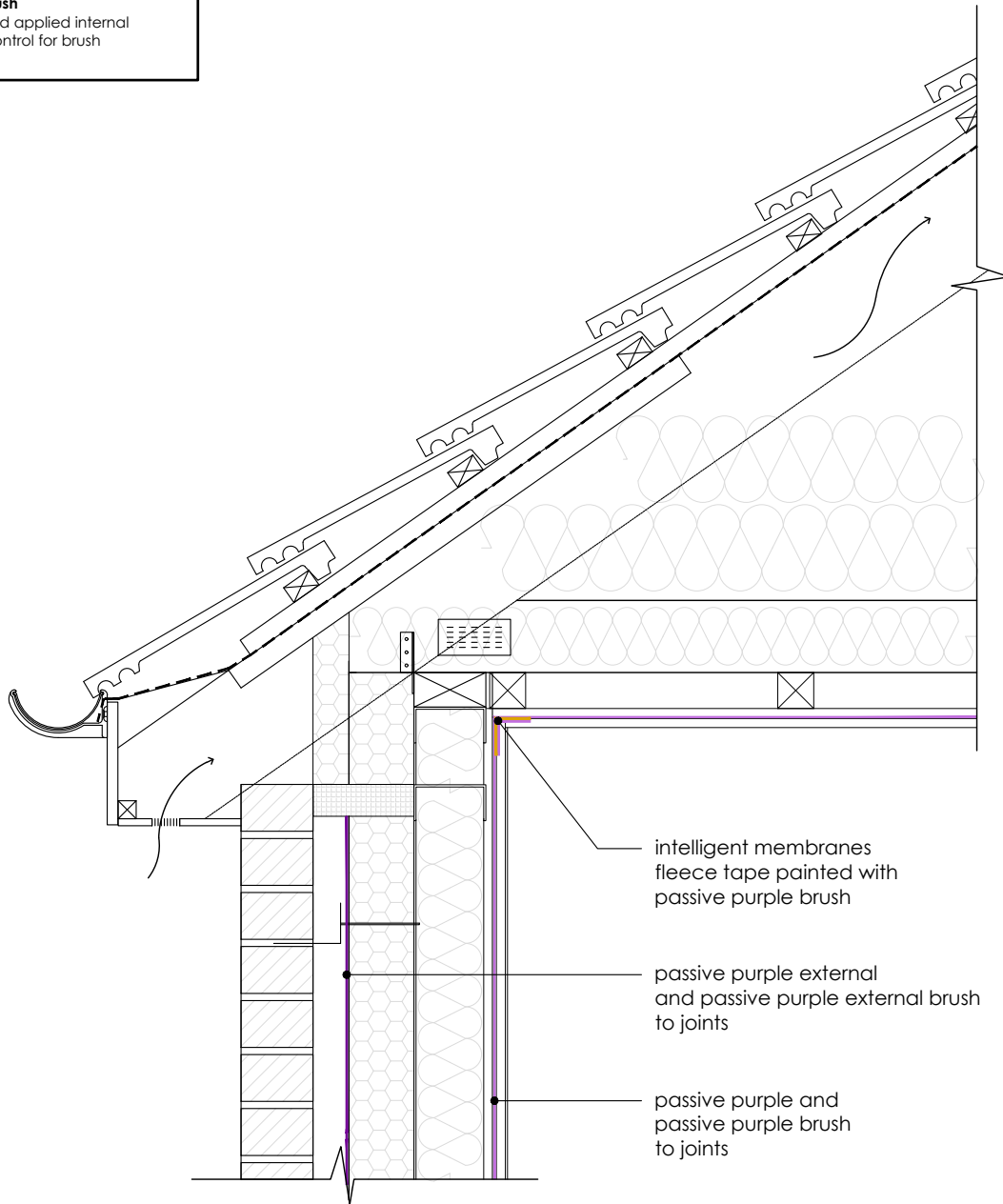
**Steel frame wall
Compartment floor**

Passive Purple
Liquid applied internal airtight vapour control membrane

Passive Purple External
Liquid applied airtight vapour open facade waterproof membrane

Intelligent Membranes Fleece Tape
Airtightness tape for windows and connecting joints

Passive Purple Brush
Ready to use liquid applied internal airtight vapour control for brush application



INTELLIGENT MEMBRANES

Intelligent Membranes
Clopton Farm
Lower Road
Croydon
SG8 0EF
United Kingdom

tel: +44 (0)1223 080821

© Detail Library 2023

- Do not scale to ascertain dimensions.
- All dimensions to be checked and verified on site prior to commencement work.
- This detail is a guideline only, representing typical detailing conditions and illustrating the correct application of Intelligent Membranes products.
- It may be necessary to modify this detail to suit specific project design constraints and conditions.
- Refer to Intelligent Membranes specification for the product design action and method of application.
- These drawings are subject to the approval of all Statutory Building Control requirements and the requirements of all Statutory Authorities and Service Providers.
- These drawings are to be read in conjunction with product specifications and all other relevant documentation.
- All Intelligent Membranes products must lap on to another Intelligent Membranes product or other product to ensure airtightness and waterproofing.

Reference Number:

IM-S-R1

Scale:

1:10

Rev:

R0

Date:

SEP 23

Drawing Name:

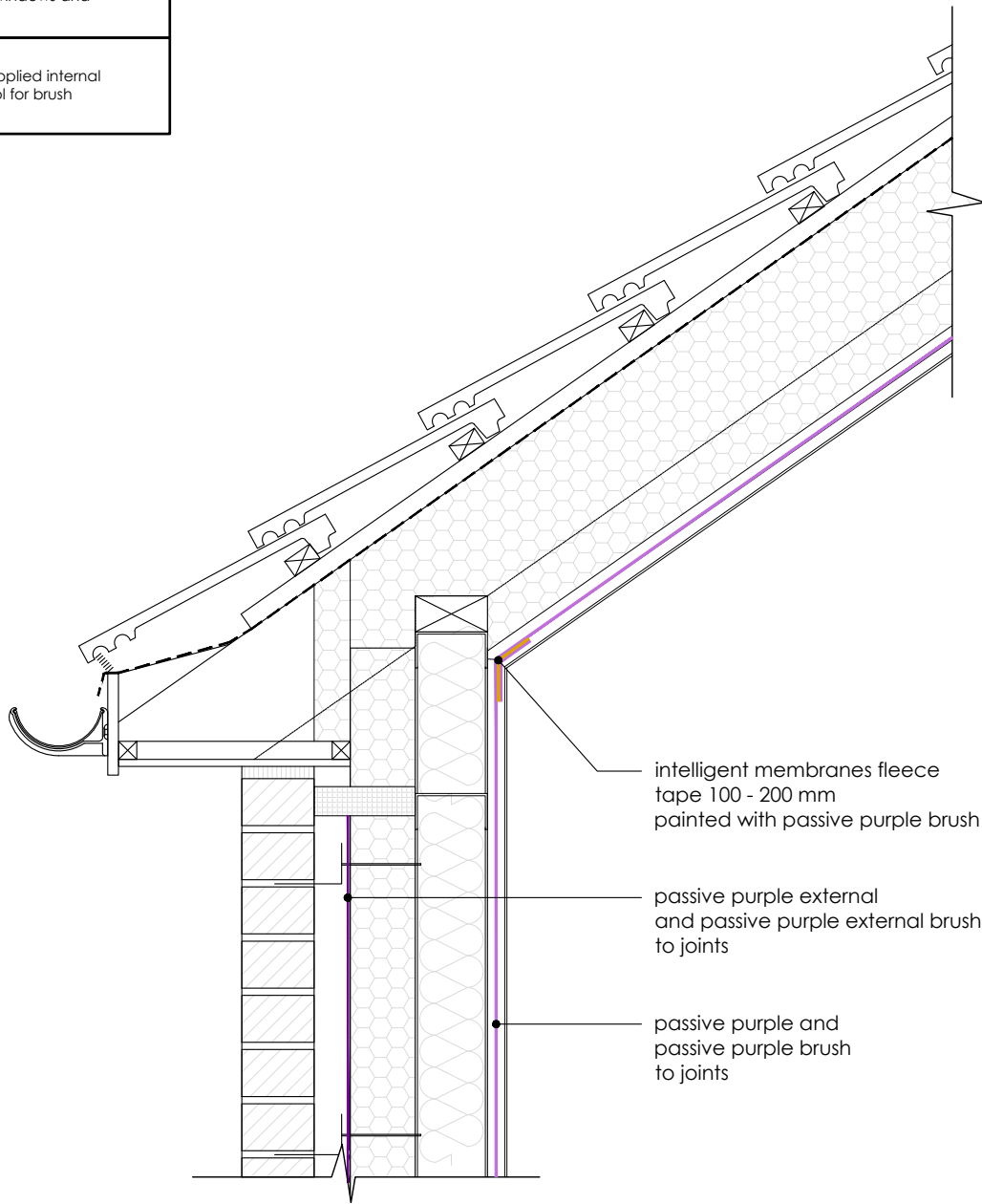
**Steel frame wall
Ventilated roof space
(cold roof)**

Passive Purple
Liquid applied internal airtight vapour control membrane

Passive Purple External
Liquid applied airtight vapour open facade waterproof membrane

Intelligent Membranes Fleece Tape
Airtightness tape for windows and connecting joints

Passive Purple Brush
Ready to use liquid applied internal airtight vapour control for brush application



intelligent membranes fleece tape 100 - 200 mm painted with passive purple brush

passive purple external and passive purple external brush to joints

passive purple and passive purple brush to joints



INTELLIGENT MEMBRANES

Intelligent Membranes
Clopton Farm
Lower Road
Croydon
SG8 0EF
United Kingdom

tel: +44 (0)1223 080821

© Detail Library 2023

- Do not scale to ascertain dimensions.
- All dimensions to be checked and verified on site prior to commencement work.
- This detail is a guideline only, representing typical detailing conditions and illustrating the correct application of Intelligent Membranes products.
- It may be necessary to modify this detail to suit specific project design constraints and conditions.
- Refer to Intelligent Membranes specification for the product design action and method of application.
- These drawings are subject to the approval of all Statutory Building Control requirements and the requirements of all Statutory Authorities and Service Providers.
- These drawings are to be read in conjunction with product specifications and all other relevant documentation.
- All Intelligent Membranes products must lap on to another Intelligent Membranes product or other product to ensure airtightness and waterproofing.

Reference Number:

IM-S-R2

Scale:

1:10

Rev:

R0

Date:

JUN 23

Drawing Name:

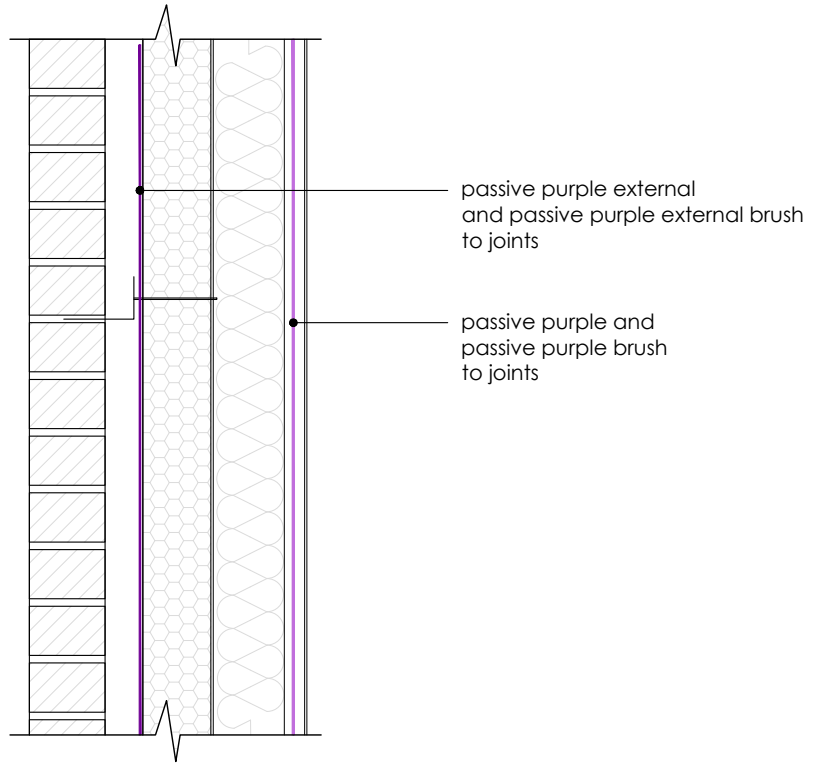
**Steel frame wall
Eaves detail -
Unventilated**

Passive Purple

Liquid applied internal airtight vapour control membrane

Passive Purple External

Liquid applied airtight vapour open facade waterproof membrane



INTELLIGENT MEMBRANES

Intelligent Membranes
Clopton Farm
Lower Road
Croydon
SG8 0EF
United Kingdom

tel: +44 (0)1223 080821

© Detail Library 2023

- Do not scale to ascertain dimensions.
- All dimensions to be checked and verified on site prior to commencement work.
- This detail is a guideline only, representing typical detailing conditions and illustrating the correct application of Intelligent Membranes products.
- It may be necessary to modify this detail to suit specific project design constraints and conditions.
- Refer to Intelligent Membranes specification for the product design action and method of application.
- These drawings are subject to the approval of all Statutory Building Control requirements and the requirements of all Statutory Authorities and Service Providers.
- These drawings are to be read in conjunction with product specifications and all other relevant documentation.
- All Intelligent Membranes products must lap on to another Intelligent Membranes product or other product to ensure airtightness and waterproofing.

Reference Number:

IM-S-W1

Scale:

1:10

Rev:

R0

Date:

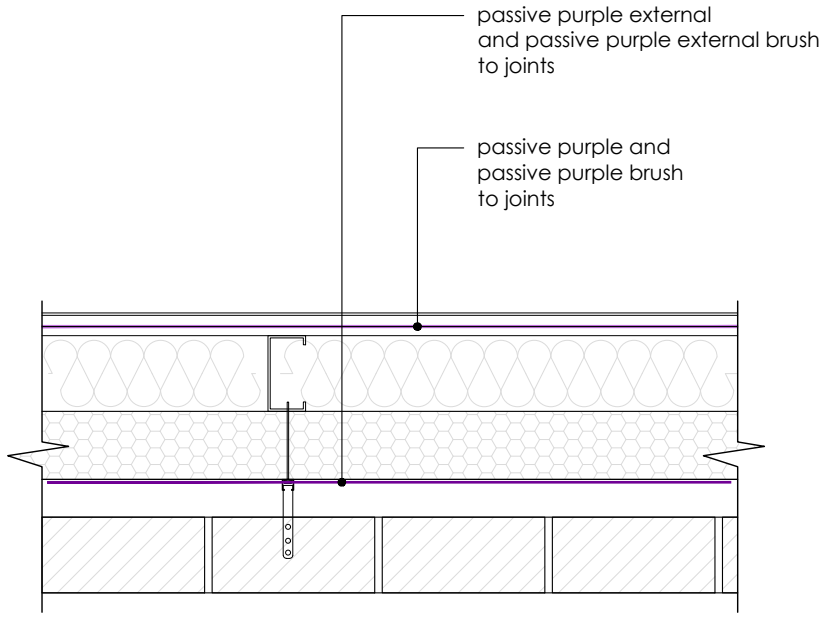
SEP 23

Drawing Name:

**Steel frame wall
Brick cladding**

Passive Purple
Liquid applied internal airtight vapour control membrane

Passive Purple External
Liquid applied airtight vapour open facade waterproof membrane



INTELLIGENT MEMBRANES

Intelligent Membranes
Clopton Farm
Lower Road
Croydon
SG8 0EF
United Kingdom

tel: +44 (0)1223 080821

© Detail Library 2023

- Do not scale to ascertain dimensions.
- All dimensions to be checked and verified on site prior to commencement work.
- This detail is a guideline only, representing typical detailing conditions and illustrating the correct application of Intelligent Membranes products.
- It may be necessary to modify this detail to suit specific project design constraints and conditions.
- Refer to Intelligent Membranes specification for the product design action and method of application.
- These drawings are subject to the approval of all Statutory Building Control requirements and the requirements of all Statutory Authorities and Service Providers.
- These drawings are to be read in conjunction with product specifications and all other relevant documentation.
- All Intelligent Membranes products must lap on to another Intelligent Membranes product or other product to ensure airtightness and waterproofing.

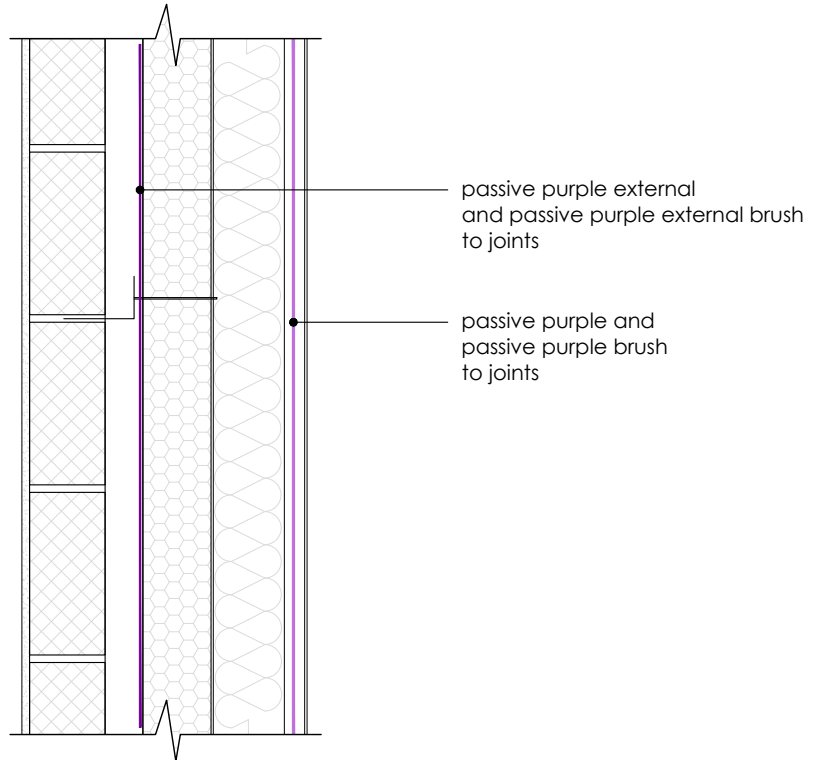
Reference Number:
IM-S-W2

Scale: 1:10	Rev: R0	Date: SEP 23
-----------------------	-------------------	------------------------

Drawing Name:
**Steel frame wall
Brick cladding
Plan view**

Passive Purple
Liquid applied internal airtight vapour control membrane

Passive Purple External
Liquid applied airtight vapour open facade waterproof membrane



INTELLIGENT MEMBRANES

Intelligent Membranes
Clopton Farm
Lower Road
Croydon
SG8 0EF
United Kingdom

tel: +44 (0)1223 080821

© Detail Library 2023

- Do not scale to ascertain dimensions.
- All dimensions to be checked and verified on site prior to commencement work.
- This detail is a guideline only, representing typical detailing conditions and illustrating the correct application of Intelligent Membranes products.
- It may be necessary to modify this detail to suit specific project design constraints and conditions.
- Refer to Intelligent Membranes specification for the product design action and method of application.
- These drawings are subject to the approval of all Statutory Building Control requirements and the requirements of all Statutory Authorities and Service Providers.
- These drawings are to be read in conjunction with product specifications and all other relevant documentation.
- All Intelligent Membranes products must lap on to another Intelligent Membranes product or other product to ensure airtightness and waterproofing.

Reference Number:

IM-S-W3

Scale:

1:10

Rev:

R0

Date:

SEP 23

Drawing Name:

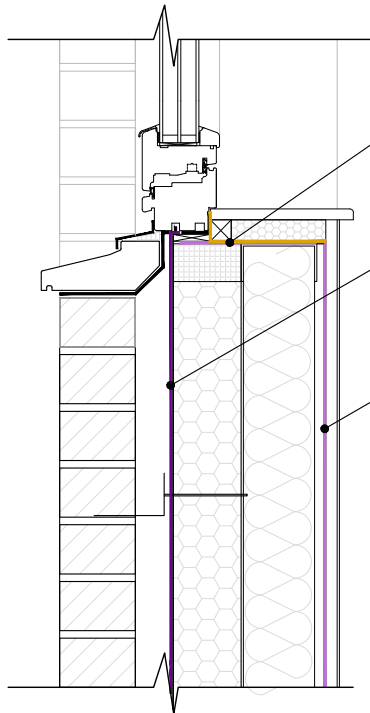
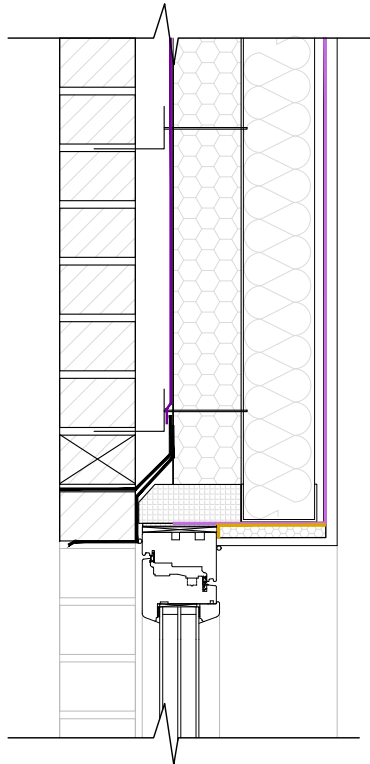
**Steel frame wall
Rendered blockwork**

Passive Purple
Liquid applied internal airtight vapour control membrane

Passive Purple External
Liquid applied airtight vapour open facade waterproof membrane

Intelligent Membranes Fleece Tape
Airtightness tape for windows and connecting joints

Passive Purple Brush
Ready to use liquid applied internal airtight vapour control for brush application



intelligent membranes fleece tape painted with passive purple brush

passive purple external brush to joints

passive purple and passive purple brush to joints



INTELLIGENT MEMBRANES

Intelligent Membranes
Clopton Farm
Lower Road
Croydon
SG8 0EF
United Kingdom

tel: +44 (0)1223 080821

© Detail Library 2023

- Do not scale to ascertain dimensions.
- All dimensions to be checked and verified on site prior to commencement work.
- This detail is a guideline only, representing typical detailing conditions and illustrating the correct application of Intelligent Membranes products.
- It may be necessary to modify this detail to suit specific project design constraints and conditions.
- Refer to Intelligent Membranes specification for the product design action and method of application.
- These drawings are subject to the approval of all Statutory Building Control requirements and the requirements of all Statutory Authorities and Service Providers.
- These drawings are to be read in conjunction with product specifications and all other relevant documentation.
- All Intelligent Membranes products must lap on to another Intelligent Membranes product or other product to ensure airtightness and waterproofing.

Reference Number:

IM-S-W4

Scale:

1:10

Rev:

R0

Date:

SEP 23

Drawing Name:

**Steel frame wall
Window head and cill
Brick cladding**