

# PASSIVE PURPLE

— AIRTIGHT LIQUID VAPOUR CONTROL —

**STANDARD DETAILS**

# PASSIVE PURPLE

## Why use us? The Passive low down!

The wall/ceiling connections also need to be made airtight, certainly when the connections are made of two different types of construction materials such as red brick/concrete or steel/concrete. Different construction materials react differently to changes in humidity, temperature and move at different rates which can lead to small cracks in plaster or another type if finishing, and so creating air leaks that will cause the energy performance of your building to suffer potentially opening The gateway for damp and mould to appear.

For these wall/ceiling connections, both products can be used; Passive Purple which is sprayed with an airless paint spray device or Passive Purple brush which is applied by brush. If you don't have an airless sprayer but would still wish to install Passive Purple your self don't worry we have a roller version for you, it may take longer but it still gets the job done.

## 2. Envelope Penetrations

Pipe and wire penetrations can be the downfall of any airtightness testing. Passive Purple and Passive Purple Brush is applied around objects and penetrates any surface to the external envelope sealing where most tapes and membranes fail.

Before you apply Passive Purple/Passive Purple Brush, first apply polyurethane foam around any penetrations; after hardening, remove the excessive foam, and apply generous amount of Passive Purple Brush with a flat paintbrush; in all cases, apply a sufficient, well covering layer to guarantee airtightness.

## 3. Window/Door Reveals

Passive Purple can be applied (and is tested) on different construction materials such as concrete, brick, wood, PVC, aluminium, polyurethane foam and with a coat of Passive Purple, the whole window/door reveal can be made airtight. Working method; cut off the excess of polyurethane foam, and apply Passive Purple Brush.

## Now we know what you're thinking, is it a nasty chemical?

Well, no!! Passive Purple is a VOC FREE water based product. So its completely free of any nasty chemicals or fumes... also as a water based product, cleaning your paintbrushes and airless spray device is an easy, no mess task.

Passive Purple adheres to any form of construction allowing you to achieve maximum results for your desired goal. Once dry Passive Purple forms an extremely tough yet flexible polymer membrane allowing it to move with The building settlement, whilst at the same time being super effective against impact damage, also eliminating the inevitable rips, tears, unstuck tapes, staple holes and large number of repairs you would expect to find on the classic paper membranes. Intelligent Membranes have eradicated the need for paper, tapes and staples which eradicates all the problems that come with it i.e. labour time, large quantity of damage repairs and waste material, effectively saving you money as well as achieving your goal without the worry of failure.

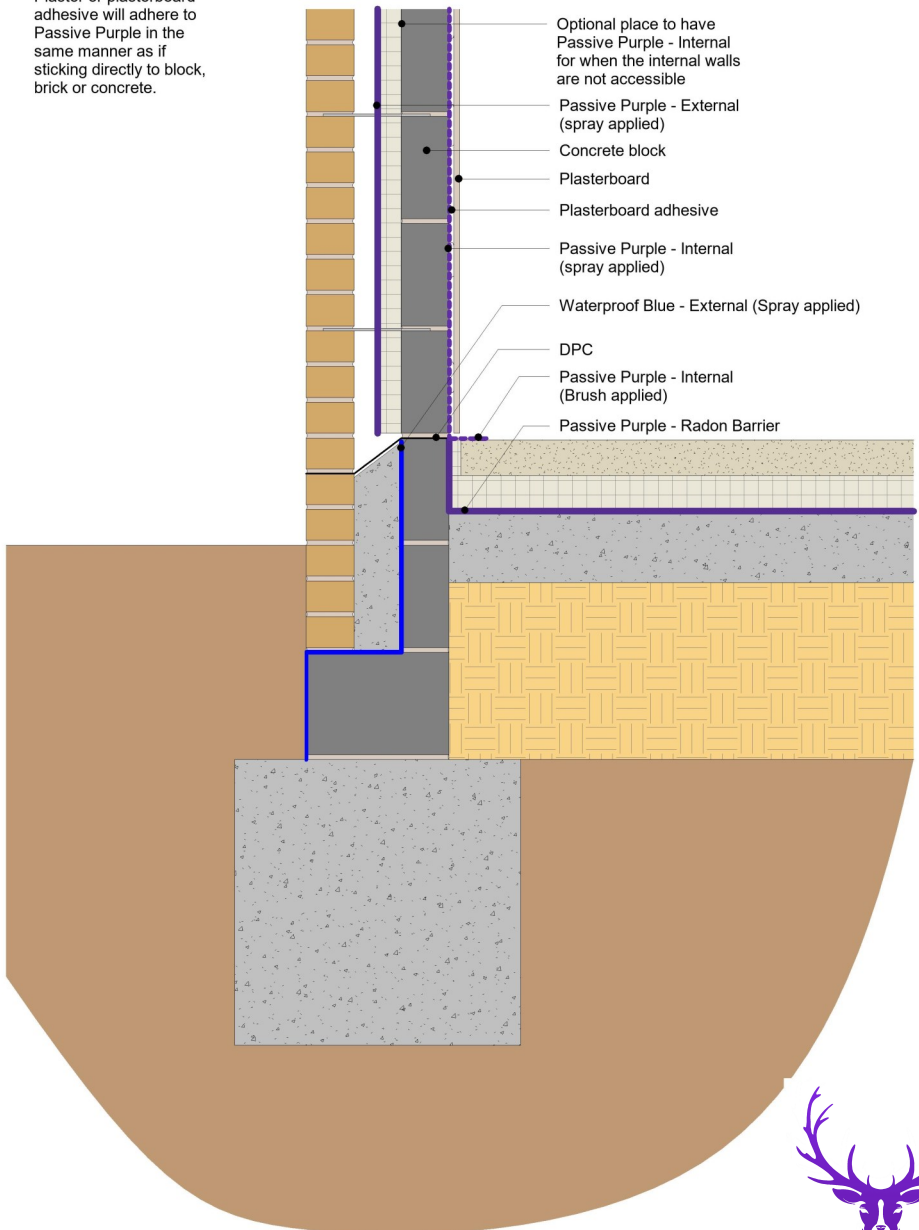
## Envelope areas

Passive Purple Liquid Airtight Vapour Control Membrane is an airtight coating which is spray applied with an airless spray device on all areas of an external envelope of a building including them difficult connection floor, wall, roof and joist areas. As long as Passive Purple is used on the warm side of the insulation Passive Purple can be applied to either face of the external envelope.

The material/substrate to have Passive Purple applied on must be dust free, solid and closed before starting the application. A closed surface implies that holes and joists need to be closed beforehand: large holes and joints (>5mm) can be closed with a fast setting cement based on products or polyurethane foam, small holes and joints (2-5mm) can be closed with Passive Purple Liquid Brush, this is a much thicker (paintbrush applied version of Passive Purple). After these preparations, Passive Purple can be sprayed with an airless paint spray device; this fast application method allows a single operative to apply up to 300 m2 per day. For small projects, such as private houses, Passive Purple Brush can be used with a flat paintbrush. In this case, and airless spray device is not needed.

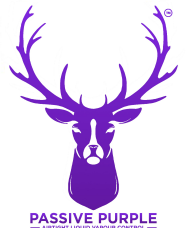
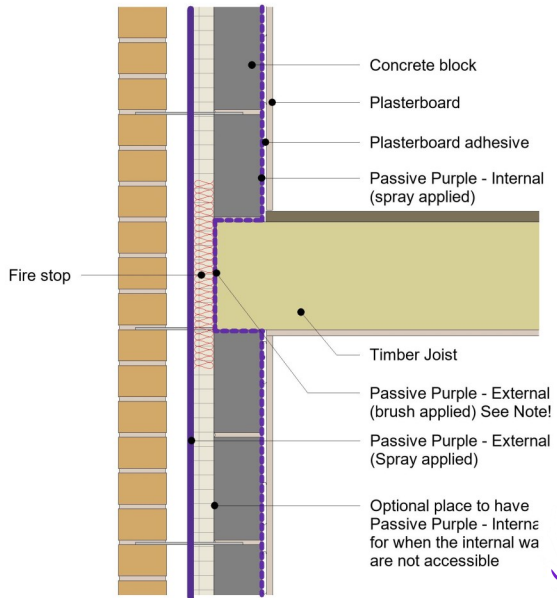
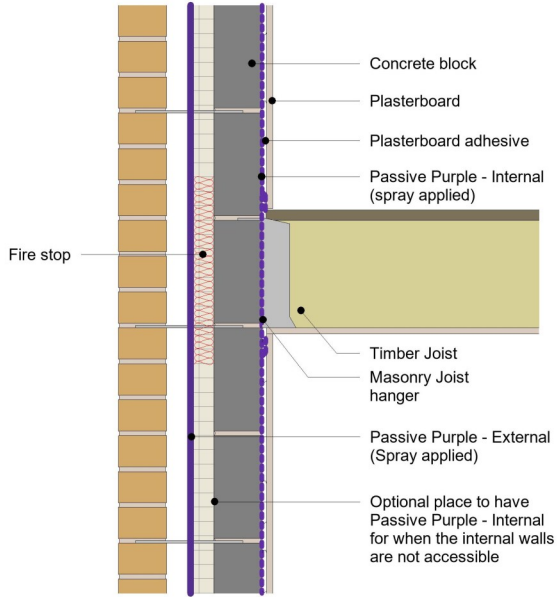
Note:

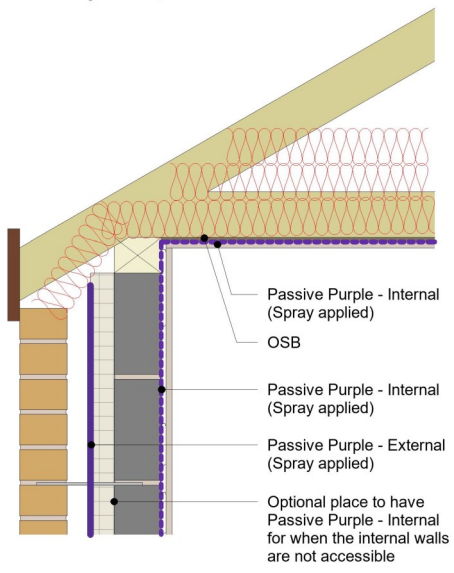
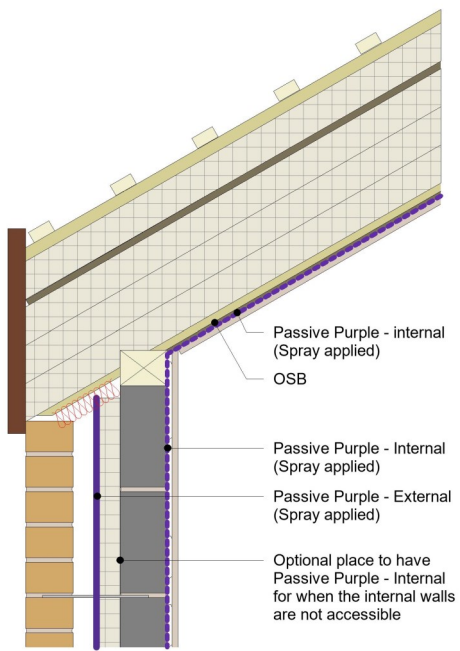
Plaster or plasterboard adhesive will adhere to Passive Purple in the same manner as if sticking directly to block, brick or concrete.



Note:

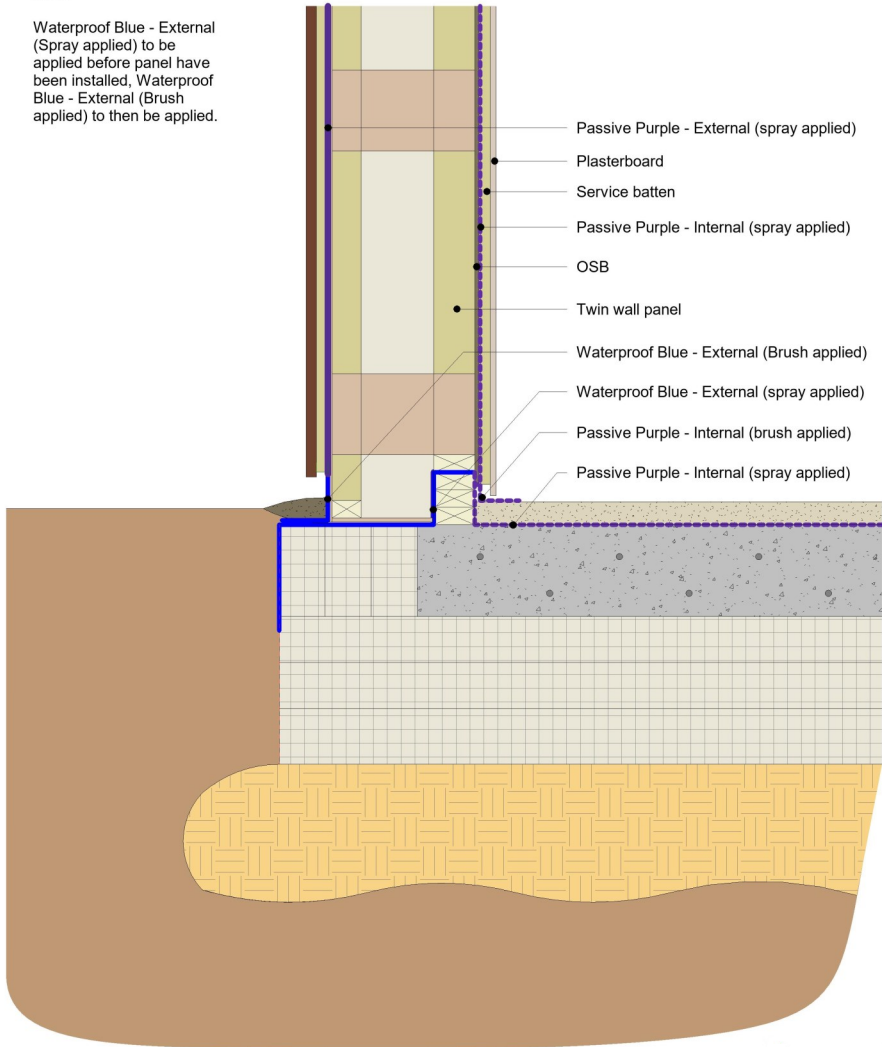
Passive Purple - Internal (brush applied) to be painted onto the ends of joists or beams that breach the wall build up, further application around the connection is required to achieve airtightness.





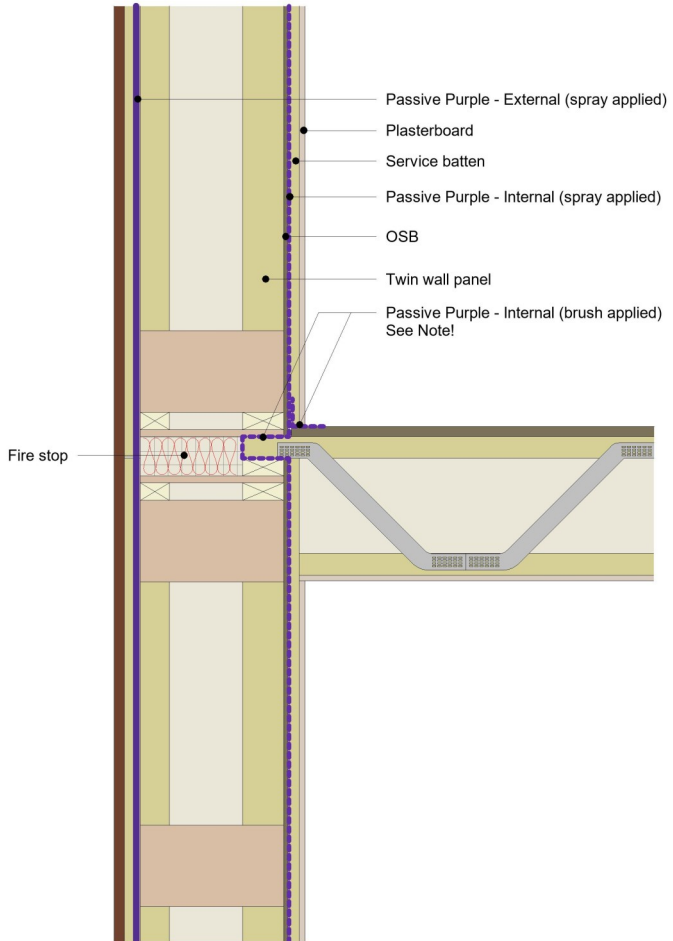
Note:

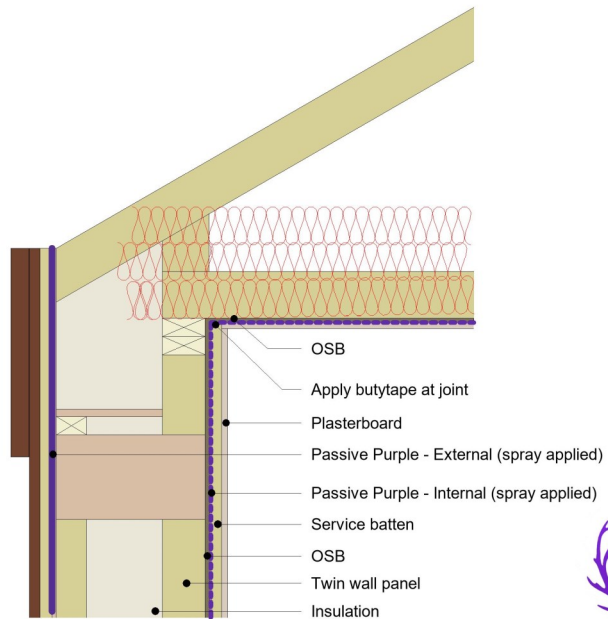
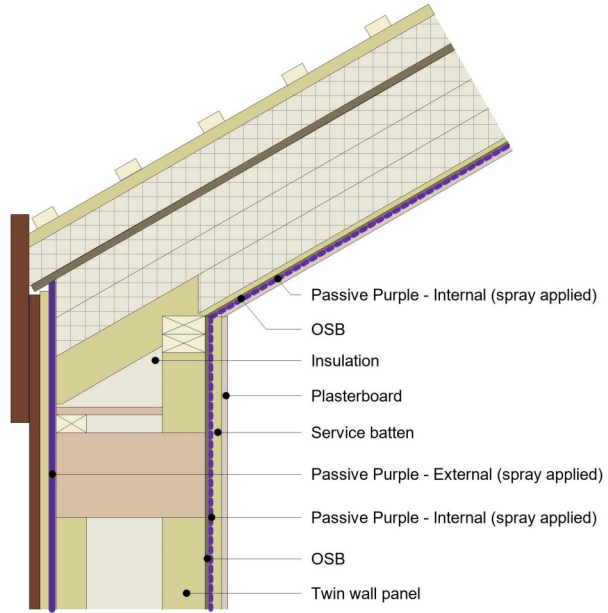
Waterproof Blue - External (Spray applied) to be applied before panel have been installed, Waterproof Blue - External (Brush applied) to then be applied.



Note:

Passive Purple - Internal (brush applied) to be painted onto the ends of joists or beams that breach the wall build up. further application around the connection is required to achieve airtightness.

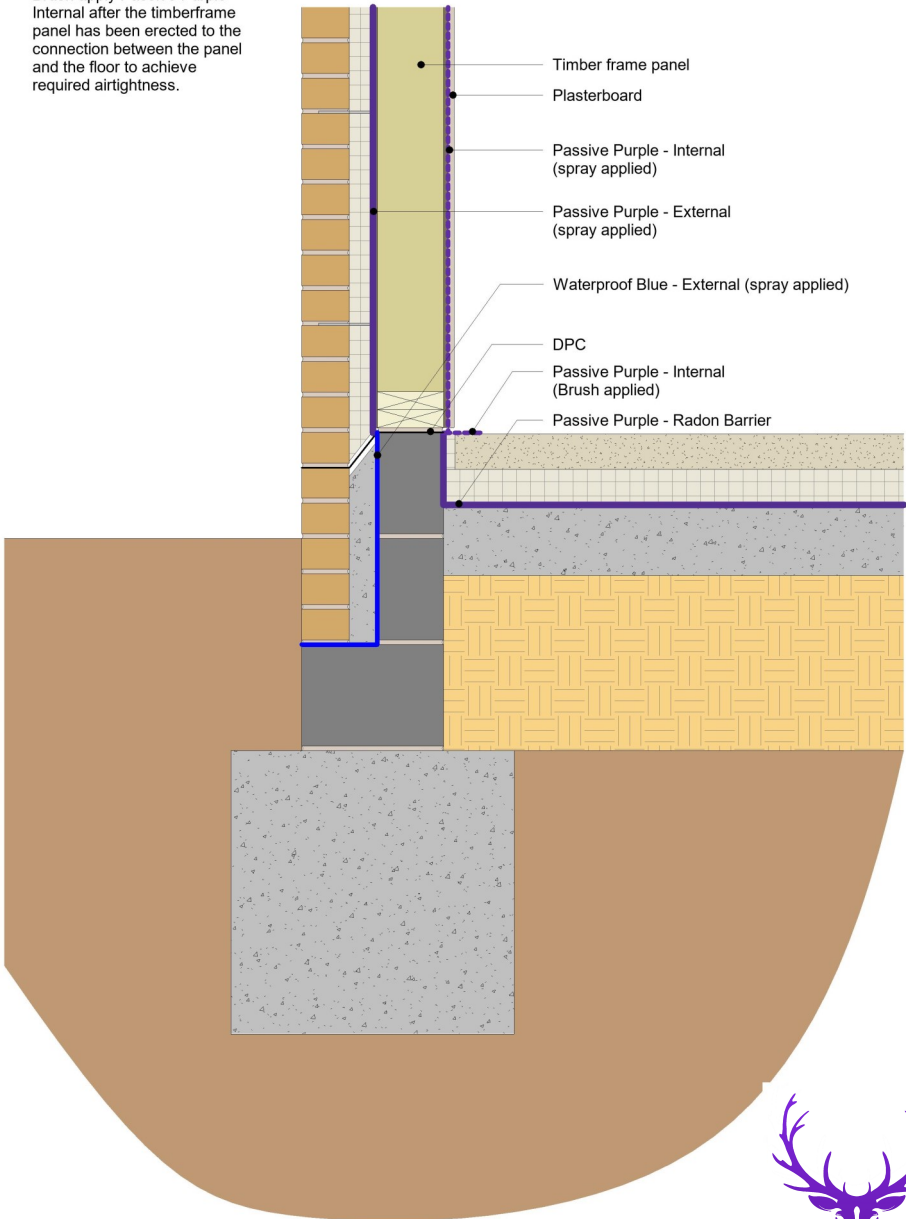






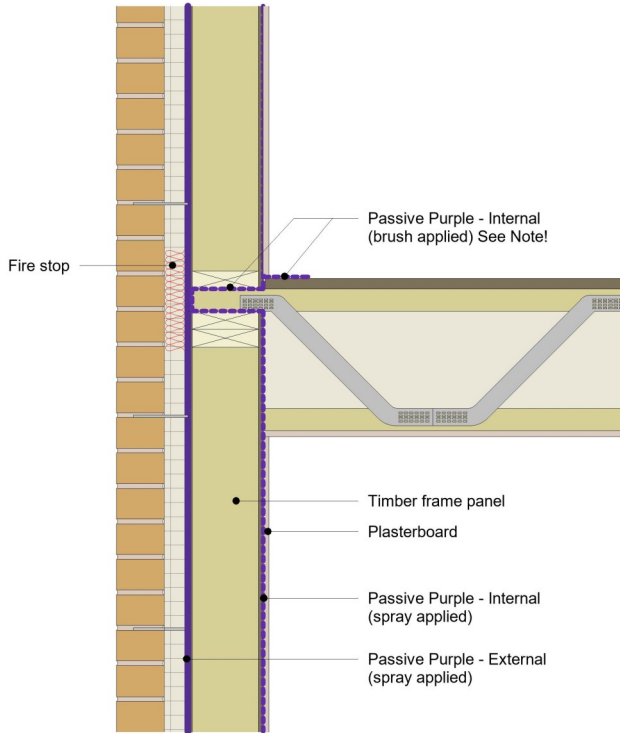
Note:

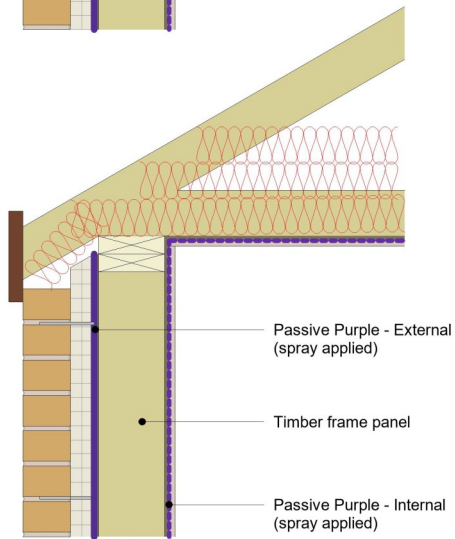
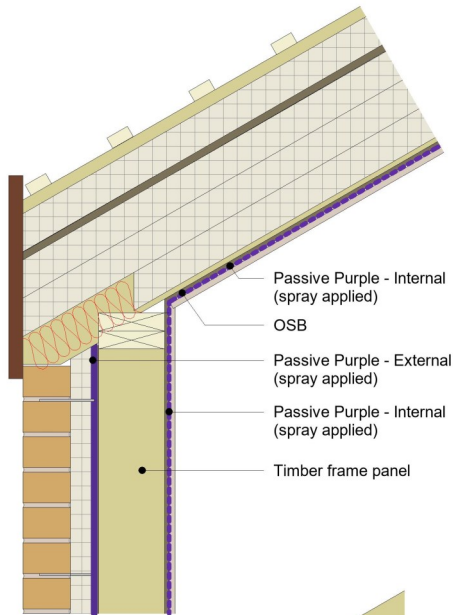
Brush apply Passive Purple - Internal after the timberframe panel has been erected to the connection between the panel and the floor to achieve required airtightness.



Note:

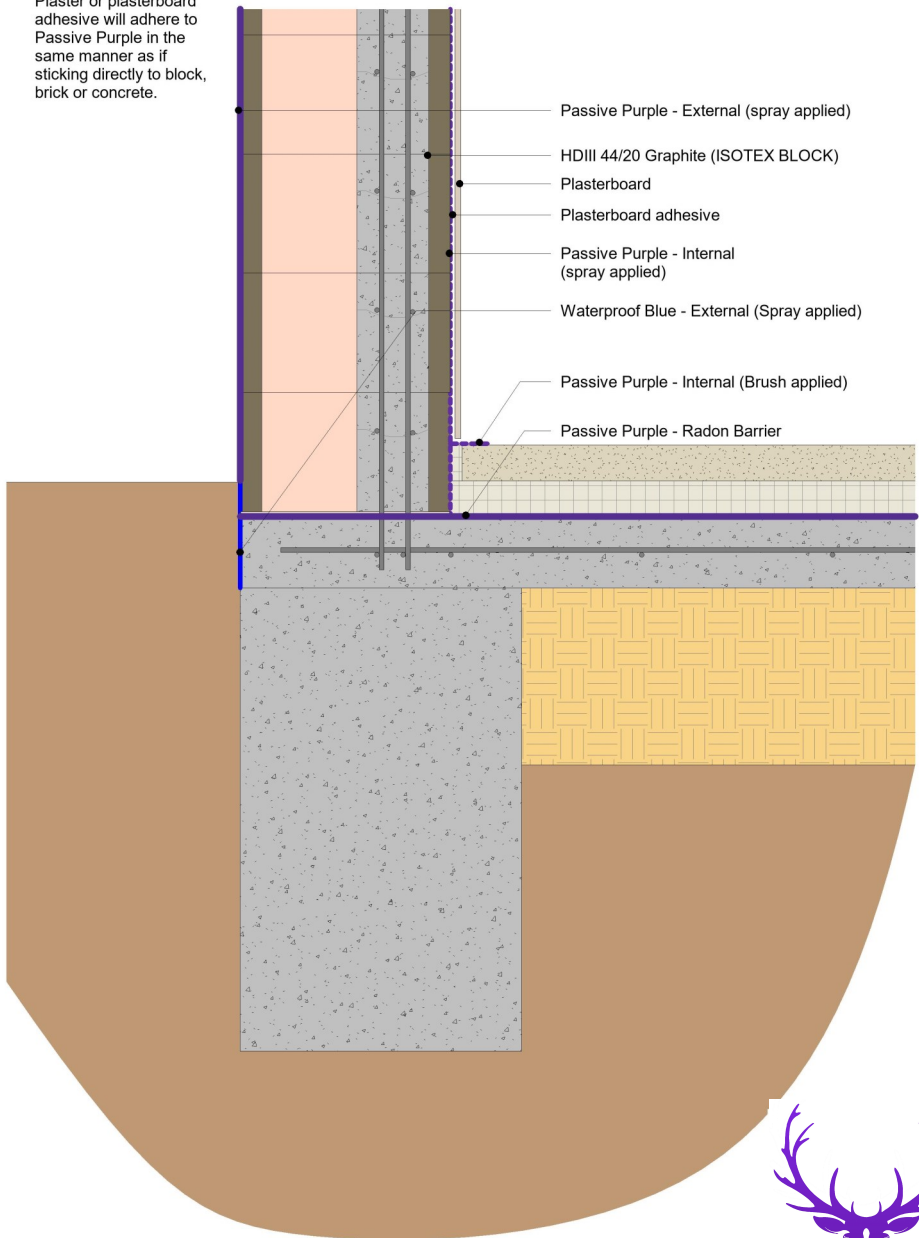
Passive Purple - Internal (brush applied) to be painted onto the ends of joists or beams that breach the wall build up. further application around the connection is required to achieve airtightness.

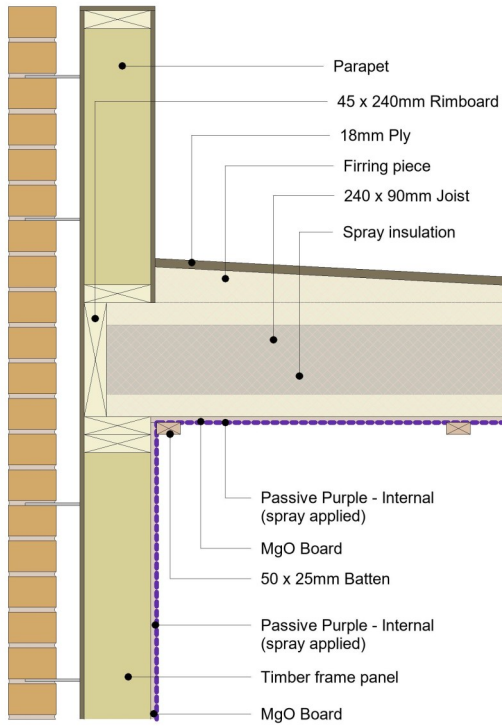




Note:

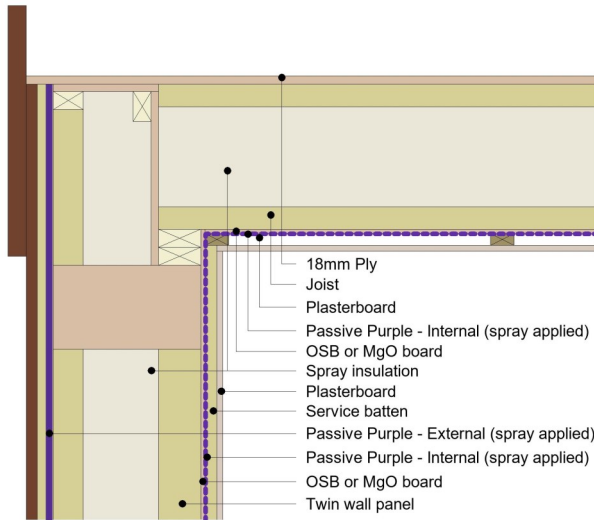
Plaster or plasterboard adhesive will adhere to Passive Purple in the same manner as if sticking directly to block, brick or concrete.





1 Timber frame - I beam detail  
 DET 11 1 : 10



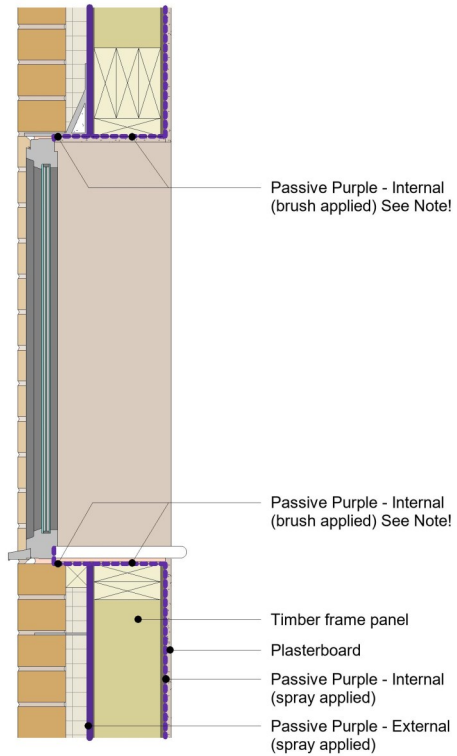


1 Passivhaus - Flat roof detail  
 DET 12 1 : 10



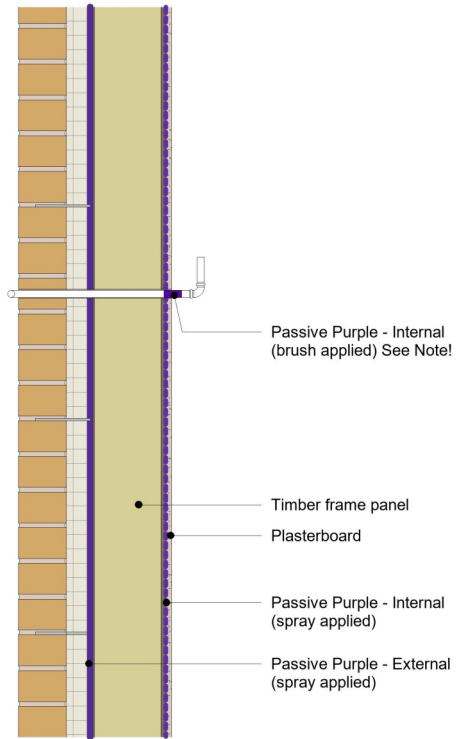
Note:

Passive Purple - Internal (brush applied) to be painted around the window ensuring PP covers the reveal, foam and the window. Make sure you apply PP to areas hidden by the plasterboard only.

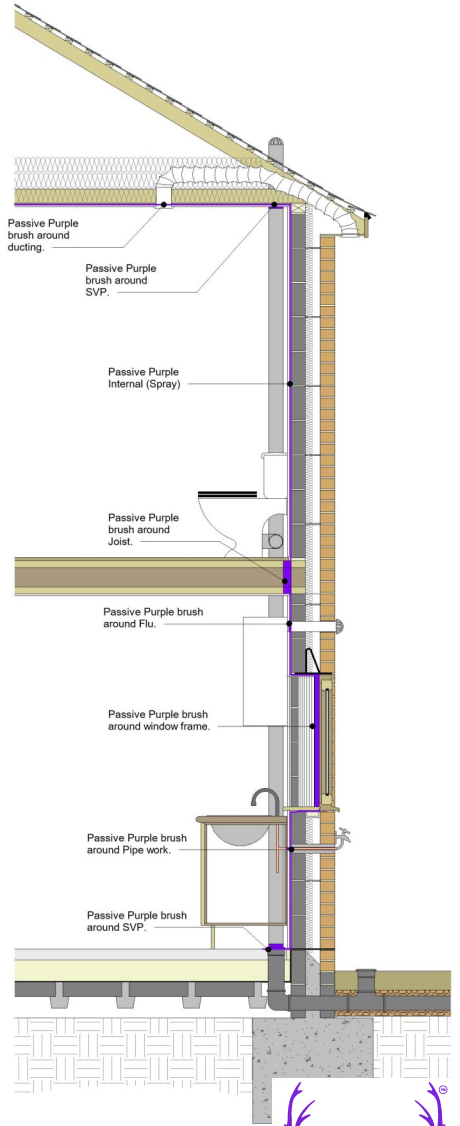
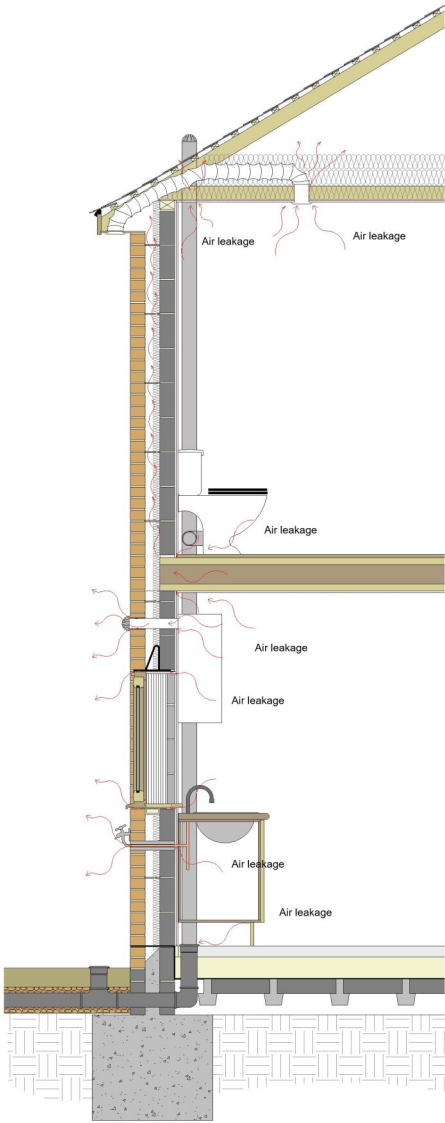


Note:

Passive Purple - Internal (brush applied) to be painted around any services that breach external walls.

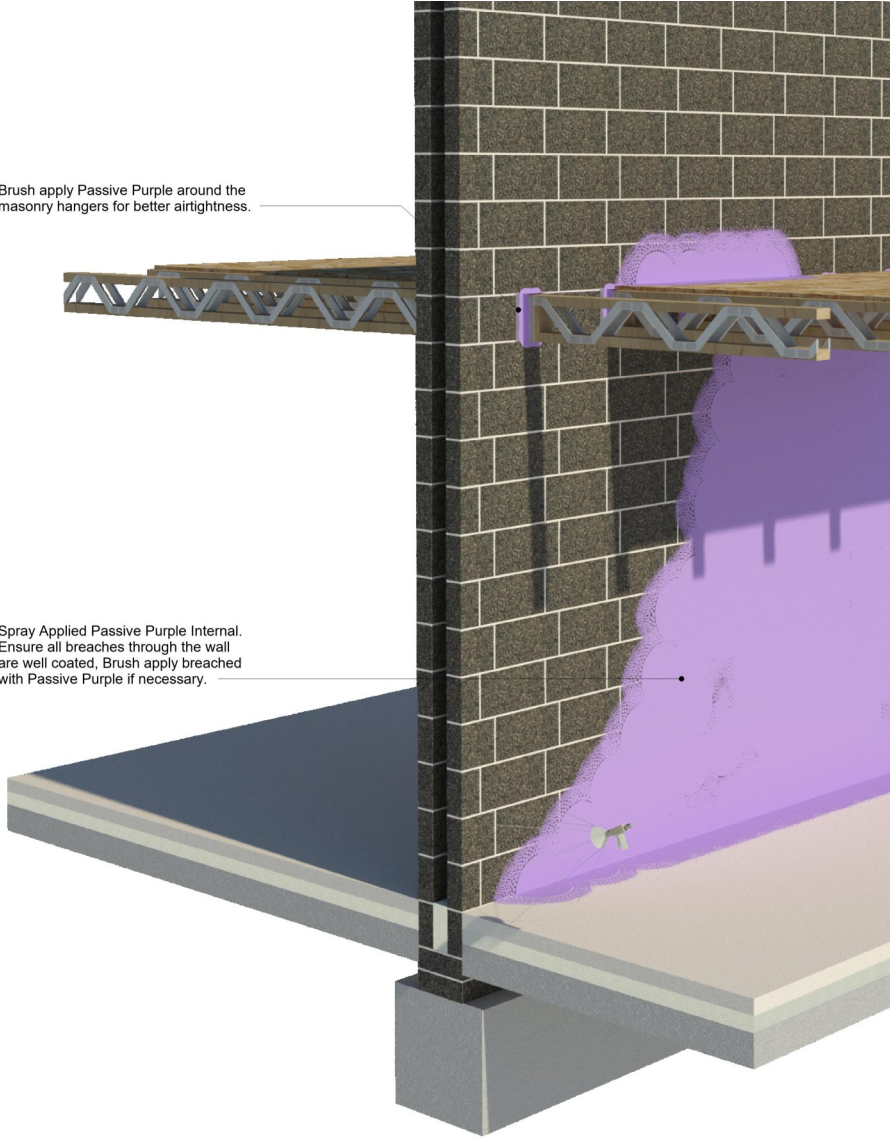






Brush apply Passive Purple around the masonry hangers for better airtightness.

Spray Applied Passive Purple Internal. Ensure all breaches through the wall are well coated, Brush apply breached with Passive Purple if necessary.





## **Passive Purple Airtight Vapour Control Membrane KEY POINTS:**

- PASSIVHAUS CERTIFIED**
- BBA CERTIFIED**
- M1 CLASS, VOC FREE (volatile organic compound)**
- RADON BARRIER**
- FIRE CLASS C**
- Upto 300m<sup>2</sup> a day per operative**
- 0.3ach (air changes per hour) or under easily achievable**
- Adheres to any substrate**

**To get in touch visit;**

**[www.passivepurple.co.uk](http://www.passivepurple.co.uk)**

**[info@passivepurple.co.uk](mailto:info@passivepurple.co.uk)**

**01223 208174**

**Clopton Manor, Lower Road, Croydon, Cambridgeshire  
SG8 0EF, United Kingdom**

**[www.intelligentmembranes.co.uk](http://www.intelligentmembranes.co.uk)**

