



INSTALLATION GUIDE

WATERPROOF BLUE/WHITE LIQUID DPM
BRUSH® | 2025/26



1. Area of use:

Waterproof Blue/White Brush® dries to form a flexible high crack bridging solution for concrete and cement-based surfaces of the following building parts:

- Showers
- Bathrooms
- Steam/wet rooms
- Areas that need waterproofing before tiling

2. System:

Waterproof Blue/White Brush® dries to a flexible vapour closed membrane with high crack-bridging properties. Waterproof Blue/White® is a polymer-based coating applied with a roller, or paintbrush for the waterproofing of concrete and cement-based surfaces in showers, bathrooms, steam areas, and wet rooms that need waterproofing prior to tiling with no corner reinforcements needed.



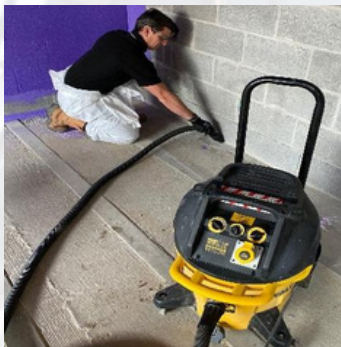
Kicker block



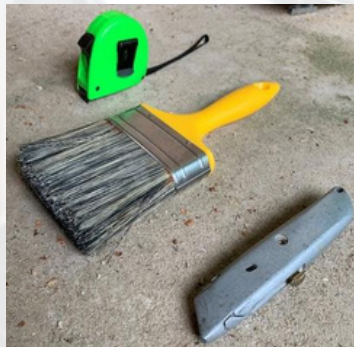
Concrete window sill

3. Materials and tools commonly used:

- Stanley Knife, bag for waste.
- Masking tape.
- Vacuum cleaner (also for removing standing water).
- Empty buckets, water for cleaning of tools.
- Handheld paddle mixer.
- Long haired roller
- Products: Waterproof Blue/White® Brush, 3" paintbrush.
- Surface temperature meter, substrate must not be below 5°C.
- Personal safety equipment: Safety glasses, gloves, helmet, overalls, and masks.



Clean all areas



Tools you will need



Waterproof Blue Liquid DPM
(Also available in White)

4. Individual protection:

Consult the Materials Safety Data Sheet prior to application. Always work in well-ventilated areas. Avoid direct skin contact when product is in wet conditions. You are advised to wear eye protection, overalls, mouth mask, gloves, and safety wear during application.



Gloves



Face fit mask



Goggles

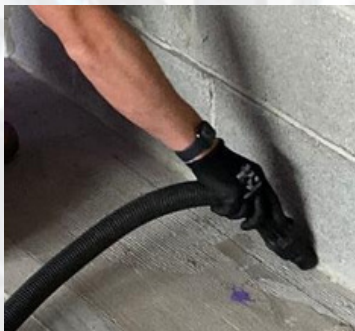


Protective suit

5. Inspection and preparation:

While Waterproof Blue/White Brush® is applied rapidly the successful sealing depends on thorough preparation of the substrate. The following preparation instructions need to be followed.

- Standing water, dust and free particles are removed with the vacuum cleaner. Waterproof Blue/white Brush® may be applied to humid surfaces.
- The ambient and substrate surface temperature must be above 5°C.
- Fill holes and gaps bigger than 2mm Waterproof Blue/White Brush® or if larger above 7mm occur, then treat with foam or mortar. When using polyurethane foam, cut off excess after hardening.
- For joints where movements are expected during the lifetime of the construction, apply Waterproof Blue/White Brush® over the joint which will then later be overcoated with Waterproof Blue/White®.
- Apply Waterproof Blue/White Brush® to connections such as between the wall and damp course or joints and penetrations on the OSB/MGO or blockwork.



Clean all areas



Applied to kicker block

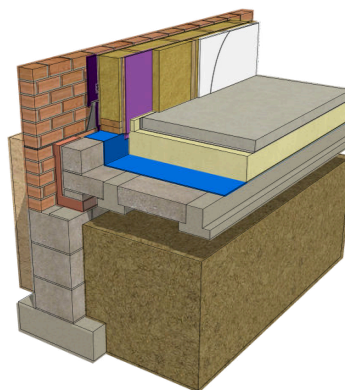
6. Application:

- Open the tub of Waterproof Blue/White Brush® and mix for a smooth consistency with a handheld paddle mixer at low speed, do not add water or solvents.
- For connections, fill the joints between the surface, the draining, and tubes, with a paintable waterproof sealant. When these joints are below 5mm, enlarge these before applying the sealant.
- Apply Waterproof blue/White Brush® with a paint brush. Coverage in 2 layers is minimal.
- Suitable tiling glues, cement glue class C2 or dispersion glue class D2TE, according EN12004.
- Protect Waterproof Blue/White Brush® against damages until tiling is applied. Ensure ventilation in case of high humidity.
- During the drying process typically allow 24-48 hours to fully dry. (Weather dependant)

- During the drying process typically allow 24-48 hours to fully dry. (Weather dependant)
- Lap onto adjoining areas.



Kicker block



Timber frame wall. Block and beam flooring

7. Joining with other airtightness systems:

- If an area to be sealed with Waterproof Blue/White Brush® needs to be joined with another membrane, make sure that it's sealed according to the membrane system manufacturer's specifications, so there is no gap on the sides of the membrane onto which Waterproof Blue/White Brush® will be painted.
- In case of doubt, consult the technical department of Intelligent Membranes®
- If an area to be sealed with Waterproof Blue/White Brush® needs to be joined with another area where airtightness is achieved with engineered wooden boards with taped seams, any gap between the two areas needs to be treated as outlined in paragraph 4. If the joint is made between concrete or masonry structures and wooden framed walls or roofs that are subject to shrinking and other movements butyl tape should be provided before final application of Waterproof Blue/White Brush®.

8. Donts:

- Do not apply Waterproof Blue/White® on a polluted or dusty substrate.
- Do not apply Waterproof Blue/White® on bitumen or asphalt-containing surfaces, or on surfaces with continuous water contact or water pressure to cover moving cracks.
- Do not dilute Waterproof Blue/White® with water or solvents; avoid contact with any type of liquid during drying. Do not leave the lid off the container for long periods, please re-seal immediately after use.
- Do not use a heat source at close range to aid drying.
- Avoid any contact with water or other liquids during the drying phase of Waterproof Blue/White®.
- In case of damage to the Waterproof Blue/White® coating after drying, simply restore by cleaning the surface of the coating and re-applying an extra layer which is easily done with the brush version if it gets damaged when drying.

9. Storage:

- Store all containers in a dry, frost-free environment between 5 and 35, avoid direct sunlight or contact with a heat source.
- Seal part used containers by pushing down firmly in the centre of the lid when closing to expel air, ensure lid is closed tightly.
- Do not use product from damaged or broken containers.
- Shelf life: product will keep for 24 months from the date of manufacture if kept according to these instructions in unopened containers. See batch number for date of production: ddmmyxx (dd:day/mm:month/yy:year/xx:product code)

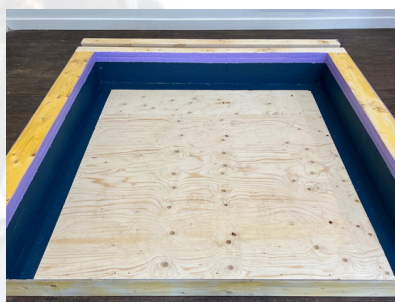
10. Disposal:

- Please refer to product SDS information. Please recycle all used tubs.

11. Areas of use:



Kicker block.



Timber frame, kicker block and sole plate.



Kicker block.

Precautions:

Consult the Materials Safety Data Sheet and the material compatibility sheet prior to application. Always work in well-ventilated areas. Avoid direct skin contact when product is in wet condition. You are advised to wear eye protection, face mask, gloves, and safety wear during application.

Further advice:

This advice is based on the experience of the Intelligent Membranes® for further information, please contact our head office. Product sheets, safety data sheets and independent test reports are available on request.

Intelligent Membranes®

United Kingdom

Clopton Farm

Croydon

Cambridgeshire

SG8 0EF

INFO@INTELLIGENTMEMBRANES.CO.UK

WWW.INTELLIGENTMEMBRANES.COM

UK (+44) 01223 208174

Canada +1 (613) 927 1011

USA +1 (347) 220 8403



#NETZERO

